



# Online Sessions for UCC Research Staff

25 April 2025

Presentation on different career paths for researchers  
by Dr Charlotte May



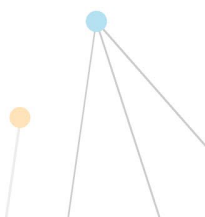
Rialtas na hÉireann  
Government of Ireland



Arna chomhchistiú ag  
an Aontas Eorpach  
Co-funded by the  
European Union



Tionól Réigiúnach  
Tuaiscirt & Iarthair  
Northern & Western  
Regional Assembly





# Overview

- Who am I ?
- Where do I work?
- What is my role?
- What positions did I have leading up to my current role?
- What is my research background?
- Public Sector/ Local Government?
- What can a research/PhD background bring to other positions?
- What advice for PhD and research students starting out?
- Websites



Rialtas na hÉireann  
Government of Ireland



Arna chomhchistiú ag  
an Aontas Eorpach  
Co-funded by the  
European Union



Tionól Réigiúnach  
Tuaiscirt & Iarthair  
Northern & Western  
Regional Assembly



# Who am I?

- Dr Charlotte May
- Biography
- EU Programme Executive



Rialtas na hÉireann  
Government of Ireland



Arna chomhchistiú ag  
an Aontas Eorpach  
Co-funded by the  
European Union



Tionól Réigiúnach  
Tuaiscirt & Iarthair  
Northern & Western  
Regional Assembly

# Where do I work?

- Northern and Western Regional Assembly
- 3 Regions
- responsible for co-ordinating and promoting strategic planning and sustainable development in their region



Rialtas na hÉireann  
Government of Ireland



Arna chomhchistiú ag  
an Aontas Eorpach  
Co-funded by the  
European Union



Tionól Réigiúnach  
Tuaiscirt & Iarthair  
Northern & Western  
Regional Assembly

# Where do I work?



Rialtas na hÉireann  
Government of Ireland

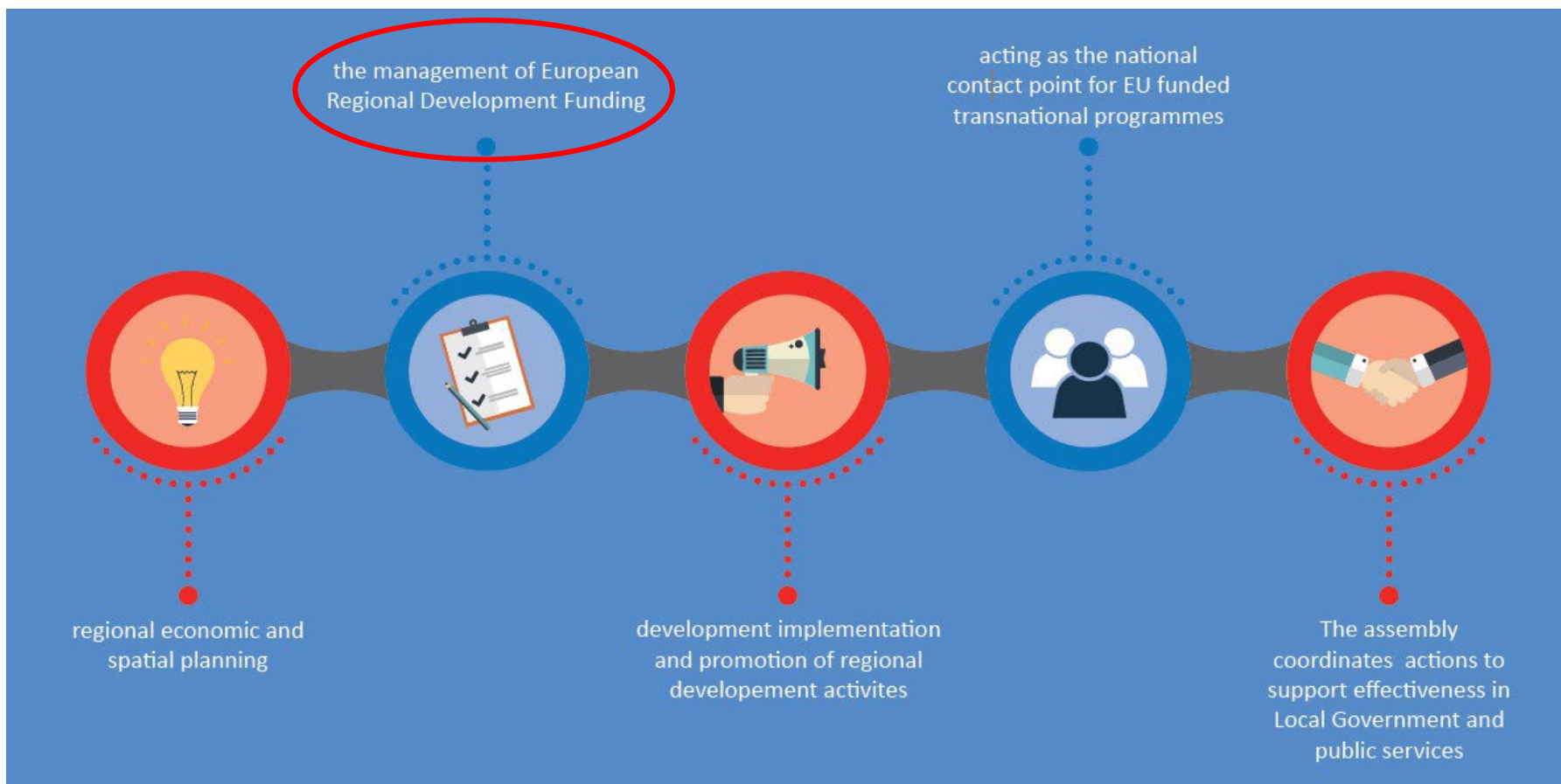


Arna chomhchistiú ag  
an Aontas Eorpach  
Co-funded by the  
European Union



Tionól Réigiúnach  
Tuaiscirt & Iarthair  
Northern & Western  
Regional Assembly

# Regional Assemblies?



Rialtas na hÉireann  
Government of Ireland



Arna chomhchistiú ag  
an Aontas Eorpach  
Co-funded by the  
European Union



Tionól Réigiúnach  
An Tuaiscirt & An Iarthair  
Northern & Western  
Regional Assembly



Tionól Réigiúnach  
an Deiscirt  
Southern Regional  
Assembly



Rialtas na hÉireann  
Government of Ireland



Arna chomhchistiú ag  
an Aontas Eorpach  
Co-funded by the  
European Union



Tionól Réigiúnach  
Tuaiscirt & Iarthair  
Northern & Western  
Regional Assembly



# • Programme Design

- European Semester - Country Specific Report
- RSES
- Needs Analysis
- Regional Innovation Scoreboard
- Smart Specialization Strategy
- Regional Enterprise Plans
- AIRO

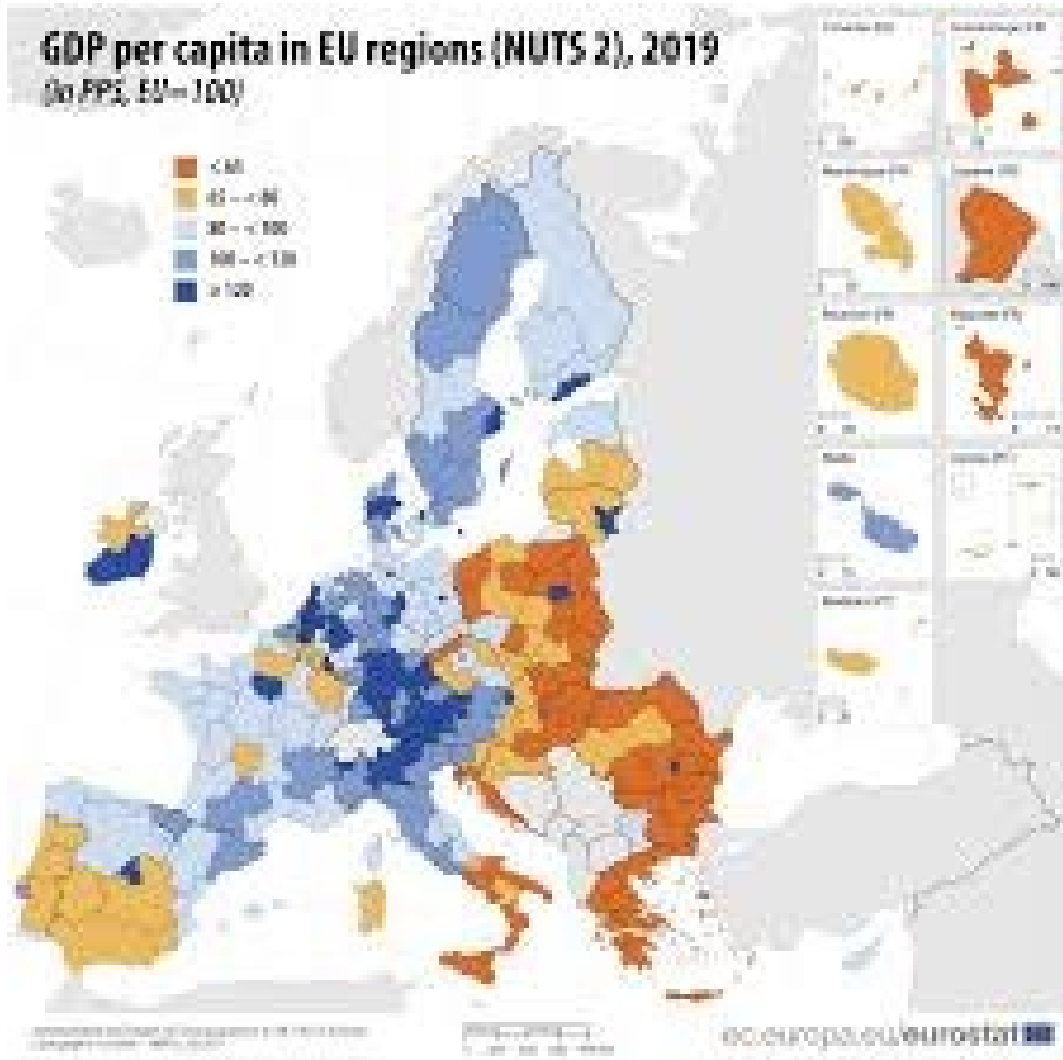


# Where do I work?

- Economic and Spatial Planning
- EU funding







Rialtas na hÉireann  
Government of Ireland

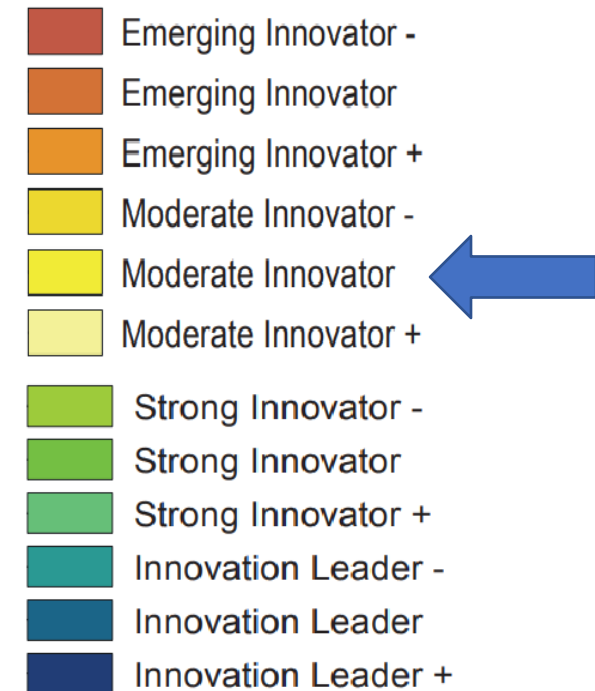
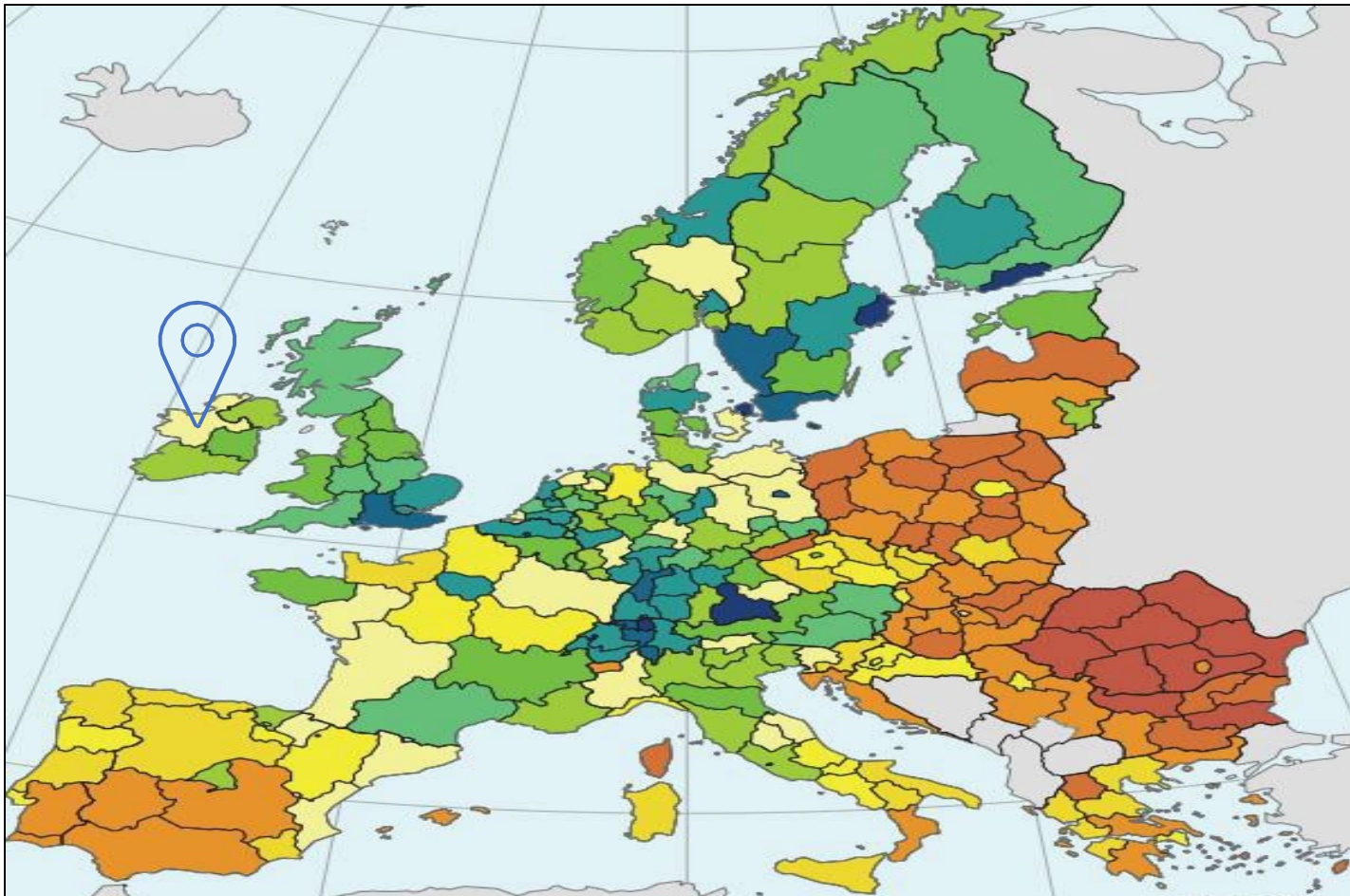


Arna chomhchistiú ag  
an Aontas Eorpach  
Co-funded by the  
European Union



Tionól Réigiúnach  
Tuaiscirt & Iarthair  
Northern & Western  
Regional Assembly

# EU Regional Innovation Scoreboard 2021



- **Moderate Innovator** is a region with innovation index score between 70% - 100% of EU average
- Strong Innovator is a region with innovation index score between 100% - 125% of EU average

Source: European Commission

- ERDF: three different categories of regions

## NWRA Region in Transition

| Region Classification  | ERDF Co-financing Rate |
|------------------------|------------------------|
| More-developed regions | 40%                    |
| Region in Transition   | 60%                    |
| Less-developed regions | 85%                    |



# ERDF Regional Programmes in Ireland

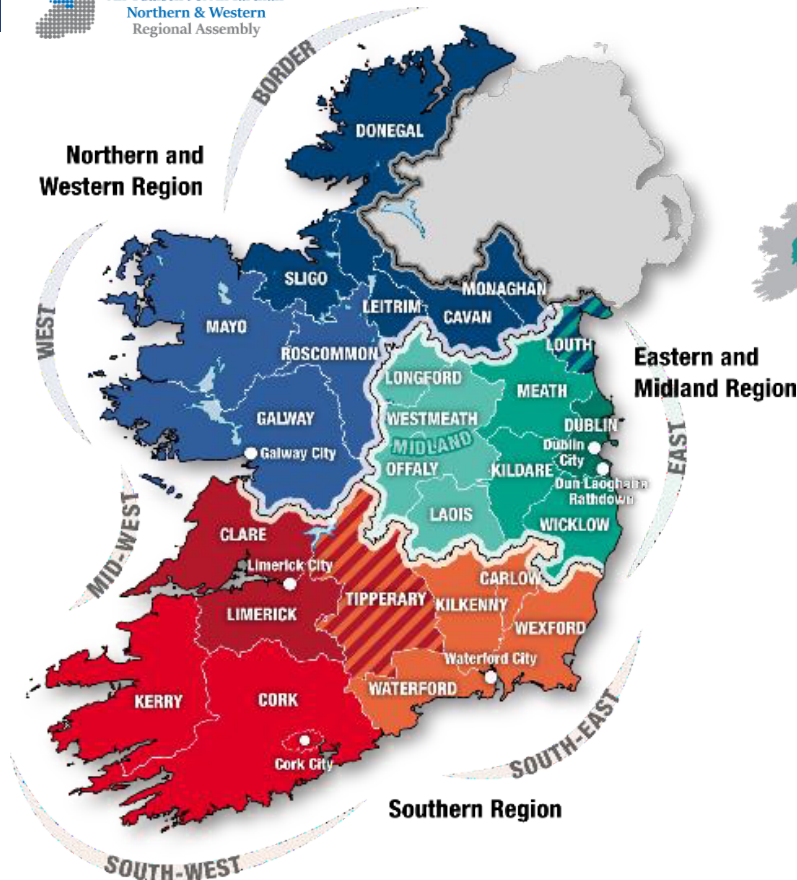
## Northern & Western Regional Programme 2021-27

€217m

Region in Transition

60% ERDF co-financing rate

Managing Authority = Northern & Western Regional Assembly



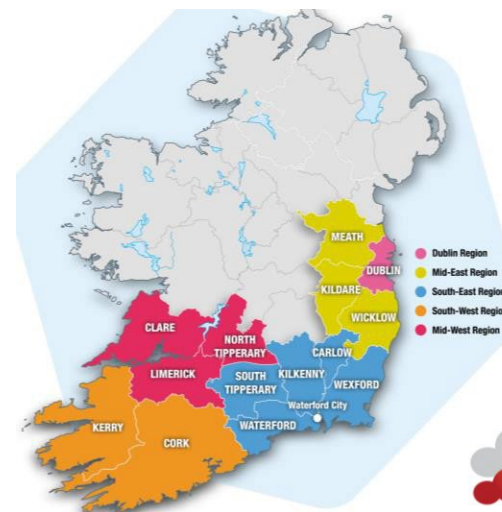
## Southern, Eastern & Midland Regional Programme 2021-27

€663m

More Developed Regions

40% ERDF co-financing rate

Managing Authority = Southern Regional Assembly



Rialtas na hÉireann  
Government of Ireland



Arna chomhchistiú ag  
an Aontas Eorpach  
Co-funded by the  
European Union



Tionól Réigiúnach  
An Tuaiscirt & An Iarthair  
Northern & Western  
Regional Assembly



Tionól Réigiúnach  
an Deiscirt  
Southern Regional  
Assembly

# ERDF Programme Priorities



## Priority 1 – “Smart Europe”

6 schemes focusing on innovation,  
research and entrepreneurship =  
€108m



## Priority 2 – “Greener Europe”

1 scheme - Warmer Homes (SEAI)  
funding retrofit of homes for people  
in energy poverty = €65m



## Priority 3 – “A Europe closer to citizens”

1 scheme – THRIVE, focused on  
sustainable urban development,  
= €30.7m



Rialtas na hÉireann  
Government of Ireland



Arna chomhchistiú ag  
an Aontas Eorpach  
Co-funded by the  
European Union



Tionól Réigiúnach  
An Tuaiscirt & An Iarthair  
Northern & Western  
Regional Assembly

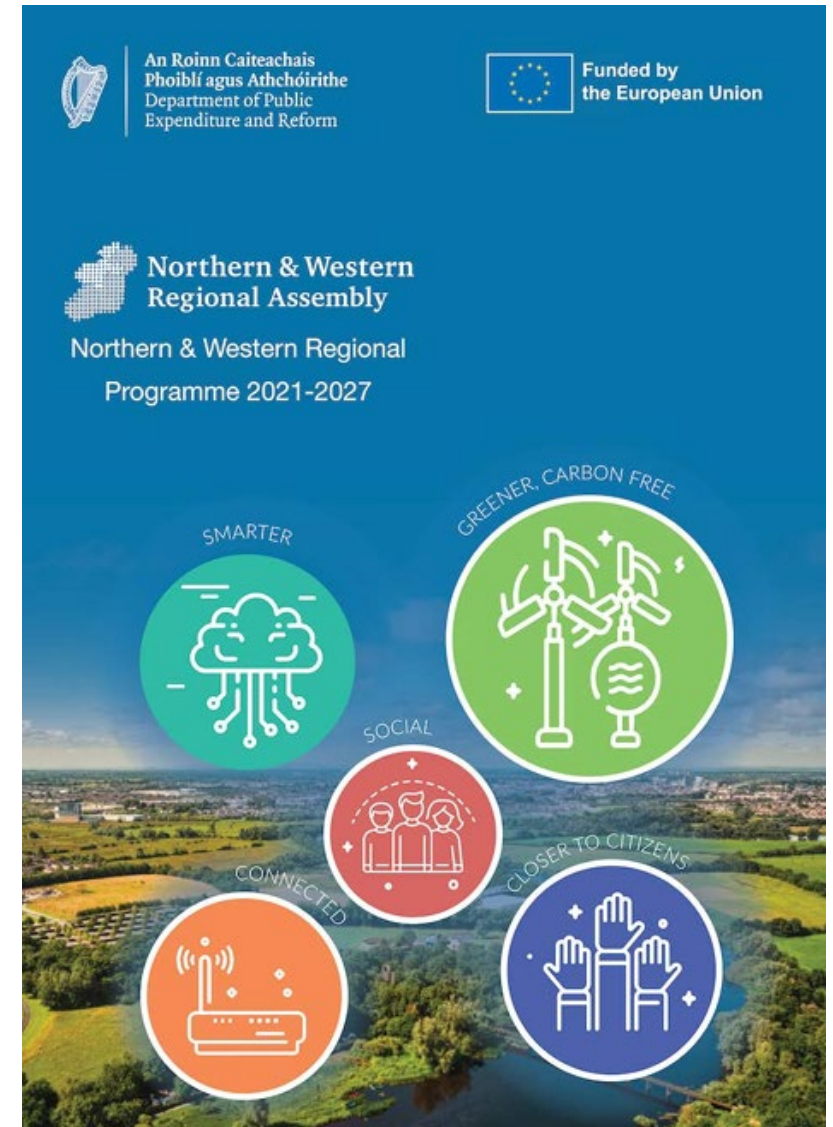


Tionól Réigiúnach  
an Deiscirt  
Southern Regional  
Assembly



# What is my role?

- EU Programme Executive
- SEAI Warmer Homes Scheme
- Phd Skills I apply



Rialtas na hÉireann  
Government of Ireland



Arna chomhchistiú ag  
an Aontas Eorpach  
Co-funded by the  
European Union



Tionól Réigiúnach  
Tuaiscirt & Iarthair  
Northern & Western  
Regional Assembly

# Regional Programme 2021-2027 Outcomes



Developing a smarter more competitive region through measures like building Research, Development and Innovation (RD&I) capacity in public research institutions and by strengthening regional innovation systems in line with Ireland's Smart Specialisation Strategy and the Regional Enterprise Plans.



Supporting actions to scale up energy efficiency measures for those in energy poverty.



Supporting the sustainable regeneration of towns and urban centres.

# • What Positions did I have prior?

- EU Trainee
- [APPLY HERE](#)



2

sessions a year



+/- 1,000

traineeship positions  
available per session



1,418.20€

grant



Rialtas na hÉireann  
Government of Ireland



Arna chomhchistiú ag  
an Aontas Eorpach  
Co-funded by the  
European Union

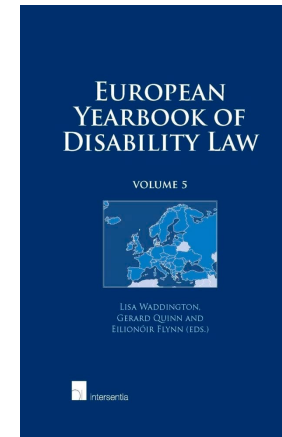


Tionól Réigiúnach  
Tuaiscirt & Iarthair  
Northern & Western  
Regional Assembly

# What Positions did I have prior?

## What is my research background?

- European Disability Forum
- Centre for Disability Law and Policy (UoG)
- Galway County Council



OLLSCOIL NA GAILLIMHE  
UNIVERSITY OF GALWAY

An tIonad Dlí & Beartais Míchumais  
Centre for Disability Law & Policy



Comhairle Chontae na Gaillimhe  
Galway County Council



Rialtas na hÉireann  
Government of Ireland



Arna chomhchistiú ag  
an Aontas Eorpach  
Co-funded by the  
European Union



Tionól Réigiúnach  
Tuaiscirt & Iarthair  
Northern & Western  
Regional Assembly



# Working in Public Sector/ Local & Regional Government

- Different type of employer
- Different appraisal system
- Decision -making
- Different Work-Life balance



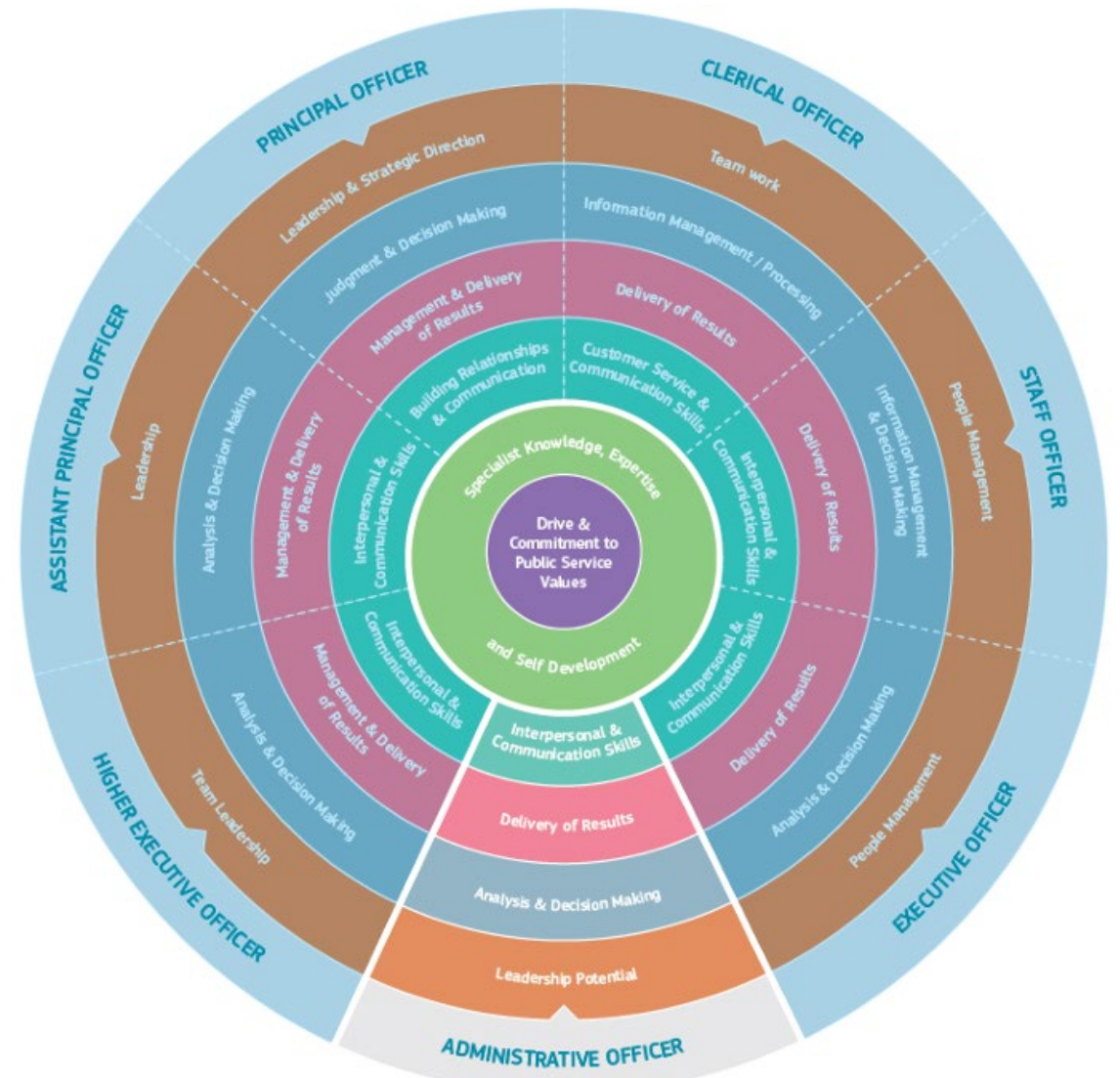
# What can a research/PhD bring to other roles?

- Research is universal
- Time management
- Fund management
- Project management

| PhD task or activity  | Skills/competency   |
|---|---|
| I wrote a 300-page long monograph.  | Ability to present and organise large amounts of information in a clear manner.<br>Fluency in Microsoft Office packages.  |
| I had 3 supervisors, or my supervisors didn't get on.   | Negotiation skills.   |
| I analysed loads of data.   | Analysis of complex data and presentation of emerging conclusions and concepts.   |
| I conducted interviews for my research project.   | Questionnaire design (if applicable).<br>Experience in qualitative and/or quantitative analysis.<br>Sensitive to the needs of others.<br>Diplomacy and confidentiality. |
| Theory testing didn't work but I found out why and tried again.   | Problem-solving skills.   |
| I published papers, book chapters and presented at conferences.   | Ability to communicate complex ideas effectively in a range of formats.   |
| I completed my PhD in three years.  | Ability to plan a project and deliver it to agreed timelines.   |
| I did a PhD.  | <u>I am able to</u> work with minimum supervision as well as part of a team.  |
| I organised a conference.   | Event planning skills.  |
| My research group was international, or I spent some time abroad for my research.   | Ability to interact with colleagues from diverse professional backgrounds to successfully work towards common goals.  |
| I took part in science communication or public engagement events such as science festivals, visiting schools to explain your research, etc. | Ability to communicate effectively to a range of audiences.   |
| I was in charge of a piece of equipment or I set up a research seminar series.  | Initiative and self-reliance.   |

# What advice for PhD and research students starting out?

- Excel
- Network
- Work experience
- Competency Based Interviews





# Websites

- [Local Authority Graduate Programme](#)
- Publicjobs.ie



Rialtas na hÉireann  
Government of Ireland



Arna chomhchistiú ag  
an Aontas Eorpach  
Co-funded by the  
European Union



Tionól Réigiúnach  
Tuaiscirt & Iarthair  
Northern & Western  
Regional Assembly





# Thank you!

Any Qs?