

# ISS21 news



## IN THIS ISSUE

## Welcome from ISS21 Director



Welcome to this, the second edition of the ISS21 newsletter. 2018 was a busy and exciting year for the Institute, which included the start-up of new research projects and collaborations, the development and reinvigoration of ISS21 research clusters, and new research staff in the Institute, including a Fulbright scholar, Dr. Beth Sundstrom.

The Institute is delighted to be hosting or co-hosting nine substantive research projects, having secured €1.5 million of new national and international research funding in 2018. New projects include multi-partner Horizon 2020 consortia in the areas of responsible research and innovation (RRING, hosted jointly with

MaREI), and the integration of migrant children in schools (IMMERSE, jointly hosted with the School of Applied Social Studies). Funding has also been received from the Wellcome Trust, the Irish Human Rights and Equality Commission, and Treoir, and we are delighted that we have also been joined by a Marie Skłodowska-Curie Fellow, Dr. Monica O'Mullane. Monica's research will continue the Institute's significant track record in research exploring gender equality in higher education.

In addition to a busy programme of events, workshops and Masterclasses, and the further development of ISS21's interdisciplinary research clusters, 2018 was also a year for planning the future direction and priorities of the Institute. Through a process of consultation with research cluster conveners and Board members, we are nearing completion of the Institute's five year strategic plan. We look forward to the launch of this later in 2019, and sharing our ambition to be a leading research Institute for imaginative, interdisciplinary and impactful social science.

*Dr. Claire Edwards*

## ISS21 Events

It has been a busy year for events, including seminars with invited speakers, cluster seminar series, and a Masterclass.



Page 2-3

## Our research projects

The institute currently hosts/co-hosts nine nationally and internationally funded research projects. Find out more about our projects on page 4.

Page 4

## Fulbright Scholar & MSCA Fellow

ISS21 welcomed two new scholars this year, Dr Beth Sundstrom and Dr Monica O'Mullane from September 2018. Find out more about their research.

Page 5

<https://www.ucc.ie/en/iss21/>

# Selected ISS21 events

## BEYOND TRAFFICKING: REFLECTIONS ON RESEARCH WITH CHILD AND YOUTH MIGRANTS

On 24 April 2018, the ISS21 Migration and Integration Research Cluster hosted a seminar with visiting academic, Dr. Roy Huijsmans of the International Institute for Social Studies at Erasmus University, Rotterdam. Dr Huijsmans presented the findings of his research with child and youth migrants in the



*Dr Shirley Martin (UCC), Dr Roy Huijsmans (Erasmus University) and Dr Cairiona Ni Laoire (UCC) at the Beyond Trafficking seminar.*

majority world. This was followed by a roundtable discussion, chaired by Angela Veale, in which ISS21 members discussed their own research in the field of migration and considered future directions.

## RESEARCHING CHILDREN'S LIVES IN A DIGITAL AGE

On 5 September 2018, the ISS21 Children and Young People Research Cluster hosted a seminar with visiting speaker, Dr. Liam Berriman, Lecturer in Childhood and Youth Studies at the University of Sussex, UK. This seminar reflected on the methodological and ethical issues that arise in researching children's digital lives. Drawing on findings from a recent qualitative longitudinal study ('Everyday Childhoods'), the seminar also looked at how public debate about children's digital lives has been politicised.



*Researching Children's Lives in a Digital Age seminar, with Dr Liam Berriman.*

## NEW PERSPECTIVES ON YOUTH POLITICAL PARTICIPATION

The ISS21 Civil Society cluster hosted a seminar on 'New Perspectives on Young People's Political Participation' on the 23<sup>rd</sup> February 2018. Dr Nathan Manning (University of York), Dr Emily Rainsford (Newcastle University) and Rebecca Jeffers (UCC) presented papers based on their research on different aspects of



*Dr Nathan Manning (University of York), Dr Emily Rainsford (Newcastle University), Dr Catherine Forde and Rebecca Jeffers (UCC) at the Youth Political Participation seminar.*

youth participation.

Following the presentations, Dr. Theresa Reidy chaired a roundtable discussion with James Doorley (National Youth Council of Ireland), Donnchadh O'Laoghaire TD (Sinn Féin), Laura Harmon (National Women's Council of Ireland) and Thomas Atcha (UCC). Young people from three local schools attended the event and made a valuable contribution to the discussion on youth participation.

## THE BUMPY ROAD TOWARDS THE IRISH SIGN LANGUAGE ACT

Dr John Bosco Conama (Centre for Deaf Studies, Trinity College Dublin) charted the progress of the Irish Sign Language recognition campaign and explored some critical considerations for language rights activism in an event hosted by the ISS21 Disability and Mental Health Cluster. The event was held in conjunction with UCC's Equality, Diversity and Inclusion Unit, as part of UCC Equality Week, March 6th - 9th 2018.

## MAXIMISING THE POTENTIAL OF CARER RESEARCH

On June 19 the ISS21 Caring Working Group and Care Alliance Ireland hosted a half-day seminar. Guest speaker Dr. Mary Larkin (Open University, UK) discussed international developments in family care research and the launch of the Carer-related Research Evidence Exchange Network.

## SPACES FOR CHANGE? COMMUNITY PARTICIPATION IN LOCAL GOVERNANCE

On the 29th November 2018, the ISS21 Civil Society Cluster hosted a seminar on the practice and policy of community participation in local governance in Ireland. Speakers at the event included: Dr Mary Murphy, NUI, Maynooth; Dr Aodh Quinlivan, Department of Government, UCC; Aiden Lloyd, Chair of the Rights Platform and member of South Dublin PPN Secretariat and LCDC; and Dr Catherine Forde, School of Applied Social Studies, UCC. Presentations were followed by a panel discussion and a Q&A session with members of the audience.



*Dr Mary Murphy (NUI Maynooth) addresses the 'Spaces for Change?' seminar.*



## Research Clusters

2018 has been a busy year for the ISS21 research clusters. Cluster members organised a number of well-attended seminars with invited speakers from Ireland, the UK and the Netherlands (see p.2). In addition, the Migration and Integration and the Children and Young People clusters each ran a comprehensive internal seminar series, titles from which are listed opposite.

During March and April events were held to mark the relaunch of two research Clusters: Society, Health and Political Economy (SHAPE); and Poverties, Social Justice and Inequalities. At the SHAPE relaunch, cluster members from across different disciplines presented short papers on a range of topics, including the origins and implementation of tobacco controls, the impact of health inequalities, changing constructions of disability, and health expenditure in Ireland. At the second relaunch, Dr. Karl Kitching, Director of Equality, Diversity and Inclusion, presented a thought-provoking paper on widening participation in higher education.

In November, the Department of Theatre, in collaboration with the ISS21 Disability and Mental Health Research Cluster, ran a masterclass on 'Performative Practices: theatre, disability and the arts'.

### Research Cluster Seminars 2018

**'A pan-European perspective on intra-EU youth migration'**, Dr. Piaras MacÉinrí (Department of Geography) and Dr. Orla McGarry (ISS21) 23 January.

**'The cultural representation of second-generation Chinese-Italians in Italy'**, Chiara Giuliani (Department of Italian) 6 February.

**'A rights-based approach to cyberbullying research'**, Rebecca Dennehy (School of Public Health) 16 February.

**'Children and asylum seeking – current and emerging research'**, Jessica Brennan (School of Law) and Dr Shirley Martin (Applied Social Studies) 21 February. Jointly hosted with the Centre for Criminal Justice & Human Rights.

**'Professional integration of non-EU migrant doctors in Ireland: credentialism as nemesis'**, Dr. Olaniyi Kolawole (Applied Social Studies) 14 March.

**'Human rights in children's spaces'**, Dr. Jonathan Todres, (Fulbright Scholar, School of Law) 20 March.

**'Solidarity and young people in Medellín (Colombia)'**, Yicel Nayrobis Giraldo Giraldo (Visiting Scholar), 2 May.

**'Break the Binary' - trans\* youth in the city'**, Dr. Fiachra O' Suilleabháin (School of Applied Social Studies) 1 June.

**'Naming and addressing campus based sexual harassment and violence "it's your place"'** Dr. Beth Sundstrom (ISS21) 29 November. Jointly hosted by the ISS21 Genders, Sexualities and Families Cluster with the CASiLaC Violence, Conflict and Gender Cluster.

**'Belongings, borders and otherness: Brexit and the common travel area'** Dr. Piaras Mac Éinrí (Department of Geography) 12 December.

### ISS21 hosts Masterclass on 'Researching Intimate Lives'

On 16th November, the Institute hosted a one-day Masterclass on the theme of 'Researching Intimate Lives'. Hosted as part of a graduate Masterclass module aimed at staff, researchers and postgraduate students, the class sought to explore some of the methodological, political and ethical issues that arise in conducting research on intimate lives, in which the boundary between the public and private is frequently porous, and increasingly blurred. ISS21 Fulbright Scholar, Dr. Beth Sundstrom kicked off the event with a public evening lecture exploring her work on reproductive justice activism, and the potential of social media as a research tool for collating women's health stories as part of building activist agendas. This was followed by an interdisciplinary line-up of speakers, from Applied Psychology, Applied Social Studies, and Art and Creative Practice who drew on their diverse research experiences to explore different ethical and methodological issues that can arise from researching intimate aspects of people's lives, whether through documentary methods, face-to-face interviews, participant observation, or indeed through works of art. The day concluded with a panel discussion with discussants Mary Donnelly (Law), Nuala Finnegan (School of Languages, Literatures and Cultures) and Nollaig Frost (Applied Psychology), and was an inspiring and thought-provoking opportunity to share methodological approaches and reflect on some of the often unanswered ethical questions raised in researching intimacy and private lives.

# ISS21 Research Projects

ISS21 currently hosts/co-hosts nine research projects, funded through national and international sources. The projects cover a diverse range of issues including: responsible research and innovation, 'living well with the dead', exploring people with disabilities' everyday geographies of unsafety in the context of fear of hostility, and caring for family members with dementia. We are delighted to announce that a new multi-partner Horizon 2020 project, on the integration of refugee and migrant children in schools (IMMERSE), commenced in December 2018. Two earlier Horizon projects – Y-Mobility and ENTRUST – were completed in 2018.

## Our funders



Coimisiún na hÉireann um Chearta an Duine agus Combhionannas  
Irish Human Rights and Equality Commission



IRISH RESEARCH COUNCIL  
An Chomhairle um Thaighde in Éirinn



## ISS21 Current Projects

**Disability & the Creation of Safe(r) Space** (2017-19). Claire Edwards (PI) **Funder:** IRC. Jointly hosted with Applied Social Studies (ASS).

**Evidence-based Research for Policy and Society: A Critical Evaluation of the Implications of Participatory Governance for Civic Engagement and the State** (2017-19). Catherine Forde (PI). **Funder:** IRC. Jointly hosted with ASS.

**Socio-Economic Impact of Cork City Northwest Regeneration Programme, Phase 2** (2017-20). Cathal O'Connell & Siobhán O'Sullivan (PIs) **Funder:** Cork City Council. Jointly hosted with ASS.

**Responsible Research and Innovation Networked Globally** (RRING) (2018-21). **Funder:** Horizon 2020. Project hosted by MaREI with contribution by ISS21.

**Living Well with the Dead in Contemporary Ireland** (2018-19) Orla O'Donovan (PI) **Funder:** Wellcome Trust. Jointly hosted with Applied Social Studies.

**Caring for Family Members with Dementia: an Exploration of how Family Caregivers' Shifting Experiences of Family and Home Shape Family Consumption** (2018-19) Carol Kelleher (PI) **Funder:** Association of Consumer Research. Jointly hosted with Department of Management and Marketing.

**IMMERSE: Integration Mapping of Refugee and Migrant Children in Schools and other Experiential Environments in Europe** (2018-22) Shirley Martin (PI). **Funder:** Horizon 2020. Jointly hosted with Applied Social Studies.

**Developing a Deaf Awareness and Accessibility Auditing Template** (2018-19) Gill Harold (PI) **Funder:** Irish Human Rights and Equality Commission. Jointly hosted with Applied Social Studies.

**GendeResearchIreland** (2018-22) Dr Monica O'Mullane. **Funder:** Marie Skłodowska-Curie Individual Fellowship programme.

## Recently Completed

**Community Parks and Playgrounds: Intergenerational Participation through Universal Design** (2017-18). Helen Lynch (PI) **Funder:** National Disability Authority. Jointly hosted with Dept. of Occupational Science and Occupational Therapies.

**Unmarried Fathers and Shared Parenting** (2018) Elizabeth Kiely (PI) **Funder:** Treoir: The National Federation of Services for Unmarried Parents and their Children.

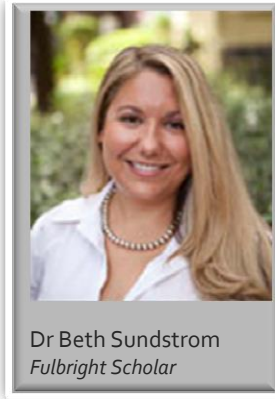
**Y-MOBILITY: Youth Mobility: Maximising Opportunities for Individuals, Labour Markets and Regions in Europe** (2015-18). Piaras Mac Éinrí (PI). **Funder:** Horizon 2020.

**ENTRUST: Energy System Transition Through Stakeholder Activation, Education and Skills Development** (2015-18). Niall Dunphy (Consortium Coordinator & PI). **Funder:** Horizon 2020. (Joint with Cleaner Production Promotion Unit, School of Engineering).

## ISS21 hosts Fulbright Scholar & MSCA Fellow

We were delighted to welcome Dr Beth Sundstrom who joined ISS21 as a Fulbright Scholar from September to December 2018, and Dr. Monica O'Mullane who joined ISS21 as a Research Fellow under the EC Marie Skłodowska-Curie (MSCA) Individual Fellowship programme, 2018-2022.

Dr Sundstrom is Associate Professor in the Department of Communication and Public Health in the College of Charleston, South Carolina and is a leading scholar on health communication, pregnancy and childbirth. While in UCC, Dr Sundstrom worked on a project entitled 'Horror and Hope: Reproductive Justice Activism in Ireland, Past and Present'. The project draws upon documentary analysis and interviews with activists to investigate the emerging reproductive justice movement in Ireland. Through a study of women's reproductive health, including contraception, pregnancy, and



Dr Beth Sundstrom  
Fulbright Scholar



Dr Monica O'Mullane  
MSCA Fellow

childbirth, the project explores the social/cultural, political, and economic context that contribute to inequities based on race/ethnicity, ability, class, and sexuality in contemporary Ireland.

Dr Monica O'Mullane will explore gender equality in Irish higher education through qualitative research on Athena SWAN, a gender equality programme which seeks to promote good practice in recruiting, retaining and promoting women in science and research. Based on qualitative case studies in three higher education institutions, the project seeks to understand the role, position and perception of Athena SWAN within Irish higher education. The research will look in particular at how Athena SWAN is being adopted and utilised in higher education, how institutions respond to the change process implied in the

initiative, and why the processes of Athena SWAN vary in different contexts. Monica will work with Dr Cairtriona Ní Laoire, who was the Irish PI on the multi-country FP7 funded GENOVATE (Transforming Organisational Culture for Gender Equality in Research and Innovation) project, in which Monica also participated, as scientific coordinator of the Slovak partner team. In December 2018 she presented a seminar on her experiences – 'Implementing a European gender equality project in a Slovak university: A personal perspective'.

Monica has had a long-standing interest in equality issues, stemming from her political and health studies (UCC and NUIG) before her work on the GENOVATE project. She will play an active role in the Institute's Genders, Sexualities and Families research cluster.



### ISS21 research having impact

Over the past year, ISS21 research has continued to have impacts within and beyond the academy. ISS21 researchers have been active in disseminating their research at national and international conferences; members of the 'Safe(r) Space' research team, for example, presented work from the project at conferences in the UK, Italy and Ireland, whilst ISS21 members from Occupational Sciences and Therapies presented their work on intergenerational access to community playgrounds to an audience of practitioners and academics at the international Universal Design and Higher Education in Transformation conference in Dublin. The report of this research will be formally launched at the National Disability Authority in Dublin in February 2019.

2018 also saw the publication of ISS21-hosted project findings, including the Treoir-funded project report *Unmarried Fathers in Ireland: An Examination of the Barriers to Shared Parenting* (E. Kiely and R. Bolton) which was launched in Dublin in December. The findings of the research were subsequently drawn on in a debate in the Dail (13 December) in relation to children and family services provision.

ISS21 members continue to forge linkages with numerous stakeholders, including local community groups, community and voluntary sector organisations, as well as government policy makers. Recent events hosted by the clusters have brought together diverse groups including schoolchildren, politicians and international academics on to the UCC campus. In terms of outreach, ISS21 also participated in the first Cork Discovers event held on 28 September.



## About ISS21

ISS21 seeks to develop, sustain and enhance excellent, impactful research on the social, economic and cultural issues shaping Ireland in the twenty first century. Researchers at ISS21 interrogate key societal challenges, dynamics, and interrelationships, by promoting collaborative, interdisciplinary research unified around the following thematic areas:

- Ageing
- Caring
- Children and Young People
- Civil Society
- Disability and Mental Health
- Educating for the Professions
- Genders, Sexualities and Families
- Migration and Integration
- Poverties, Social Justice and Inequalities
- Society, Health and Political Economy (SHAPE)

ISS21 seeks to build interdisciplinary social science research capacity and demonstrate the significance of the social sciences within and beyond the university. Engaged research is a cornerstone of the Institute's work, with significant relationships forged with community and voluntary sector organisations, local and central government policymakers and other public sector bodies. As a member of the Irish Social Sciences Platform (ISSP), the Institute contributes to national debates on the direction and impact of the social sciences in Ireland.

## Contact us

Dr. Claire Edwards (Director)  
claire.edwards@ucc.ie

Dr. Caitríona Ní Laoire (Deputy Director)  
c.nilaoire@ucc.ie

Dr. Margaret Scanlon (Research Coordinator)  
m.scanlon@ucc.ie

**ISS21, Carrigbawn/Safari,  
Donovan Road,  
University College Cork,  
IRELAND**  
[@ISS21UCC](https://www.ucc.ie/en/iss21)

