



Tralee Urban Fossil Trail

Ireland's Fossil Heritage has created a series of urban fossil trails that guide you to fossils in the buildings, paving stones and walls in several towns and cities across Ireland.

The Tralee urban fossil trail begins at the Train Station and finishes at the Holy Cross Priory on Godfrey Place.

Leave No Trace

We encourage all visitors to the outdoors, including fossil sites, to follow the principles of the Leave No Trace campaign. We strongly discourage hammering and removal of fresh rock samples! Many fossil sites, including sites in Ireland, have been irrevocably impacted by irresponsible fossil collection, resulting in the destruction and loss of our natural heritage. Instead "Leave What You Find" – aim to minimise your mark on the natural environment and leave the fossils there for the next visitor to enjoy.

Find Out More

You can learn more about the fossils found on this trail and other Irish fossils on our website:

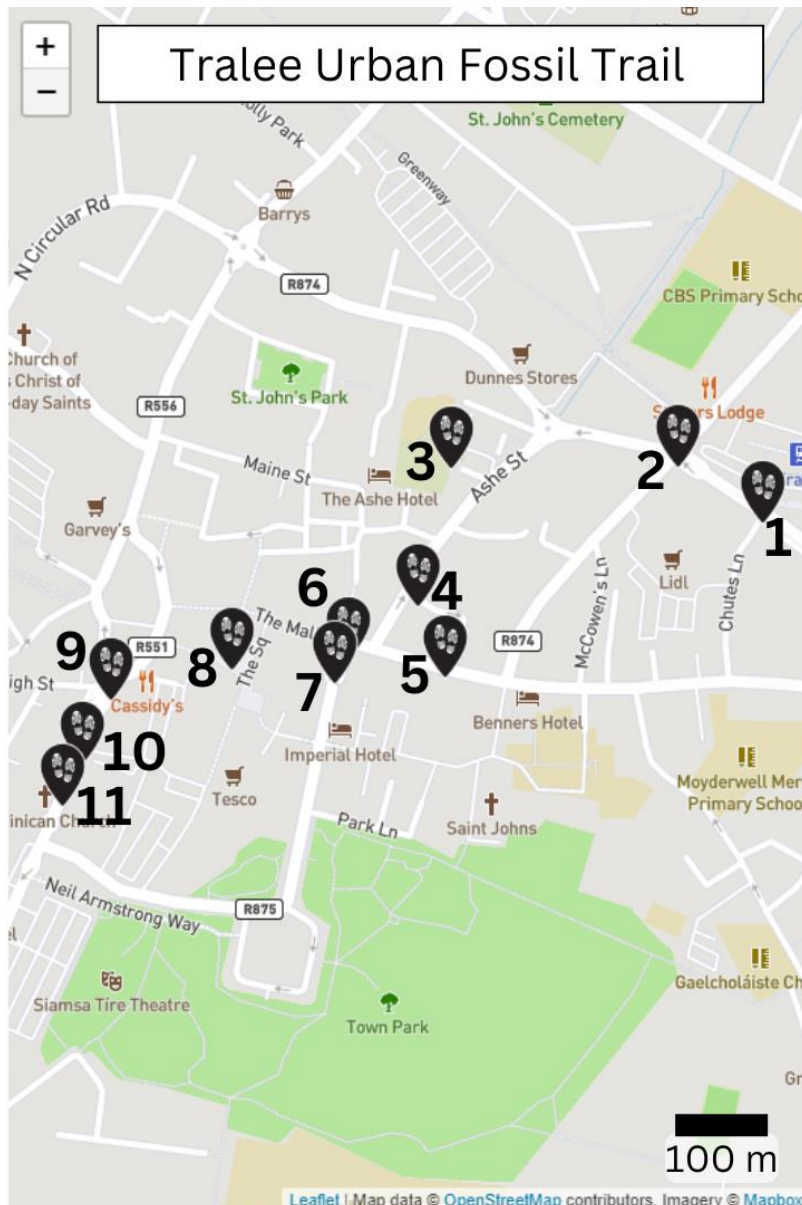
<https://www.ucc.ie/en/fossil-heritage/>

Follow us on social media for all the latest from Ireland's Fossil Heritage

Twitter @IrishFossils

Instagram @IrishFossils

Facebook @IrelandsFossilHeritage



1. Train Station Tralee

- Starting at the Train Station explore the building stones especially those around the windows outside the building. Here you will find brachiopod and coral fossils. The brachiopod fossils can be recognised as white circles or semicircles and the corals are characterised by a polka dot pattern. When you look at the “dots” closely you can see that they are circles with radial lines (like the spokes on a bicycle wheel).

2. Clounalour Medical Centre

- From the Train Station walk north-west along John Joe Sheehy Road to the corner of Edward Street. The dark grey paving stones outside the medical centre and also within the façade of the building itself contain brachiopods and corals. There are some fantastic large colonial coral fossils seen here.

3. Saint John the Evangelist Church

- Walk by the medical centre onto the North Circular Road and take the first left onto Ashe Street. At Saint John the Evangelist Church explore the building blocks of the

walls outside the churchyard, they are made of light grey limestone with white brachiopod fossils.

4. **Tralee Courthouse**

- Continue along Ashe Street until you reach the courthouse. Some of the building blocks of the courthouse are densely packed with brachiopod fossils. Similiar fossils can be seen in building blocks of the Kerry Protestant Hall across the road from the courthouse.

5. **Lower Castle Street**

- Keep walking down Ashe Street and then turn left onto Lower Castle Street. Some of the dark grey limestone paving stones along Lower and Upper Castle Street contain brachiopod fossils.

6. **AIB Bank Tralee**

- Turn west and continue along Lower Castle Street to the corner of Denny Street. The AIB Bank building here also contains many brachiopod fossils.

7. **The Pikeman Statue**

- Continue along Denny Street to the Pikeman Statue. The statue is made of a few different rock types that contain fossils. The pillars of the statue are an interesting red limestone (often incorrectly referred to as marble), that contains crinoid fossils. There are both individual crinoid ossicles and longer stem sections. Crinoid ossicles are small circular plates shaped like polo mints (10 mm across or less). The rest of the statue plinth is made of limestone blocks with lots of brachiopod and coral fossils.

8. **Benches in the Square**

- From the statue turn back in the direction you came from and turn left onto the Mall. Continue along the Mall and turn left onto Dominick Street stopping at the Town Square. The benches in the square are made of dark grey limestone and contain brachiopods and crinoids.

9. **Church of Holy Cross Statue**

- Leave the square to the west via Dominick Street, turning left onto Bridge street and continuing to Staughtons Row. Here you will find the Church of Holy Cross Statue. The building stones at the base of the statue contain brachiopod and crinoid fossils.

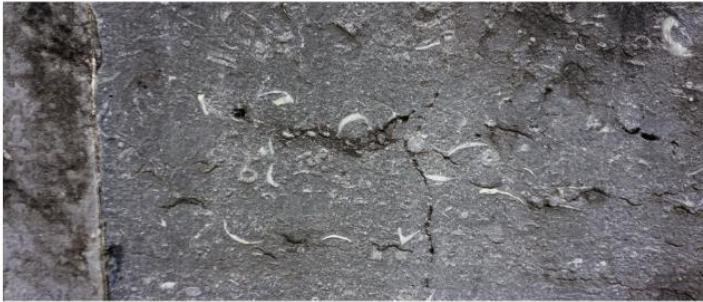
10. **Cark Park Archway**

- Walk along Staughtons Row and continue to Godfrey Place. There is a car park with an old stone archway at the entrance on the left hand side of the street here. The archway and the building blocks of the wall contain brachiopod fossils concentrated in discrete layers.

11. **Holy Cross Priory**

- Farther along Godfrey Place you will arrive at the Holy Cross Priory on the right-hand side of the road. Most of the building is constructed from red sandstone but the grey

limestone at certain levels of the building and around the doorways and windows contains fossils - brachiopods and crinoids.



Brachiopods in the court house walls



Coral outside Clounalour Medical Centre



Crinoid in the
Pikeman Statue



Brachiopod in the base of the Pikeman Statue