



IRELAND'S

FOSSIL

HERITAGE

Trace fossils

What are they

How do they form

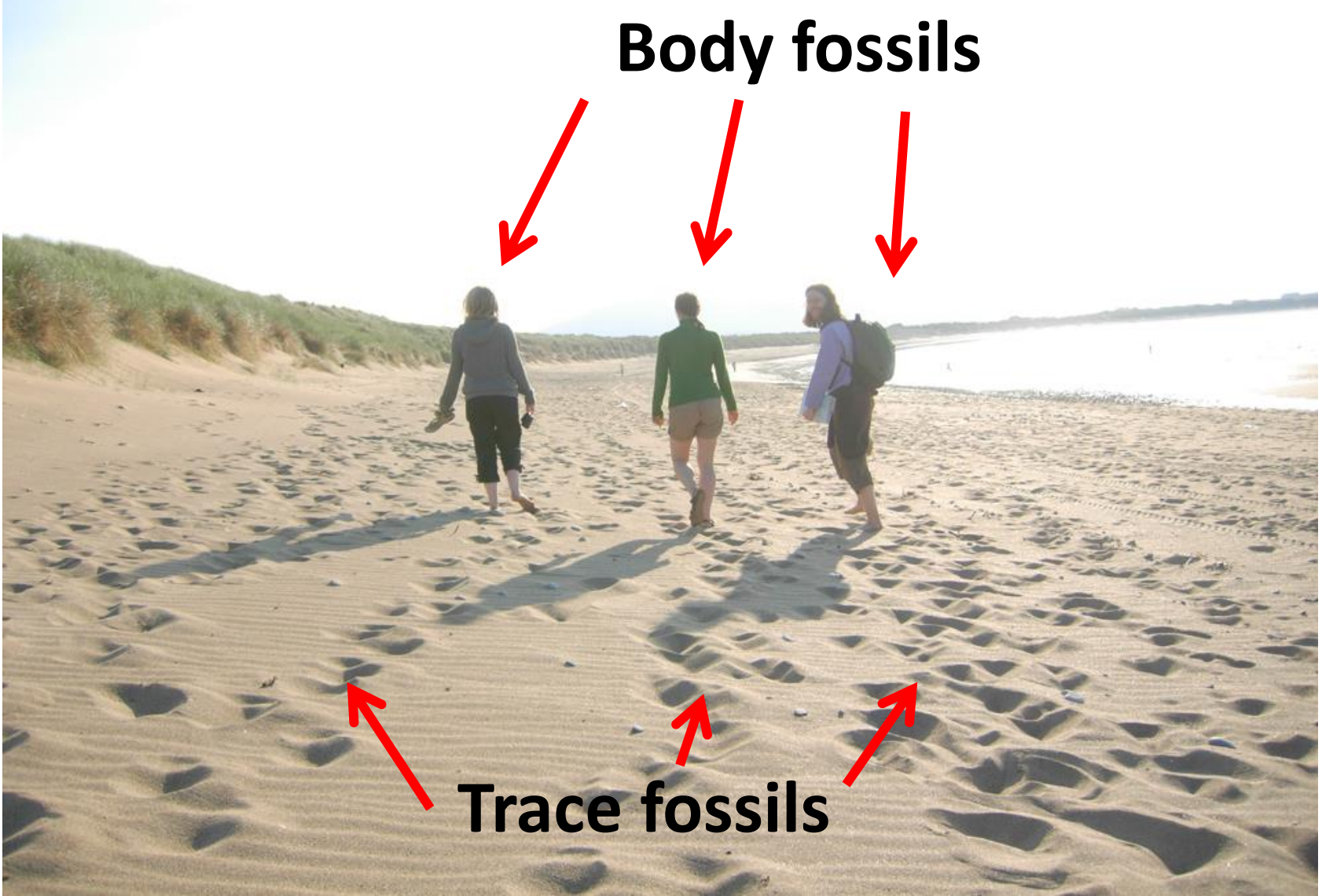
What do they tell us about
past environments

What gets fossilised?

Body fossils



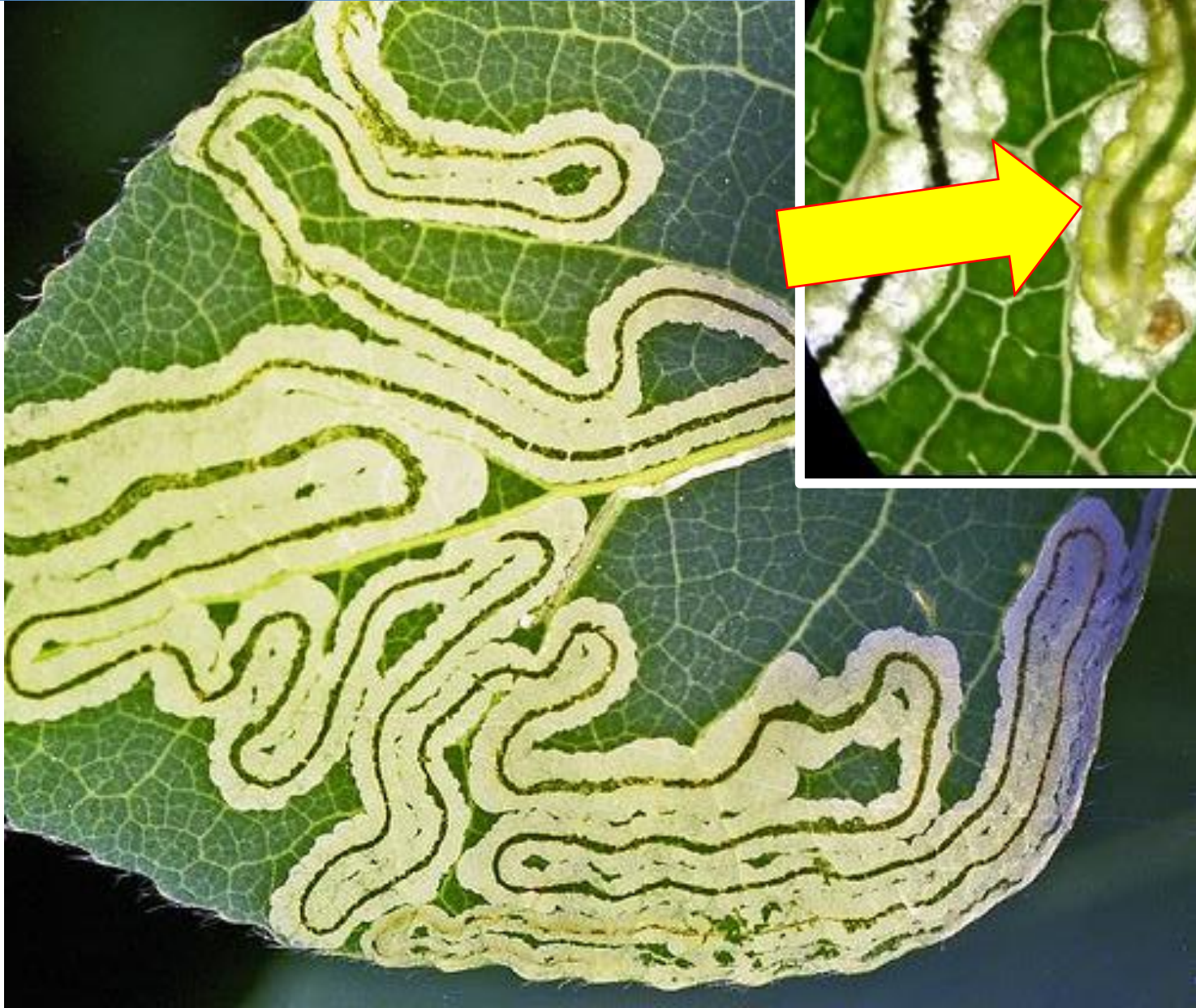
Trace fossils



Everyday trace marks



Everyday trace marks



Everyday trace marks



Everyday trace marks



Everyday trace marks



Everyday trace marks



Everyday trace marks



Everyday trace marks



Types of trace fossils



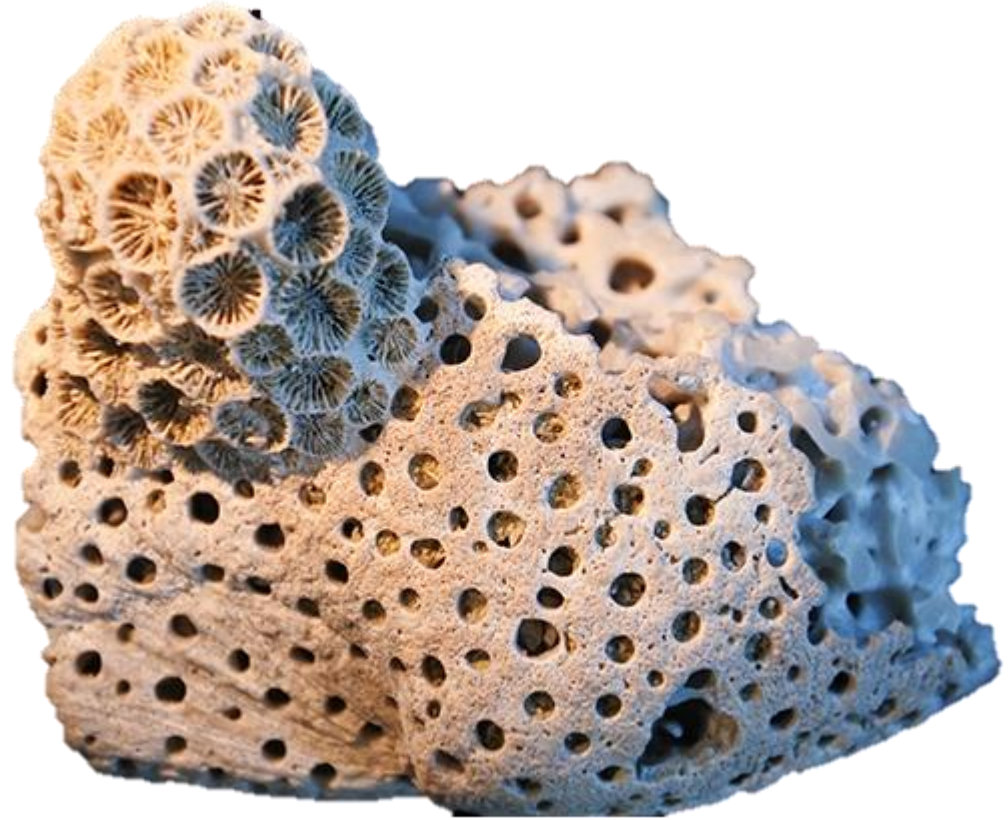
tracks



trails

Types of trace fossils

burrows



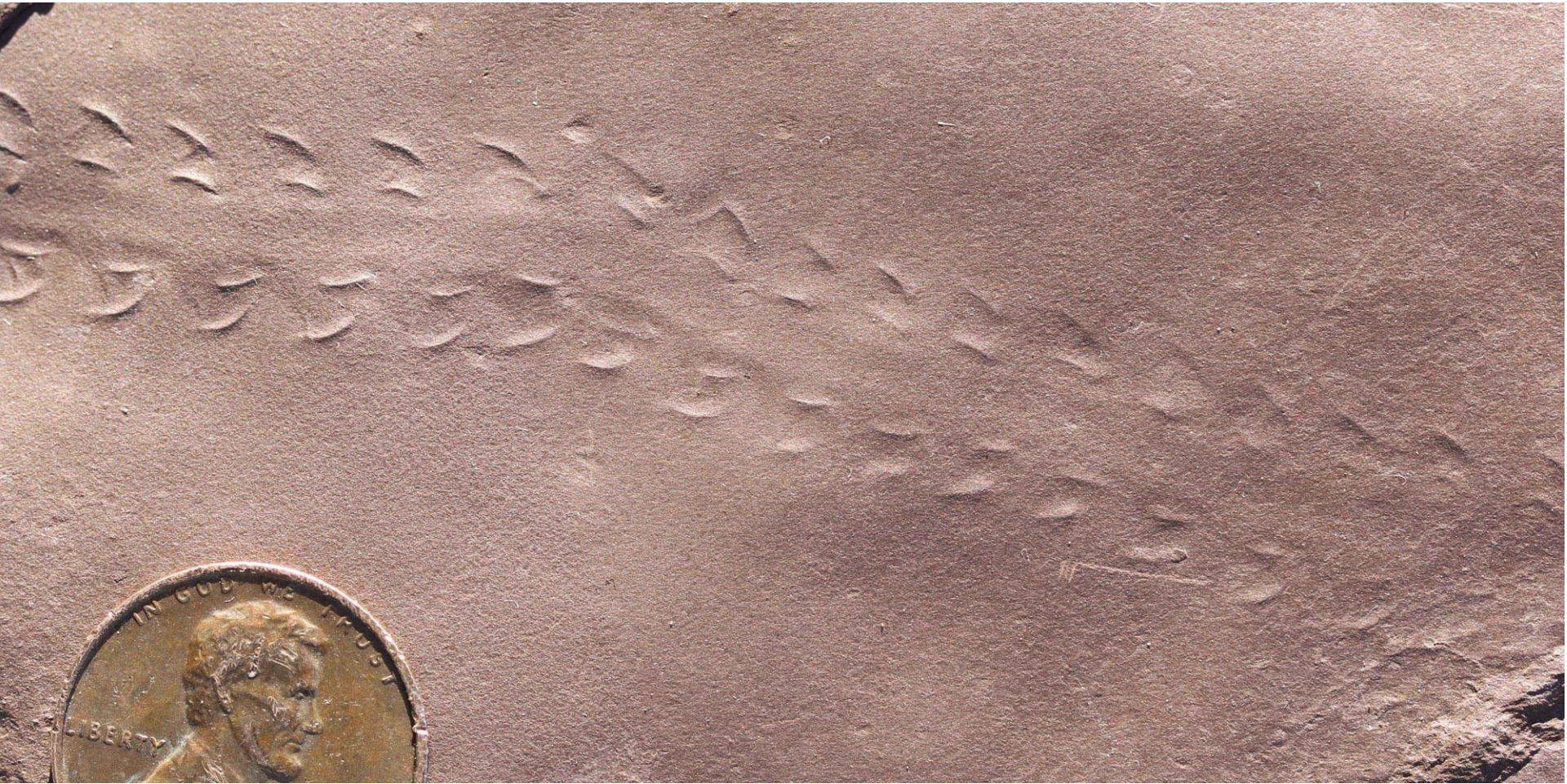
borings

Types of trace fossils



coprolites

Test



Test

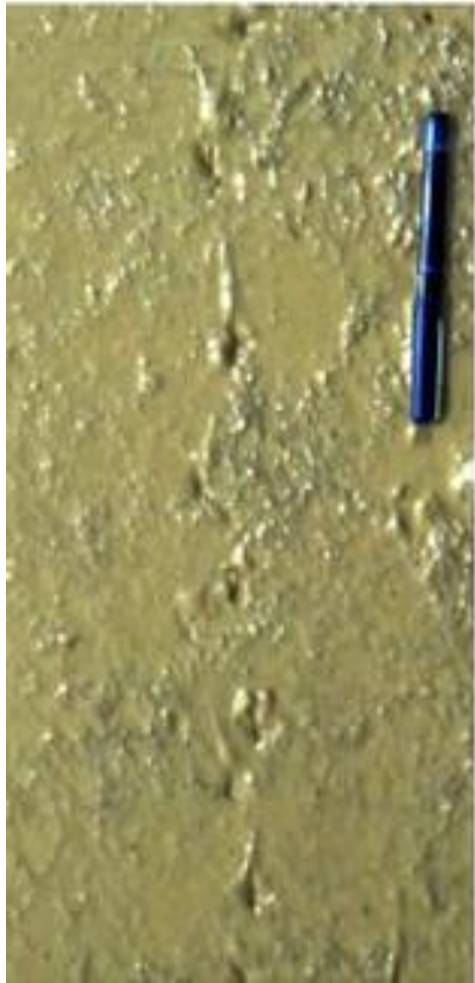


Test



How easy is it to make a trace?

Who made it?



One animal = different traces



Firm sediment



Soft sediment



Body features – toe shapes



Irish trace fossils – Olivellites



Irish trace fossils – Valentia Trackway





Fossil Map of Ireland

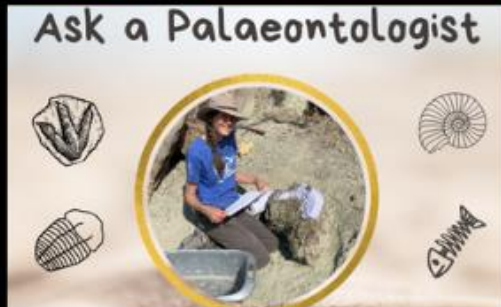
Ireland's Fossil Heritage has developed a fossil map showing you where you can find fossils yourself! The map also shows areas where fossils of special scientific importance have been found in Ireland.

The map also features a number of fossil walking trails set in ten major towns and cities in Ireland and showcases the wonderful fossils that you can find in the buildings and paving stones around us.

Filter by

Clear filters

- Public Sites**
See real fossils as they are in nature.
- Urban Sites**
Find fossils on the streets and in the buildings of Ireland's towns and cities.
- Discovery Sites**
Historic fossil finds of scientific importance.



WWW.UCC.IE/EN/FOSSIL-HERITAGE/

To find out more about Irish fossils check out our website.

We have lots of resources including a fossil map and fossil video game!