

A close-up photograph of a Native American man, likely from the Plains, wearing traditional regalia. He is holding a large, circular dreamcatcher in front of him. The dreamcatcher has a wooden hoop, a web of sinew, and is decorated with blue and white feathers and a blue stone. The man is wearing a grey and white patterned tunic, a red and blue striped sash, and a feathered headdress. The background is a warm, orange and yellow sunset or sunrise over a landscape.

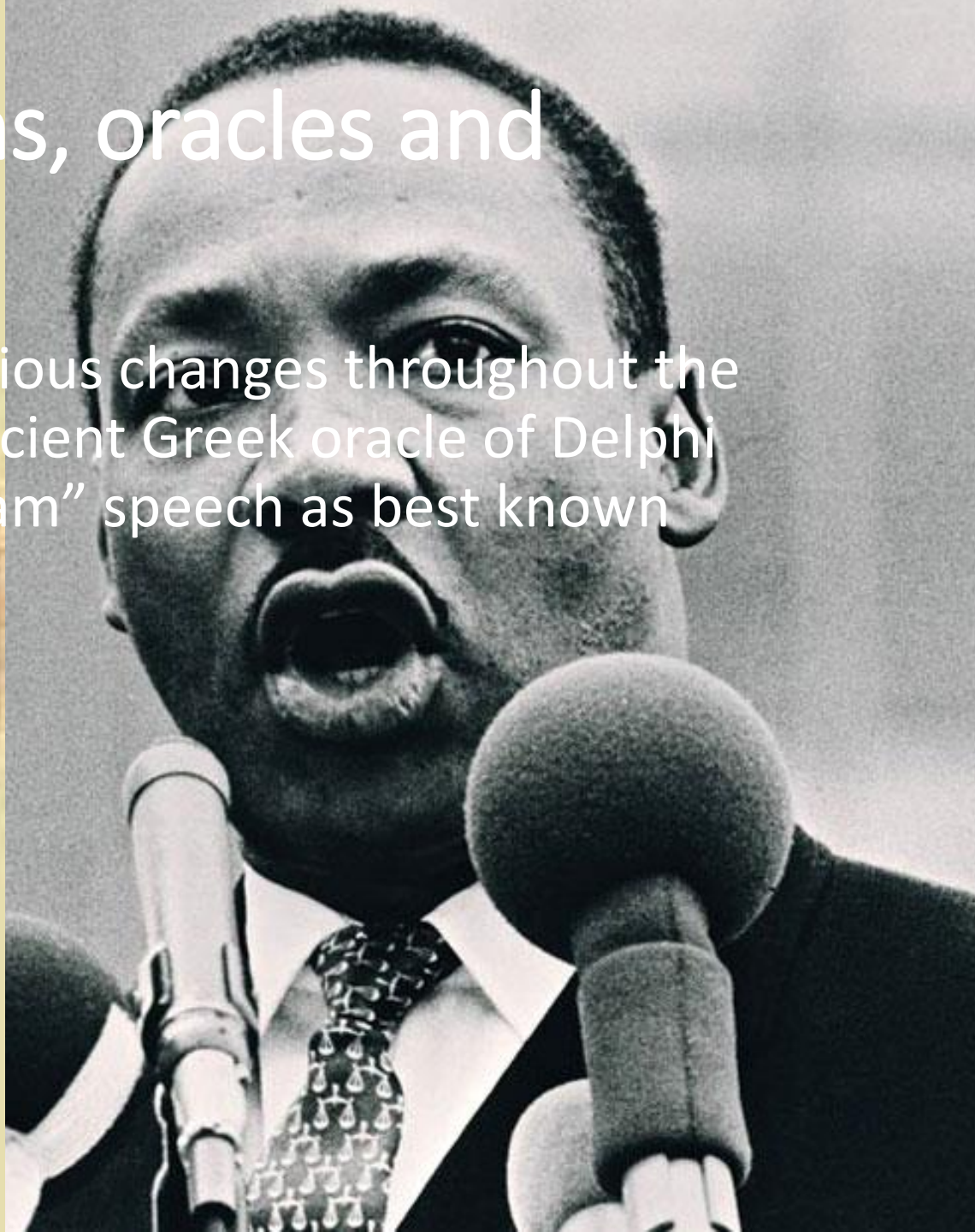
The Dream as a Metaphor of Transformative Change

Lidia Guzy,

Study of Religions, Marginalised and Endangered Worldviews Study Centre (MEWSC), UCC

Dreams, visions, revelations, oracles and prophecies

- have shaped societal, cultural and religious changes throughout the history of mankind, with Pythia, the ancient Greek oracle of Delphi and Martin Luther King's "I have A dream" speech as best known examples.



A serene landscape featuring a calm body of water in the foreground, reflecting the sky and distant mountains. The sky is a clear, pale blue, and the mountains in the background are covered in snow. The water is still, creating a perfect reflection of the scene above. On the right side, there is a dense forest of evergreen trees, their dark silhouettes also reflected in the water. The overall atmosphere is peaceful and quiet.

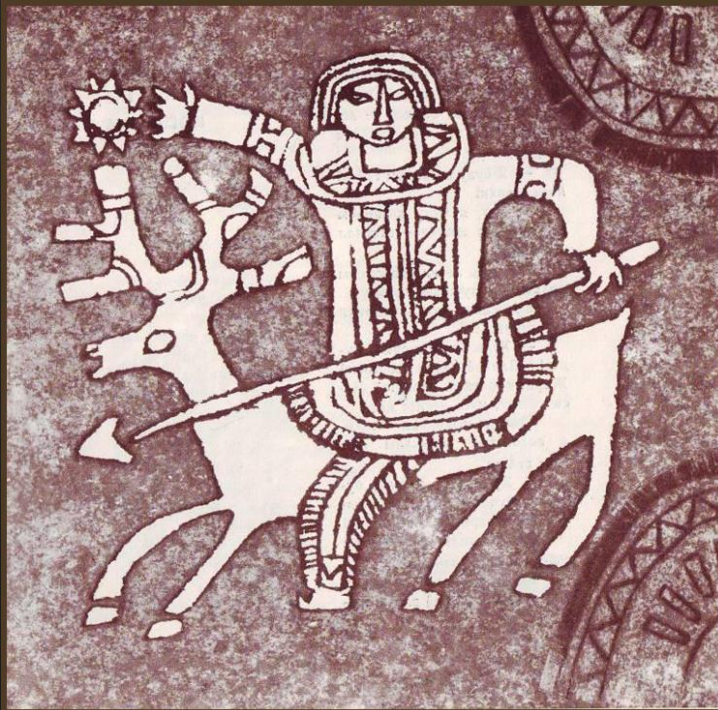
Shamanic dreams

Shamanism

- ◇ pre-eminently a religious phenomenon of Siberia and Inner Asia
- ◇ Throughout the immense area comprising the central and northern regions of Asia, the religious/ritual life of societies centers on the shaman.



Siberian origin of term “shaman” “shamanism”



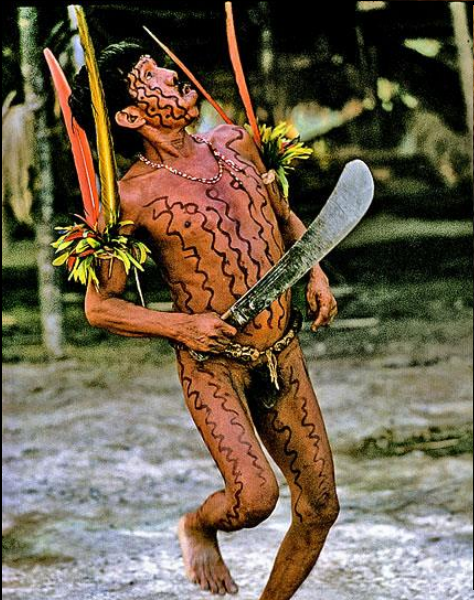
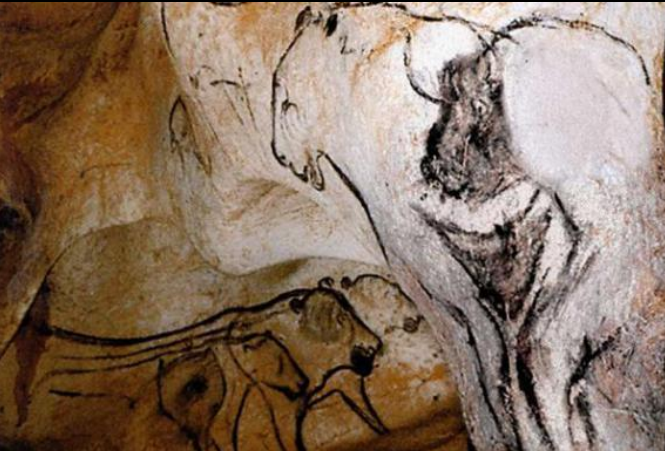
From Tunguz šaman, the Tungusic
language of the Evenki in eastern
Siberia Russian

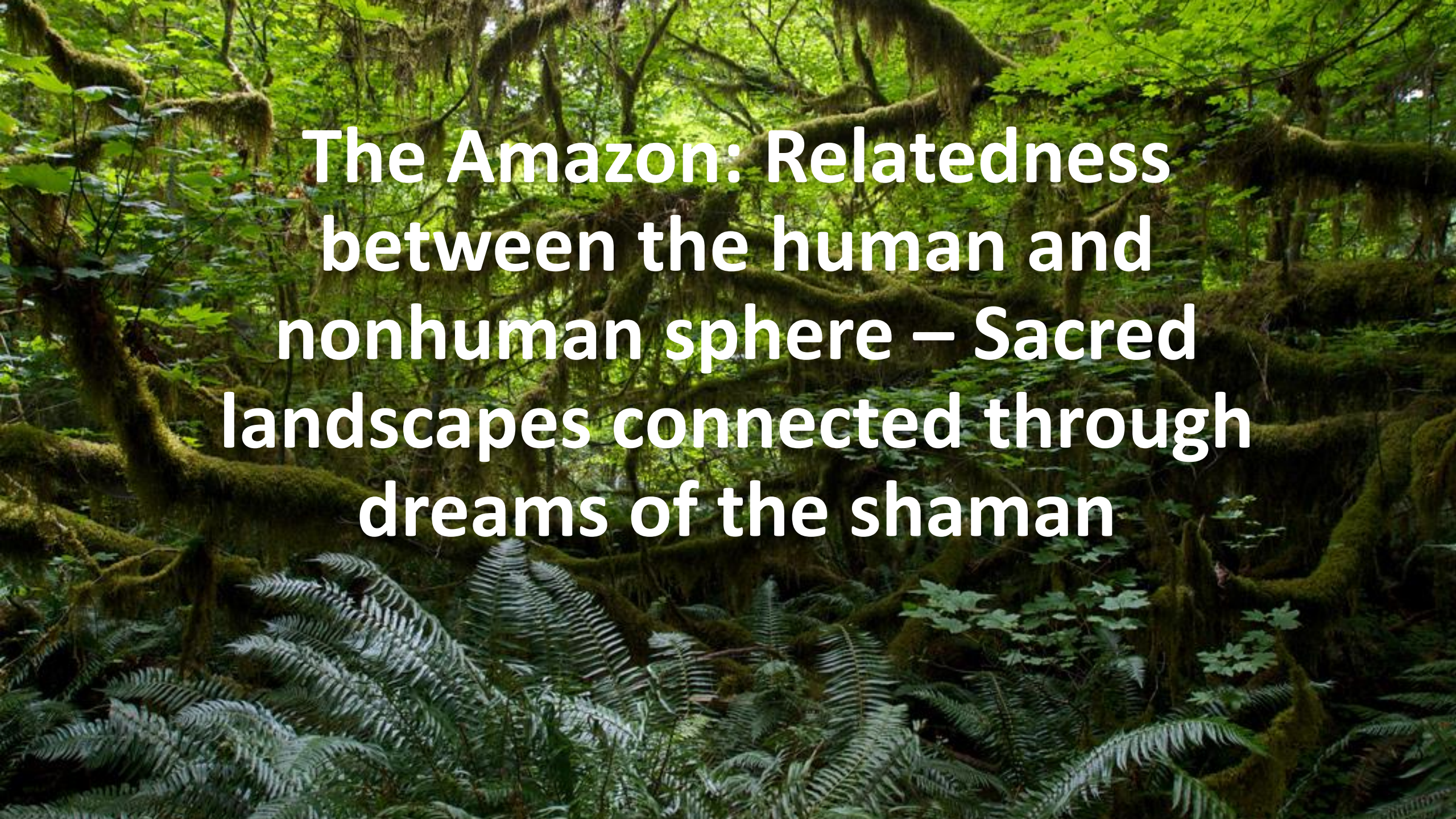




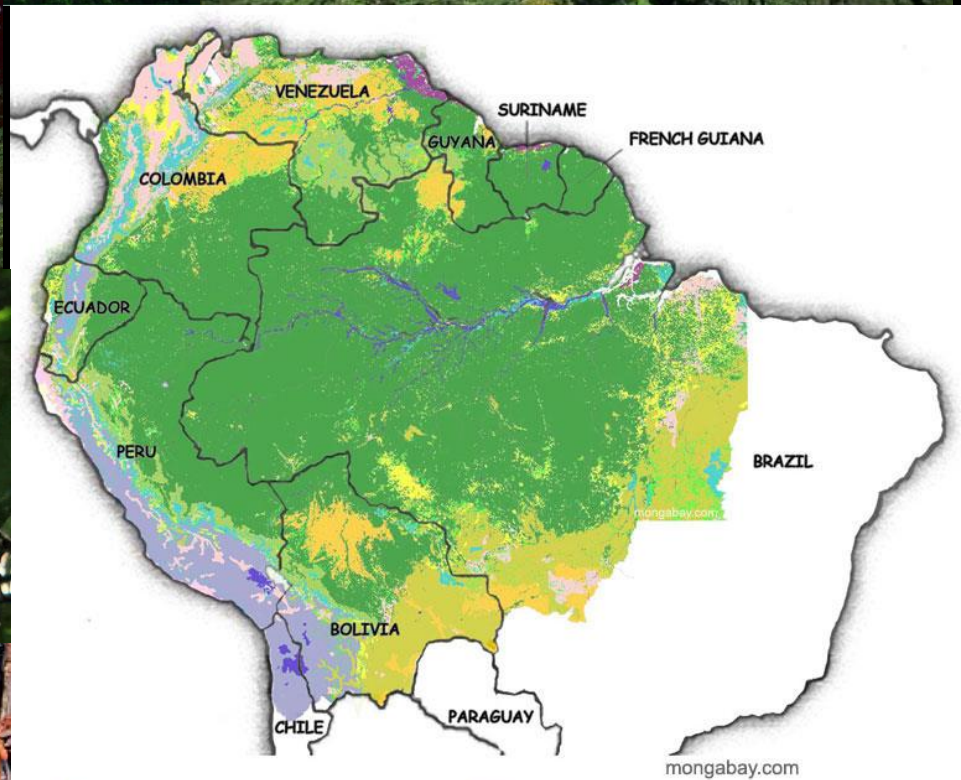


Therianthropy and shamanic dreams human –non human- animal transformations – shapeshifting



A photograph of a dense, moss-covered forest floor. Large, gnarled tree trunks are visible, heavily draped in thick green moss. The ground is covered with a variety of lush green plants, including large ferns in the foreground. Sunlight filters through the dense canopy, creating a dappled light effect on the forest floor. The overall atmosphere is one of a vibrant, ancient, and sacred natural space.

**The Amazon: Relatedness
between the human and
nonhuman sphere – Sacred
landscapes connected through
dreams of the shaman**



- | | |
|-----------------------------------|-------------------------------|
| Lowland moist forest | Savannah woodlands |
| Mangrove and coastal swamp forest | Grasslands |
| Sub-montane forest | Subdesertic vegetation |
| Montane forest | Montane mosaics |
| Fragmented forest | Seasonally flooded grasslands |
| Converted forest | Agricultural mosaics |
| | Subdesertic vegetation |

Inland water
No data

Based on the Vegetation Map of Tropical South America,
H.D. Eva et al. (1999) TREES Publications Series, European

A close-up, partial view of a person's face, showing the eye, nose, and cheek. A yellow feather is visible near the eye.

THE FALLING SKY

WORDS OF A
YANOMAMI SHAMAN

DAVI
KOPENAWA
BRUCE ALBERT

TRANSLATED BY
NICHOLAS ELLIOTT
AND
ALISON DUNDY

Eco-Cosmology of the Yanomami

The Falling Sky

by Davi Kopenawa and
Bruce Albert



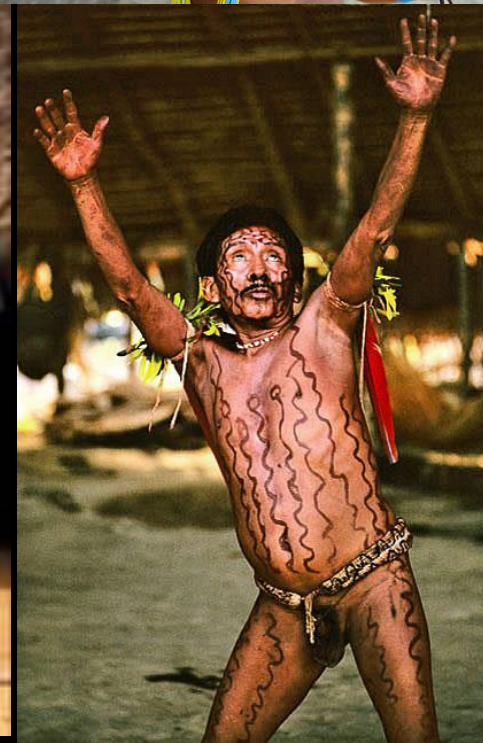
<http://www.survivalinternational.org/films/yanomamiland>

Eco-cosmology of Yanomami Shamanism



Holding the Sky

- Saving the word as today's task of Yanomami Shaman



Yanomami shaman during healing sessions



The image features a dramatic sky at sunset or sunrise, with dark, silhouetted trees in the foreground. The sky is filled with large, dark clouds, and a bright, glowing light source is visible through the trees, creating a strong backlight effect. The overall mood is contemplative and inspiring.

Learning to dream in order to Transform