



UCC

University College Cork, Ireland
Coláiste na hOllscoile Corcaigh

School of **Public Health**



Civic and Community Engagement Committee Report 2021 – 2024

Report Compiled By:

Dr M. Smiddy and the members of the School of Public Health Civic and Community Engagement Committee

Submitted to School of Public Health Executive Management Committee 2/12/2024

Ratified by School of Public Health Executive Management Committee 2/12/2024

Contents

Forward	3
Professor Ivan Perry, former Head of School, School of Public Health	3
Denise Cahill – External Partner, Healthy Cities Coordinator for Cork City	4
Breda O’ Donoghue - Community Engagement Partner, Director for Advocacy, The Traveller Visibility Group	4
Committee Members (2021 – 2024)	5
Maura Smiddy, Chair School of Public Health Civic and Community Engagement Committee / Lecturer School of Public Health	5
Zubair Kabir, Senior Lecturer School of Public Health	5
Mary Cronin, Lecturer School of Public Health	6
Emmy Racine, Programme Manager for PPI Ignite Network	6
Eunice Banduki, BSc in Public Health Student, School of Public Health	6
Edel Burton, past PhD Student, School of Public Health	7
Margaret Mannix-Sheahan, Administrator, School of Public Health	7
Maria Roura, Senior Lecturer School of Public Health (2020 – 2023)	7
Martin Davoren – External Partner, Senior Specialist in Social Inclusion, Cork City Council, Cork.	8
Denise Cahill – External Partner, Healthy Cities Coordinator for Cork City	8
Introduction.....	9
Committee Terms of Reference	11
1. Focus and Purpose	11
2. Committee Operations	11
3. Community Engagement Plan Implementation.....	14
4. Review process	14
Community Engaged Activities supported by the Committee.....	16
Civic and Community Engagement (CCE) Report - School of Public Health Away Day 1 st June 2023.....	17
Figure 1. Strengths and Weakness Identified related to Civic and Community Engagement within the SPH...	17
Challenges related to Engagement were identified as:	17
Teaching Activities and CCE:.....	18
Table 1. Strengths and Weakness related to Teaching Activity and CCE	18
Research Activities and CCE:	18
Table 2. Strengths and Weaknesses related to Research Activity and CCEC	18
Emerging Actions:	18
Actions to Date:	19
School of Public Health Staff Civic and Community Engagement Activities	20
Table 3. School of Public Health staff CCEC activities. Mapped to the following engagement categories: Community Engaged Research, Community Engaged Learning and Public Engagement.....	20
Acknowledgements and Glossary.....	35
References:.....	36

Forward

Professor Ivan Perry, former Head of School, School of Public Health



The core vision of UCC's School of Public Health is to be at the heart of society's organised efforts to prevent disease and to protect and promote the health and wellbeing of the population. This vision is realised through research and teaching and through civic and community engagement, including collaborative work addressing the societal and health service-related determinants of health and wellbeing at national and local level in partnership with government departments, local government, statutory agencies, the voluntary sector, community groups and individuals.

UCC regards civic and community engagement as part of the life blood of our University. It happens at all scales, and at all levels - from individual staff or student actions, to school, college or curriculum level projects and right through to University-wide initiatives. Civic participation is absolutely integral to the work of the School of Public Health. It informs and energises our research and teaching agenda and helps ensure that our work remains grounded in the ever-changing issues and challenges to health and wellbeing that arise in our local community and wider society.

As a former Head of School, I am very proud of the School's contribution to civic and community engagement and deeply grateful to colleagues in the School who have forged deep and productive partnerships with a wide range of local and national stakeholders, working on their own initiative and often taking on significant additional work and travel commitments. This report seeks to document the School of Public Health's contribution to civic and community engagement, both to acknowledge and celebrate achievements to date and to set out a challenging agenda for the future, commensurate with the challenges to health and wellbeing that we face in the 21st century.

Denise Cahill – External Partner, Healthy Cities Coordinator for Cork City

Community participation and engagement are at the heart of effective public health practice and a key ingredient in innovative and responsive project development and implementation to achieve all health goals and targets of Sustainable Development Goals.



Community and civic engagement are core principles underpinning the Healthy Cities movement. In order to advance public health knowledge community engagement and professional practice must be defined and executed in a manner that is agreed respectfully, while recognising that the power of communities is the key to achieving better health for all. At its core, community engagement enables change in behaviour, environments, policies, programmes and practices within communities.

The World Health Organisation has defined community engagement as “a process of developing relationships that enable stakeholders to work together to address health-related issues and promote well-being to achieve positive health impact and outcomes”.

The Civic and Community Engagement Committee provided an opportunity for the partners involved to reflect on the true meaning of collaboration. Collaborative and community-oriented engagement with academic partners allows for the transferability of project findings to a broader audience and through this process also promoting broader public health and well-being while fostering a learning environment for all involved.

This has been an exciting and thought-provoking process and we look forward to building on the many opportunities for collaboration in the promotion of public health and Cork and beyond.

Breda O’ Donoghue - Community Engagement Partner, Director for Advocacy, The Traveller Visibility Group



The Traveller Visibility Group (TVG) has been engaging with the School of Public Health, APC Microbiome and a number of other departments in UCC for many years. As a Traveller organisation our aim is to promote a better understanding of Travellers’ rights, culture, and the social determinants of Travellers’ health, and working with staff in UCC helps us in this. We’ve worked in partnership on research projects to ensure our community is centrally involved in research related to Travellers, and we deliver inputs to students in a number of UCC programmes so they meet with Travellers and hear first-hand about our lived experiences. TVG’s engagement with the School of Public Health and other UCC departments is based on mutual respect and shared benefits, and we look forward to it continuing.

Committee Members (2021 – 2024)

Maura Smiddy, Chair School of Public Health Civic and Community Engagement Committee /
Lecturer School of Public Health

Dr Maura Smiddy is the Chair of the School of Public Health (SPH) Civic and Community Engagement Committee (CCEC) and the SPH representative on the College of Medicine and Health.



Maura has a background in nursing, midwifery and infection prevention and control. She completed her PhD in 2019 which was entitled, “An Evaluation of the Efficacy of Observational Hand Hygiene Auditing. A mixed methods approach” and explored the practice of observing hand hygiene practices as a quality improvement initiative in clinical practice. Maura developed and is Director of the MSc in Infection Prevention and Control and teaches on the BSc and Master of Public Health programmes.

Maura’s research interests focus on the prevention of infection and provision of safe patient care. Her recent research focussed on identifying research priorities for infection prevention and control professionals and an evaluation of teaching in infection prevention and control; collating patient and staff stories related to antimicrobial resistance and sepsis in association with the School of Pharmacy; and is a collaborator on the Horizon 2020 Promoting Positive Mental and Physical Health in changing Work Environments ([PROSPERH](#)) project. She is the Chair of the [Infection Prevention Society](#) (IPS) Research and Development Committee leading on research and education supports for IPS members.

Zubair Kabir, Senior Lecturer School of Public Health

Dr Zubair Kabir is a Senior Lecturer in the School of Public Health and the [Chair of SPH Ethics Committee](#). He is a member of the [Health Research Consent Declaration Committee](#) (HRCDC) appointed by the Minister for Health. He is a member of the [UCC SHAPE Cluster](#). He is the MPH (campus) Program Director. He is a Research Associate affiliated with the [TobaccoFree Research Institute Ireland](#). He is a member of the Cork City PPN (Public Participation Network) on the SALAAM project on anti-racism and public engagement.



Zubair is the primary and lead researcher from Ireland on the Global Burden of Disease (GBD) Study and has collaborated with the Institute for Health Metrics & Evaluation (IHME)- University of Washington on 50+ co-authored [high-impact publications](#) since 2016. He is research active and is on the Management Committee of the EU COST Action [European Burden of Disease Network](#) representing Ireland. He led a work package on a [Horizon 2020-funded project](#) (unCoVer).

Zubair’s research and advocacy focuses on tobacco control and alcohol policy. He is the Founder Editor-in-Chief of [Tobacco Use Insights](#). He has been recently appointed the Chair of the Alcohol, Tobacco, and Drugs Action Group of the UCC Healthy Campus initiative.

Mary Cronin, Lecturer School of Public Health

Ms Mary Cronin is a Social Scientist and College Lecturer in the School of Public Health (SPH), UCC since 2006. She's the lead academic for teaching in the discipline of Health Promotion and makes a unique contribution to the breadth of research in the SPH through her work on the social determinants of the health inequities experienced by the Traveller community in Ireland.

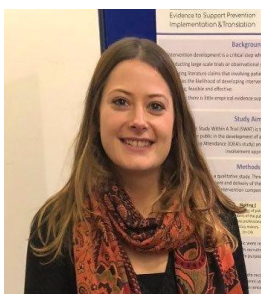


Mary has worked on a number of community engaged research projects with the Traveller community in recent years including the current peer-research study on Traveller Accommodation and Microbiome Health, in partnership with the Traveller Visibility Group and Prof. Fergus Shanahan of APC Microbiome Ireland UCC; these projects have been funded by UNIC4ER UCC and Science Foundation Ireland. Mary has been a College of Medicine and Health nominee to UCC's Civic and Community Engagement committee since 2018.

She is the Co-chair of the CoMH Civic and Community Engagement committee since 2023. She was Co-Convenor of the Inclusion Health Research Group in the College of Medicine and Health from 2022-2024 and is committed to supporting community-engaged research knowledge and practice among colleagues and students.

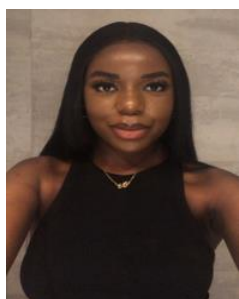
Emmy Racine, Programme Manager for PPI Ignite Network

Dr Emmy Racine is the Programme Manager for PPI Ignite Network @ UCC and has over seven years' experience in conducting, researching, and promoting Public and Patient Involvement (PPI) and has extensive in-depth knowledge of PPI theory and practice.



Emmy's research interests include Public and Patient Involvement (PPI) approaches and impact, participatory and engaged research processes and patient experience research. She completed her PhD in 2020 which was entitled: 'It's a nice thing to do but...': Exploring the methods and impact of PPI in trials. This research explored PPI contributors' experiences and contributions at the design, conduct and dissemination stages of trials.

Eunice Banduki, BSc in Public Health Student, School of Public Health



Hello everyone. I'm Eunice, a passionate final year student studying Public Health Science. Having been a committee member from 2021 to 2023, I had the incredible opportunity to contribute to a committee with a powerful purpose. Our mission was to enrich scholarship, research, and creative activity, while also enhancing curriculum, teaching, and learning. We aimed to prepare educated and engaged citizens, strengthen democratic values and civic responsibility, and address critical societal issues and making a towards making a positive impact on the public.

Edel Burton, past PhD Student, School of Public Health

Edel is a graduate of the HRB SPHeRE (Structured Population Health and Health-services Research Education) and was a PhD Scholar in the School of Public Health.



Edel is a Pharmacist and was awarded her PhD in November 2024 as a graduate of the HRB SPHeRE PhD Scholar programme. She focussed her research on Chronic Disease Prevention on the Collaborative Doctoral Programme. She graduated with a First-Class Honours Bachelor of Pharmacy degree from UCC in 2019. Edel's PhD thesis was entitled, the impact of the COVID-19 pandemic on prehospital emergency care for stroke/transient ischaemic attacks (TIAs) and implications for future policy and service delivery.

Edel's research interests include chronic disease prevention, antimicrobial stewardship, and pharmacotherapy optimisation in the multimorbid ageing population. She has combined research and practice during her time in three Cork hospitals, which has informed her health-services research to date.

Margaret Mannix-Sheahan, Administrator, School of Public Health

Margaret is an Administrator in the School of Public Health and provides administrative support for this Committee since June 2022.



Margaret has worked in administrative roles in UCC since 1999. She started in the Faculty of Commerce Office and then moved to the College of Science, Engineering & Food Science Office before I joined the School of Public Health in March 2022. She has worked in several roles prior to working in UCC within the Tourism Sector and in Cork County Council. She is currently the Executive Assistant for the Infection Prevention & Control and Health Protection Programmes.

Maria Roura, Senior Lecturer School of Public Health (2020 – 2023)



Dr Maria Roura was Senior Lecturer in the School of Public Health (2020 – 2023). She is a medical sociologist (PhD, 2002) with over two decades of experience teaching, supervising, and conducting research in diverse socio-cultural settings in Asia, Africa, the Americas, and Europe. With a specific focus on qualitative research, her work covers a broad spectrum of Public Health matters, including HIV, COVID-19, Tuberculosis, Zika, Chagas, the social determinants of health, sexual and reproductive health, gender violence, occupational health, water & sanitation, health systems, migrant/ethnic minority health, and nosocomial infections.

Martin Davoren – External Partner, Senior Specialist in Social Inclusion, Cork City Council, Cork.



Dr Martin Davoren joined Cork City Council in October 2024 as Senior Specialist in Social Inclusion where he leads the Community Team responsible for Community Development, Social Inclusion, Integration, Rapid responses, Age Friendly, and the implementation of Slaintecare Healthy Communities including Healthy Cities and Healthy Ireland.

He also holds an adjunct Senior Lecturer position with the School of Public Health, University College Cork, where he previously worked as a lecturer and researcher.

Martin was previously Executive Director of the Sexual Health Centre. Prior to that he was Assistant Director for Networks and Knowledge Translation with the SPHeRE Programme, Ireland's national research training programme for population health and health services research. He was also in charge of setting up, directing and evaluating UCC Health Matters, Ireland's Health Promoting University. Martin's research focused on alcohol use, drug use and sexual health. He was principal investigator and co-applicant on several funded projects.

Denise Cahill – External Partner, Healthy Cities Coordinator for Cork City

Denise is the Healthy Cities Coordinator for Cork City and Adjunct Lecturer in the School of Public Health in University College Cork. Denise has extensive knowledge, experience and understanding of health promotion, wellbeing and a commitment to the social determinants of health and the reduction of health inequalities.



Denise graduated with a Degree in Sports & Exercise Science in 1998 and a Masters in Health Promotion in 1999. Denise has over 25 years of experience working in Public Health and Health Promotion in the Health Service in Ireland in a variety of roles including Public Health Research and Information Officer, Health Promoting Schools, Community Health, Physical Activity, Tobacco Control management, Health Promotion Training and now in the area of Healthy Cities.

Denise has a strong and productive commitment to garnering productive Inter-Agency collaborations to promote public health and at present has a key role in a variety of health-related Cork city based Inter-Agency projects and partnerships. Denise also has a strong personal and professional interest and commitment to climate justice and environmental sustainability.

Introduction

The School of Public Health (SPH) Civic and Community Engagement Committee (CCEC) was established in 2021 when we noted the breath of civic and community engaged work being done by members of staff and the natural symbiosis between public health and civic and community engagement. University College Corks first CCEC plan was launched (2017 – 2022) with the vision of becoming more Connected, Visible and Engaged with and for Community. The report and supportive guidance from Dr Martin Galvin led to the establishment of the SPH Committee.

The Towards a European Framework for Community Engagement in Higher Education programme (TEFCE) describes community engagement is how universities engage with and meet “*societal needs in partnership with their external communities*” (Farnell et al. page 5, 2020). This consideration of the value and importance of engaging with communities and organisations outside of the academic setting has become even more important since the COVID-19 pandemic. In addition, the integration of the United Nations Sustainable Development Goals (UNDP 2021), into our teaching and learning and, research activities provides a rich opportunity to engage with colleagues, stakeholders and community organisations to implement university activities in a collective partnership to achieve our shared goals.

Community Engagement refers to collaboration between universities and community partners to exchange, develop and generate knowledge, research and mutually beneficial supports to the benefit of society (Carnegie Community Engagement Classification, 2020). *The purpose of community engagement is the partnership (of knowledge and resources) between colleges and universities and the public and private sectors to enrich scholarship, research, and creative activity; enhance curriculum, teaching, and learning; prepare educated, engaged citizens; strengthen democratic values and civic responsibility; address critical societal issues; and contribute to the public good* (Carnegie Community Engagement Classification, page 1, 2020). Reciprocity between University and Community partners is integral to the process. When community engaged learning and teaching, community engaged research or outreach / volunteering activities are considered the processes must be equitable, reciprocal and informed by all participants.

To further the integration of community engagement into learning, teaching, research and outreach activities within the SPH practical application needs to be considered. Community based learning (CBL) “*is a course or discipline-based collaboration between students, lecturers and civil society partners for mutual benefit through shared learning*” (Martin and O’Mahony, 2013). Community-engaged learning, “*seeks to engage and accredit students, within the curriculum, for working in partnership with civic and civil society organisations (CSOs) to act on local societal challenges*” (Campus Engage (2018 – 2020), page 9).

Community based research (CBR) “*is a collaborative approach to research that equitably involves all partners in the research process and recognizes the unique strengths that each brings*” (Israel et al., 1998, p. 177). The concept of engaged research has developed and evolved to describes the breath of, “*research approaches and methodologies that share a common interest in collaborative engagement with the community. It aims to improve, understand, or investigate an issue of public*

interest or concern, including societal challenges. Engaged research is advanced with community partners rather than for them. 'Community' refers to a range of public research stakeholders, including public or professional service and product users, policy makers, civil and civic society organisations (CSOs) and actors" (Engaged Research: Society and Higher Education Working Together to Address Societal Challenges, Campus Engage, 2017).

We also need to consider the considerable work implemented in terms of volunteering and outreach activities. We can also view these activities under the umbrella of *"Public engagement and involvement"*, which includes diverse engagement activities including volunteering and outreach activities which *"combine to create a culture of societal engagement with higher education. Public engagement is about the institution facing outwards and connecting as widely as possible to communicate the value of learning and research and to leverage institutional knowledge and resources for social good"*, (Campus Engage (2018 – 2020), page 11).

Engagement integral to the Connected Curriculum and is one of the five objectives of BELONGING AT UCC: A Strategic Framework and Action Plan for Equality, Diversity and Inclusion (2025 – 2028) developed by the Equality, Diversity and Inclusion Unit, UCC. This strategy aims to understand and work within our university community and with external partners to develop and implement EDI in a meaningful manner for the betterment of society. All the elements above cannot be viewed in silos as they can successfully inform each other to strengthen mutual benefit for students, universities and community partners. To establish a better understanding of the CCE work being undertaken by staff in the SPH we conducted a brief exploratory exercise (page 19), which maps staff activities to the following categories, Community Engaged Research, Community Engaged Learning and Public Engagement activities.

A sincere thank you to past members and those stepping down this year, Maria Roura, Eunice Banduki and Edel Burton.

Also, welcome to the new members joining in November 2024, Joseph O'Keeffe and Chloe McDonough (BSc in Public Health Student Representatives), Aoife O'Mahony and Monica O'Mullane (Research Representatives) and Elizabeth Oluwaseyi Bodunde (PhD Candidate).

Committee Terms of Reference

1. Focus and Purpose

Focus: Community engagement describes the interaction with and collaboration between a University, its staff and students, with the wider community for the mutually beneficial exchange of knowledge and resources in a context of partnership and reciprocity.

Purpose of the School of Public Health Civic and Community Engagement Committee: The purpose of the SPH CEC is to enrich scholarship, research, and creative activity; enhance curriculum, teaching and learning; prepare educated, engaged citizens; strengthen democratic values and civic responsibility; address critical societal issues; contribute to the public good; and make available cultural, recreational and other assets and contribute to the regeneration of neighbourhoods and community wellbeing (Carnegie Community Engagement Classification, 2006).

2. Committee Operations

Roles and Responsibilities

The Civic and Community Engagement Plan will be overseen and supported by a committee of no more than 14 members including representatives from:

- Senior academic staff
- Junior academic staff
- Administrative staff
- PhD Candidate (MPH students only available for 1 year)
- Undergraduate student x 2
- Research Assistant / Post Doctoral Researcher
- External partners

The committee will adhere to university guidelines and policies on Equality. Committee member's terms will consist of two years in line with local practice in the SPH.

The SPH School Executive Committee will be responsible for the governance of the initiative.

In particular, the CCEC committee will:

- Oversee continuity with the strategic direction and implementation of the UCC Civic and Community Engagement plan.
- Map Civic and Community Engagement and produce an annual report for SPH.
- Develop a localised strategic plan in line with the UCC Civic and Community Engagement plan that is responsive to an inclusive of community suggestions.

- Develop an implementation plan for achieving the CE plan identifying specified targets and those with responsibility for delivery.
- Establish and oversee sub-committees and / or working groups as may be required.

Reporting Relationship

- The committee will report directly to the SPH Executive Committee.

Chair of the Committee

A Chairperson will be agreed at the SPH Executive Committee. The Chairperson will chair committee meetings and set its agenda in close consultation with members. The Chairperson has responsibility for the following functions:

- Attend all committee meetings;
- Ensure all committee activities are recorded;
- Coordinate, follow up on and implement the strategic decisions of the committee;
- Assume authority for the day to day operations of the initiative;
- Liaise with all committee sub-structures / working groups;

Deputy Chair

A deputy chairperson will be selected by a simple majority vote of the committee. The person will be an academic. S/He will have excellent knowledge of the strands prioritised in this initiative and a strong knowledge of the national policy arena.

Administrative Support

Administrative Support will be provided by the SPH. The administrative support has responsibility for the following functions:

- Attend all committee meetings
- Record all committee activities;
- Coordinate, follow up on and implement the strategic decisions of the committee
- Assume authority for the day-to-day operations of the initiative
- Liaise with all committee sub-structures and college level committees / working groups.
- Collaborate with the Chair on a monthly basis in relation to all day-to-day operational issues.

Committee Members

- Members will have university-community engagement interest and/or responsibilities.
- Members will be the key liaison between the committee and the SPH.
- Members will Champion Civic and Community Engagement within the SPH.

Conduct of Business

Agendas

The agenda will take full account of the issues and the concerns of all committee members. Agendas should be forward looking and concentrate on strategic matters. No individual committee member will have precedence over another and it will be the responsibility of the Chairperson (and deputy chairperson) to ensure that all members have equal opportunity to shape the direction of the activities. Agendas will be forwarded to members in advance of meetings to allow for their input.

Meetings

The committee will meet no less than four times a year. Two additional meetings can be held at the committee's discretion. The committee will organise its work to ensure that it makes the most effective use of the time, skills, and knowledge of members. The diverse range of skills, experience and knowledge of the members, Chair and Deputy Chair will be employed to contribute to the effective running of the initiative.

Resolution of disputes

The committee and individual members should act according to high ethical standards and ensure that conflicts of interest are properly dealt with.

Members must ensure that no conflict of interest arises between their personal and professional roles and those of the initiative. Members should identify and promptly declare any actual or potential conflicts of interest affecting them.

In so far as possible, members will seek to make decisions by consensus. Where consensus is not possible, disagreement should be resolved as close to the point of conflict as possible. The procedure for resolving disputes among members is as follows:

- in the first instance, a full discussion should be conducted around the area of dispute, allowing all members to set out their views;
- in recording the discussion, the relative positions taken should be clearly recorded; if a consensus view is reached, this should also be clearly recorded;
- if consensus is not reached after a reasonable period of debate, a formal objection to the matter for decision should be made to the Chair;
- the matter will then be deferred to the next meeting;
- a special meeting of the committee may be convened in the event of an extended period between scheduled meetings or if further delay is problematic; during this intervening period, attempts should be made to reach a compromise acceptable to all parties – either facilitated by the Chair or independently depending on the nature of the issue to be resolved;

- should compromise not be possible, the matter will be discussed again at the subsequent scheduled meeting; if disagreement still prevails then, having had a further full and open debate by all partners, the matter will be put to a vote;
- in voting, a member should consider whether the issue in question directly affects the SPH.

External relations

The committee via its Chair, Deputy Chair and external members, will serve as a point of contact for civic and community engagement within SPH. The Chair and Deputy Chair will ensure coordination and information sharing with the structures and officers supporting civic and community engagement within the College of Medicine and Health and the university.

3. Community Engagement Plan Implementation

The SPH Executive Committee will be presented with and review the implementation plan for the initiative on a yearly basis and will provide oversight and support to the implementation of the work programme.

Standing order items at CCEC committee meetings will include update on the initiative's specific strands, sub-structures, external relations and the monitoring and evaluation process for the initiative.

In the period between meetings the Chairperson will be in contact, as necessary, with individual members, and other stakeholders as s/he considers necessary.

4. Review process

For the initiative to remain effective, the SPH Executive Committee may from time to time conduct strategic review of all aspects of the initiative's work and functioning. This will ensure that:

- the needs for which the initiative was set up still exist, and its objects as set out in the governing agreements remain relevant to those needs;
- the initiative is continuing to meet those needs, and remains fit for purpose; and the needs are being met in the most effective way.

Reviews should include:

- the initiative's governing agreements, goals and purposes;
- mechanisms for performance reporting;
- sub-structures, if initiated, e.g. sub-committees, stakeholder grouping, advisory body;
- relations with internal and external stakeholders, and arrangements for communication and consultation with them.

The CCEC committee should use the results of such reviews to:

- generate a creative and innovative approach to the initiative's development;
- inform its strategic planning;
- further develop collaborative work with internal and external stakeholder organisations to deliver the best possible outcomes from the programme of work;
- create a positive impact on the overall effectiveness and governance of the initiative.

Where possible, the committee should be open with all stakeholders about the results of such reviews and indicate clearly what steps they intend to take in response.

Community Engaged Activities supported by the Committee

- Pilot Collaborative Transition Year Programme in October 2023 in conjunction with BSc Sports Studies and Physical Education.
- Collaboration with the Department of Public Health, Health Service Executive South South-West Group in the facilitation of the Safe Patient Care conference 23rd June 2023.
- Facilitation of meeting spaces for Community Organisations e.g. Education event regarding a newly developed clinical pathway for sexual assaults when they occur at large scale events/concerts in association with HSE Emergency Management and the SATU (Sexual Assault and Treatment Unit) in SIVUH - 25th May 2023, 4th April 2024.
- Support for Local Economic and Community Plan (LECP) development at Futures Workshop as a Rapporteur 18th April 2023 in association with UCC CCEC – Local Economic and Community Plan 2024 – 2030.
- Ongoing collaboration between community groups and MPH research projects.
- Revision to ToR in April 2024 to increase membership from 10 – 14, to increase undergraduate student representation to two and to include research representation from Research Assistant / Post Doctoral Researchers.

Civic and Community Engagement (CCE) Report - School of Public Health Away Day 1st June 2023

The aim of the presentation and engagement at the School of Public Health Away Day was to focus on the aims three and four of the Terms of Reference, focussing on a localised strategic and implementation plan.

SPH staff were provided with Learning and Teaching and Research case studies and asked to identify CCE related SPH strengths, weaknesses, and challenges. Overall strengths and weaknesses within the SPH related to CCE were identified are detailed in Figure 1.

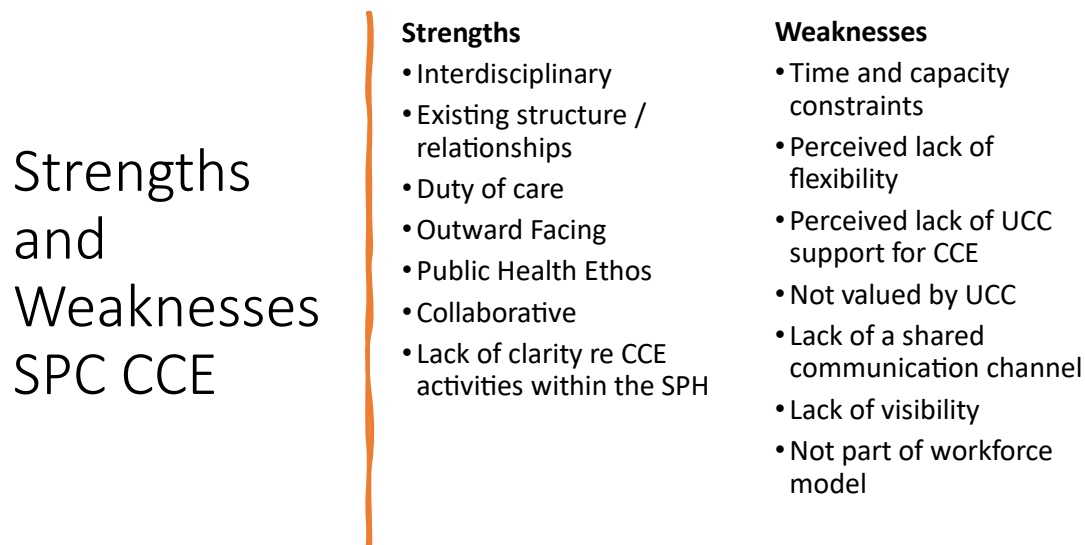


Figure 1. Strengths and Weakness Identified related to Civic and Community Engagement within the SPH

Challenges related to Engagement were identified as:

- Alignment of values between SPH and community collaborators is essential.
- Establish what is the intent of the engagement at the start of the process.
- To avoid becoming a consultancy service.
- Establish recognition for CCE work being facilitated by staff members.
- Factor CCE into future workload models.
- Prioritisation of CCE within the SPH
- There was a perceived lack of guidance related to how CCE can be established.

Teaching Activities and CCE:

This includes consideration of student projects and work placements, Table 1

Table 1. Strengths and Weakness related to Teaching Activity and CCE

Strengths	Weaknesses
Existing teaching capacity	Limited Resources due to conflicting commitments
Ongoing CCE collaborators and projects	Gaps in existing expertise
Community – Academic Research Links (CARL) initiative	
UCC Supports: Office of the Vice President of Global Affairs	

Research Activities and CCE:

Consistent feedback from staff members that alignment of SPH values with community organisations is essential to successful research collaborations. Perceived strengths and weaknesses related to research activities are presented in Table 2.

Table 2. Strengths and Weaknesses related to Research Activity and CCEC

Strengths	Weaknesses
Relevant applicable services within UCC	Lack of or limited capacity
Experienced researchers within SPH	No protected time to support engagement and collaborative research
	Lack of guidelines and structure for community engagement
	Challenges of prioritisation

Emerging Actions:

- Establish what we are currently doing.
- Consider strategic priorities.
- Engage with community collaborators and bring them into UCC.
- Determine intent alignment, value, and benefit of collaborations.
- Make collaborations and SPH staff expertise visible to all.
- Educate students and staff regarding CCE.
- Establish support with in SPH, CoMH and UCC.
- Establish guide / Terms of Reference for CCE projects.
- Possible regular CCE “Impact Report” to share work / achievements.

Actions to Date:

- Approved ToR and support from UCC CCEC – revision 2024 to increase membership to 10 from 14.
- Establishment of the Committee.
- Creation of a standard email and administrative support for SPH CCEC.
- Compilation of SPH CCEC Report 2021 - 2024
- Engagement in projects;
 - Supporting external meetings e.g. Health Service Executive.
 - Supporting University College Cork CCEC with Participatory Research.
 - Membership on College of Medicine and Health CCEC.
 - Development report of CCE activities.
 - Engagement with SPH colleagues at the 2023 Away Day.
 - Development and implementation of formal Transition Year Placements for secondary school students (2023 – 2024).

School of Public Health Staff Civic and Community Engagement Activities

Table 3. School of Public Health staff CCEC activities. Mapped to the following engagement categories: Community Engaged Research, Community Engaged Learning and Public Engagement.

Please note activity descriptions are brief and are mapped based on information submitted. Some activities may map to more categories than included in this report.

Staff Member Name	Community / Civic Organisation- Partner Name	Details of Engagement	Duration of Engagement	Additional Information	Engagement Category
Ella Arensman	iFight Depression				Public Engagement
	EAAD Best	Gatekeeper training with: Clergy GP trainees Prison Officers	April 2023 – half day May 2023 – half day November 2023 – full day		Community Engaged Learning
	MENTBEST	Stakeholder meeting	April 2024		Community Engaged Research
	Port of Cork	Meetings with Cork City Council to discuss suicide prevention and solutions across the city/waterways			Community Engaged Learning / Public Engagement
	Cork Healthy Cities				Public Engagement
	Healthy Campus – Charter and Framework Ireland	Member of the Healthy Campus Steering Committee	2023 to date		Public Engagement

Staff Member Name	Community / Civic Organisation- Partner Name	Details of Engagement	Duration of Engagement	Additional Information	Engagement Category
Ella Arensman	An Garda Siochana	Advisory role and development and implementation of systematic approach to investigating cases of suicide and murder-suicide	Ongoing		Community engaged research and learning
	World Health Organization	Advisory role and technical support for countries in developing self-harm/suicide surveillance systems and reviewing national suicide preventions strategies.	Ongoing		Community engaged research and learning
	Memberships	<ul style="list-style-type: none"> -Co-Director WHO Collaborating Centre for Surveillance and Research in Suicide Prevention -College of Presidents of the International Association for Suicide Prevention -Vice =President of the European Alliance Against Depression -National Cross-Sectoral Steering Group for Connecting for Life -Steering Group for Connecting for Life Cork and Kerry -Advisory Panel for the Psychological Autopsy Study of Railway Suicides in the UK. 	Ongoing		Community Engaged Learning / Public Engagement

Staff Member Name	Community / Civic Organisation- Partner Name	Details of Engagement	Duration of Engagement	Additional Information	Engagement Category
Ella Arensman	Memberships	<ul style="list-style-type: none"> -Working Group Mental Health Triage Audit and Research Committee -Working Group Research and Audit – National Clinical Programme for the Assessment and Management of Patients presenting to Emergency Departments following Self-Harm -Steering Group of A Psychological Autopsy Study of Suicide Deaths among Children and Adolescents aged 10-20 years in The Netherlands -Advisory Group for the National Suicide Prevention Programme in Germany. 			Community Engaged Learning / Public Engagement

Staff Member Name	Community / Civic Organisation- Partner Name	Details of Engagement	Duration of Engagement	Additional Information	Engagement Category
Ella Arensman	Memberships	-Suspected Suicide Notification and Response System Advisory Group -CSP Liaison Group for Suicide Mortality Statistics.			Community Engaged Learning / Public Engagement
	Cork Healthy Cities				Public Engagement
	Healthy Campus – Charter and Framework Ireland	Member of the Healthy Campus Steering Committee	2023 to date		Public Engagement
Edel Burton	Cork Stroke Support Group	Stroke survivors offered Patient and Public Involvement input into my systematic review on the impact of the COVID-19 pandemic on prehospital care for suspected stroke and TIA in adult patients.	Started in October 2021 – present day	Currently working on a joint output from the systematic review suitable for a general audience	Community Engaged Research
	National Ambulance Service Clinical Directorate	8-week SPHeRE national placement here from March – May 2022. The Clinical Directorate have been involved in my PhD studies since January 2022, as expert stakeholders, in analysis and dissemination.	January 2022 – present day	Since June 2022 the Clinical Directorate and UCC came to an agreement about offering student placements for BSc, MPH and PhD students. Dissertation topics and co-supervision may also be provided by the NAS clinical directorate.	Community Engaged Research and Learning

Staff Member Name	Community / Civic Organisation- Partner Name	Details of Engagement	Duration of Engagement	Additional Information	Engagement Category
Susan Calnan	Cork/Southern Regional Drug & Alcohol Taskforce	Attendance at strategy group meetings; research collaboration	Ongoing	Original point of contact was Dr Martin Davoren/Michael Byrne; SC continues to maintain this contact.	Community Engaged Research
Mary Cronin	Traveller Visibility Group (TVG)	Research partnership with TVG, Prof Fergus Shanahan & colleagues in APC Microbiome to survey Traveller accommodation & microbiome health in Cork city & county.	2023- ongoing	Project involves 14 Traveller peer-researchers gathering social & epidemiological data from approx. 600 families using a co-designed online survey tool. UNIC4Engaged Research & SFI funded	Community Engaged Research
	Traveller Visibility Group (TVG)	Research partnership with TVG, Prof Fergus Shanahan & colleagues in APC Microbiome (i) disseminated findings of the Traveller Microbiome study, and (ii) co-created a research agenda to address priority issues for the Traveller community.	2020-2022 – SFI funding	The partnership is planning further research related to Traveller Microbiome Health	Community Based Research Dissemination
	HSE Cork Kerry Traveller Health Unit (THU)	Invited member of the THU committee; first academic member	2024 - ongoing	The THU is an inter-agency committee through which Traveller organisations and HSE departments work in partnership to take actions to improve Traveller health determinants and health services	Public Engagement Inter-sectoral working to implement national & regional strategies

Staff Member Name	Community / Civic Organisation- Partner Name	Details of Engagement	Duration of Engagement	Additional Information	Engagement Category
Mary Cronin	College of Medicine & Health representative to university CCE structures / offices Co-Chair of CoMH CCE Committee		Ongoing since 2018 2023 - Present	CCE strategic development & capacity building in UCC & CoMH	Community Engaged Research and Learning and Public Engagement
	Cork Healthy Cities	Co-authored chapter on the Community sectors involvement in Cork Healthy Cities(CHC).	2022-23	For a 10-year anniversary publication, at invitation of CHC Co-ordinator, (ISBN-978-1-9163790-8-4).	Community Based Research & Dissemination
	College of Medicine & Health representative to university CCE structures / offices Co-Chair of CoMH CCE Committee		Ongoing since 2018 2023 - Present	CCE strategic development & capacity building in UCC & CoMH	Community Engaged Research and Learning and Public Engagement
	Cork Healthy Cities	Co-authored chapter on the Community sectors involvement in Cork Healthy Cities(CHC).	2022-23	For a 10-year anniversary publication, at invitation of CHC Co-ordinator, (ISBN-978-1-9163790-8-4).	Community Based Research & Dissemination

Staff Member Name	Community / Civic Organisation-Partner Name	Details of Engagement	Duration of Engagement	Additional Information	Engagement Category
Sinead Creedon	Q Community	Active Member of Special Interest Group (SIG): Quality Improvement and the wellbeing of the workforce. Active Member of SIG: Coaching Improvement		A self-organising space where members can engage, collaborate, share links and resources which support wellbeing for individuals and teams working in health and social care. The group aim is to support other Q members and organisations to embed a coaching model and approach to quality improvement at a local level.	Public Engagement
	Continuous Improvement Action Network UCC	Active Member		New action network group set up in UCC where people from all departments volunteer to come together regularly to generate ideas for innovative and improvements together as part of a supported environment.	Public Engagement
Colette Cunningham	NAWA-Medical University Gdansk, Poland	NAWA, Polish National Agency for Academic Exchange. Team lead-Medical University Gdansk/ ASPHER Project 2023 – May 2024 Title: Public health education and pandemic challenges Aim: To create and facilitate a community of public health schools that provides mutual teaching excellence support.	18 months	Project partners: Maastricht University, Netherlands EHESP School of Public Health, France Andrija Stampar School of Public Health, Croatia Institute of Public Health (ISPUP), University of Porto, Portugal Jagiellonian University Institute of Public Health, Krakow, and multiple other academic institutions, Poland.	Community Engaged Learning at University level Public Engagement

Staff Member Name	Community / Civic Organisation- Partner Name	Details of Engagement	Duration of Engagement	Additional Information	Engagement Category
Colette Cunningham	UNIC - UNIC, the European University of Cities in Post-Industrial Transition.	In partnership with Koç University Istanbul, for the project R-PEACE (Research on Promoting Peace Language and Communication Excellence in Healthcare Settings)		This collaborative project between Koç University School of Medicine, Department of Public Health, Istanbul & School of Public Health, University College Cork, Ireland aims to bring a multidisciplinary team from public health to social sciences and arts under the collaboration of two UNIC universities, Koç University and University College Cork.	Public Engagement
	WFPHA – World Federation of Public Health Associations	Co-Chair of WFPHA Working Group on Public Health Emergencies and Disasters	May 2023 - Ongoing	The group focuses its attention on human health effects of emergencies and disasters (both natural and man-made) and helps shape global policies.	Public Engagement
	ASPHER – Association of Schools of Public Health in European Region	Member of Task Force Groups 1.War, Conflict and Peace 2.Public Health Emergencies Task Force 3.Expert panel for WHO-ASPHER CCP – Core Competency Programme	2022 and ongoing 2022 and ongoing 2023 and ongoing	Focuses on three key areas: 1) Scientific advisement; 2) Neighbouring countries and refugee context; 3) Training and broader academic context The ASPHER Covid-19 Task Force health emergencies of concern, ASPHER Public Health Emergencies Task Force. The CCP- Core Competencies Programme is currently revising the Core Competencies for public health professionals and practitioners.	Public Engagement

Staff Member Name	Community / Civic Organisation- Partner Name	Details of Engagement	Duration of Engagement	Additional Information	Engagement Category
Colette Cunningham	West Cork Development Partnership	2022- immediate support for Ukrainians in Bandon – help re-education, work etc. and general organisation for the town.	2022		Public Engagement
	Methodist Church Bandon – Foodbank	Set up and organisation of Foodbank for Bandon. Collection of food from local grocery shops.	6 months		Public Engagement
	This is Bandon	Community-based group that organise community events for Bandon area.	Since 2020 – ad hoc basis.		Public Engagement
Christie Godsmark	Irish Climate and Health Alliance	I sit on the steering committee of the alliance as one of the School of Public Health representatives.	I have been active within the alliance since January 2020 and was asked to join the steering group in May 2022	https://climateandhealthalliance.wordpress.com/	Public Engagement
Janas Harrington	Cork Food Policy Council	Chair	In position as Chair since 2019	http://corkfoodpolicycouncil.com/	Public Engagement
	GAA National health & wellbeing Committee	Member since 2014, Chair since 2020	2014-present	https://www.gaa.ie/my-gaa/community-and-health/	Public Engagement

Staff Member Name	Community / Civic Organisation- Partner Name	Details of Engagement	Duration of Engagement	Additional Information	Engagement Category
Janas Harrington	St Finbarrs GAA Healthy Club Team	Chair	2012-present	https://www.gaa.ie/my-gaa/community-and-health/healthy-club/	Public Engagement
Zubair Kabir	Alcohol Action Ireland (AAI)	AAI ad SPH collaborated on two successful Irish Research Council New Foundations Grants (2020 & 2021)	2020 - 2021		Community Engaged Research
	Cork Islamic Culture Centre (CICC)	Engagement with local Muslim community	Ongoing since October 2018	Facilitating scientific projects among the local Muslim community Facilitating youth summer camps on substance abuse Liaising with Community Garda to engage youths and the Muslim community in community awareness programs	Public Engagement
	UCC Healthy Campus Action Group on Drugs, Alcohol & Tobacco.	Chair of this Group	2024		University Community based Public Engagement
Ali Khashan	Kilimanjaro Regional Medical Office	We have a project in the Kilimanjaro Region in Tanzania where we developed a digital health system to replace the current paper-based system in the maternity units.	Three-year project	We work with the Regional Medical Office to ensure our work meets their local needs.	Community Engaged Research

Staff Member Name	Community / Civic Organisation- Partner Name	Details of Engagement	Duration of Engagement	Additional Information	Engagement Category
Caleb Leduc	PSYCHED	I serve on the steering group for PSYCHED, an initiative of Cork Healthy Cities and Counties, supported by Healthy Ireland, Cork City Council, Cork County Council, the Health Service Executive, University College Cork and community workplace partners.	August 2022 to present	I help plan, develop and deliver activities and workshops to stimulate conversation that promotes better understanding of mental health and wellbeing in the workplace. Also assist with the Annual PSYCHED celebration event which recognises companies across Cork County for their efforts at promoting mental health in their workplaces.	Community Engaged Research and Learning
Karen Matvienko-Sikar	<ul style="list-style-type: none"> Irish Motor Neuron Disease Association Epilepsy Ireland Parkinson's Association of Ireland Irish Dementia Working Group Chron's and Colitis Ireland Cystic Fibrosis Ireland Cork Sexual Health Centre Fighting Blindness 	I engage with these groups in an academic capacity in the BSc Medical and Health Sciences Programme. This engagement involves liaising with partner group representatives as well as patient representatives for these groups, who speak with BSc Medical and Health students about the experience of advocating for/living with various health issues and conditions. I and my colleague on the programme Dr Cian McCafferty, have ongoing engagement across both Semesters with these groups and with the students as they discuss relevant issues.	Annual recurring event, each group meets with us and the students twice per annum.	Have listed the groups together as this comes under the BSc Medical and Health Sciences Small Group Learning sessions but can revise to list them individually as is needed.	Community Engaged Learning

Staff Member Name	Community / Civic Organisation- Partner Name	Details of Engagement	Duration of Engagement	Additional Information	Engagement Category
Karen Matvienko-Sikar	<ul style="list-style-type: none"> • Croí Heart and Stroke Charity • All Ireland Institute of Hospice and Palliative Care 	Engagement with Community Groups to support Community based learning			
Monica O' Mullane	Cork Healthy Cities	Vice Chair & Steering Group member; co-founder of Cork Healthy Cities in 2008-2009	From 2008-2010 (was in Slovakia 2010-2018); on Steering Group again since 2019 until present day	Published co-edited book this year (2024) celebrating the work of Cork as a Healthy City (ISBN-978-1-9163790-8-4) Cork Healthy Cities sits on my project HIA-IM Public Involvement Consultation group. My project HIA-IM involves doing a HIA on the Cork city development plan, which is an action within the Cork Healthy Cities action plan 2020-2030 , therefore meeting or addressing this action.	Community Engaged Learning and Research
Ivan Perry	NICHE (North Inner City Community Health Development Project	Board Member and Board Chair	Board Member since 1999 and Board Chair since 2018	Large community health development with multiple projects and responsibility for the management of a creche and family centre. Significant commitment with monthly board meetings and weekly interactions with staff on operational issues.	Public Engagement

Staff Member Name	Community / Civic Organisation- Partner Name	Details of Engagement	Duration of Engagement	Additional Information	Engagement Category
Emmy Racine	Family Carers Ireland All Ireland Institute for Hospice and Palliative Care Inclusion Ireland Cork Healthy Cities	I work closely on an ongoing basis with these organisations as they sit on PPI Ignite Network@ UCC local partner committee. We work together to build capacity for high-quality PPI in the University, within their organisations and amongst their members and communities. We work together to identify PPI education and training needs and co-deliver PPI workshops and training. Each year we support a number of Summer Students to gain experience working on a PPI related project in these organisations.	2020-Present		Community Engaged Learning and Research
	PPI Ignite Network Local and National partner organisations (see list here)	As a PPI Ignite Network lead site, we work collaboratively (directly and indirectly) with ten National partner organisations and over 50 local partner organisations.	2020- Present	We facilitate PPI processes within these organisations and support researchers and students to work collaboratively and foster mutually beneficial relationships.	Community Engaged Learning and Research
	Individual PPI Contributors	I work closely with approximately 15 individual PPI contributors to build capacity for high-quality PPI in health and social care research in Ireland.	2016- Present	These contributors come from different walks of life and have different lived experiences incl. living with chronic disease, lower-socioeconomic backgrounds, intellectual disability, caring responsibilities etc.	Community Engaged Learning and Research

Staff Member Name	Community / Civic Organisation-Partner Name	Details of Engagement	Duration of Engagement	Additional Information	Engagement Category
Maria Roura	Niche Community Health Project (NICHE)	Member of the Niche Board of Management	April 2021 – April 2023		Public Engagement
Maura Smiddy	Infection Prevention Society	Coordinator of the Irish Branch of the Infection Prevention Society (IPS)	Since November 2019 - 2023	The vision of the Infection Prevention Society charity is to be a leading influence on Infection Prevention and Control (IPC) practice at a local, national, and international level by 2024 by informing, promoting, and sustaining evidence-based infection prevention policy and practice to create a health and care system where no person's health and wellbeing is harmed by preventable infection. Infection Prevention Society (IPS) For Health Professionals	Public Engagement
		Communications Officer for the IPS Research and Development Committee	May 2021 - 2023		Public Engagement
		Chairperson of the Infection Prevention Society Research and Development Committee	May 2023 - Ongoing		Community Engaged Research
	Department of Public Health, Health Service Executive South South-West Group	Collaborative engagement and facilitation of the Safe Patient Care conference. Collaborative engagement supporting student site visits	2012 – 2019, 2023 2023 - Present	This conference aims to facilitate education in infection prevention and control and health protection for healthcare workers.	Community Engaged Learning

Staff Member Name	Community / Civic Organisation- Partner Name	Details of Engagement	Duration of Engagement	Additional Information	Engagement Category
Michelle Syron	Cork Healthy Cities	<p>Member of Cork Healthy Cities steering group; attend approximately 6 meetings per year.</p> <p>In 2022, I co-authored a chapter of Cork Health Cities book: Green Spaces for Health, (ISBN-978-1-9163790-8-4).</p>	Ongoing	<p>Liaise between steering group and school staff (e.g. student/staff research collaborations).</p> <p>In 2021, I organised five of UCC's Community Week events on behalf Cork Healthy Cities and UCC's Civic and Community Engagement office</p>	Public Engagement

Acknowledgements and Glossary

Acknowledgements:

Thank you to our Community Partners, Committee Members and Staff of the School of Public Health for your support and contributions to this report. This report provides a brief overview of the community engaged activities within the School of Public Health. It is limited to the information shared with the Committee for the purpose of the report and the Committee acknowledge that School of Public Health staff may be engaged in additional community engaged activities not included here.

Glossary:

Community:

- *“A range of public research stakeholders, including public or professional service and product users, policy makers, civil and civic society organisations (CSOs) and actors”* (Engaged Research: Society and Higher Education Working Together to Address Societal Challenges, Campus Engage, 2017).

Community Engagement:

- Collaboration between universities and community partners to exchange, develop and generate knowledge, research and mutually beneficial supports to the benefit of society (Carnegie Community Engagement Classification, 2020)
- How universities engage with and meet *“societal needs in partnership with their external communities”* (Farnell et al. page 5, 2020).

Community Engaged Learning:

- *“Seeks to engage and accredit students, within the curriculum, for working in partnership with civic and civil society organisations (CSOs) to act on local societal challenges”* (Campus Engage (2018 – 2020), page 9).

Community Engaged Research:

- *“Research approaches and methodologies that share a common interest in collaborative engagement with the community. It aims to improve, understand, or investigate an issue of public interest or concern, including societal challenges. Engaged research is advanced with community partners rather than for them”* (Engaged Research: Society and Higher Education Working Together to Address Societal Challenges, Campus Engage, 2017).

Public Engagement and Involvement:

- Involves the University staff / students, *“facing outwards and connecting as widely as possible to communicate the value of learning and research and to leverage institutional knowledge and resources for social good”*, (Campus Engage (2018 – 2020), page 11).

References:

Carnegie Foundation for the Advancement of Teaching Elective Community Engagement Classification (2020). First-Time Classification Documentation Framework. [carnegie-classification-framework.pdf](#) (Accessed 141124).

Engaged Research Framework (2022). Campus Engage, Irish Universities Association 48 Merrion Square Dublin 2. [Guide-IUA-Engaged-Research-Framework-2022 V7-11.pdf](#) (Accessed 141124).

Campus Engage (2017). Engaged Research: Society and Higher Education Working Together to Address Societal Challenges, Campus Engage Irish Universities Association, Dublin 2.

Campus Engage (2018 – 2020). Measuring higher education civic and community engagement a support framework. Campus Engage, Irish Universities Association, Dublin 2, [MEASURING-HIGHER-EDUCATION-CIVIC-AND-COMMUNITY-ENGAGEMENT.pdf](#) (Accessed 171124).

Equality Diversity and Inclusion (EDI) Unit, UCC. (2024). BELONGING AT UCC: A Strategic Framework and Action Plan for Equality, Diversity and Inclusion (2025 – 2028). [EDIFrameworkENGFINALWebVersion13Nov2024.pdf](#) (Accessed 141124).

Farnell, T., Benneworth, P., Ćulum Ilić, B., Seeber, M., Šćukanec Schmidt. N. (2020). TEFCE Toolbox: An Institutional Self-Reflection Framework for Community Engagement in Higher Education. Zagreb: Institute for the Development of Education. [TEFCE Toolbox.pdf](#) (Accessed 261124).

Galvin, M., O'Mahony, C., Powell, F. and Neville, K. (2017) UCC Civic Engagement Plan 2017-2022. University College Cork, Cork, Ireland. [UCC Civic Engage 2017a.pdf](#) (Accessed 141124).

Israel B, Schulz A, Parker E, Becker A (1998) Review of community-based research: assessing partnership approaches to improve public health. *Annu Rev Public Health* 19:173–202.

Martin, E and IO' Mahony, C. (2013). "Practical approaches to fostering student engagement through community-based research and learning". In Dunne E. and Owens D. (Eds), *The Students Engagement Handbook. Practice in Higher Education*, Bingley UK: Emerald Group Publishing Limited, pp. 557 -587.

United Nations Development Programme (2021). Sustainable Development Goals Strategic Plan 2022 - 2025. United Nations Development Programme One United Nations Plaza New York. [UNDP-Strategic-Plan-2022-2025 1.pdf](#) (Accessed 261124).