



CCAE

X

CORK  
COUNTY  
COUNCIL

COMMUNITY HOUSING  
COMPETITION 2021 + 2022





der Jarshoch: Thuisan

---

# CONTENTS

---

	Contents	03
	Introduction	04
1st Prize:	Aoife Cowman	06
2nd Prize:	Darren O'Connor	07
Highly Commended:		
	Darragh Bairead	08
	Mark Bracken	09
	Emma Bradfield	10
	Lucy Byrne	11
	Acknowledgements	12





# INTRODUCTION

**Year Co-ordinator**  
Declan Fallon

**Design Studio Staff**  
Tara Kennedy  
Una Daly  
Dr Jim Harrison  
Eoin Horgan  
Maroun Tabbal  
Niamh Hurley

**Applied Technology**  
Seán O'Muirí  
Henrick Wolterstorff

**CCAE Workshop**  
Aoife Browne

**Studio Contributors**  
Ailbhe Cunningham  
Linda Horgan  
Martin Scaffolding Ltd.  
Greg Collins  
Shane Jones  
Mary Creedon



**Fig 1.00 (cover)**  
Niamh Hurley, Collage Study.  
Housing

**Fig 1.01 (previous page)**  
Declan Fallon, Panoramic  
Photograph, Sherkin and Cape  
Clear Island

**Fig 1.02 (top)**  
Declan Fallon, Panoramic  
Photograph, Sherkin and Cape  
Clear Island

**Fig 1.03 (bottom)**  
Declan Fallon, Photograph,  
Sherkin and Cape Clear Island  
Signage

**Fig 1.04 (opposite)**  
Declan Fallon, Panoramic  
Photograph, Sherkin and Cape  
Clear Island





Cork County Council and Cork Centre of Architectural Education, CCAE (UCC and MTU) have worked in partnership to investigate design possibilities to rejuvenate inclusive, sustainable, and mixed communities within Cork County over many years.

Our focus has been in preparing student designs for **Community Based, Age Friendly Design, Flexible 'Lifetime' Structures** with a particular focus on **Disabled Awareness Design**.

Within the second semester of Year 2, the overall semester theme is '**People and Place**'. The chosen places of study over the last 2 years have been Cobh '2021', Sherkin Island and Cape Clear Islands '2022'.

The Cobh sites were in heart of the town with significant falls in ground level. Sherkin Island and Cape Clear Island allowed students to consider Age-Friendly and Community based designs within these unique Irish landscapes. Clever use of circulation and landscaping solutions on both sites provided design opportunities to make fully accessible schemes internally and within the community.

The project briefs were to design an Age-Friendly Housing Schemes of 10 (or more) homes. The housing units to be thoughtfully designed and detailed. The overall strategy for the sites were to foster social and sustainable community interaction. Meeting places and safe supervised spaces were key elements of the overall schemes.

The housing projects were a collaboration with the Cork County Architects and the Cork Age Friendly Alliance who attended the key student design reviews. The CCAE are very grateful for the input of these specialist contributors in order to hone students awareness of community based design issues within Cork County.

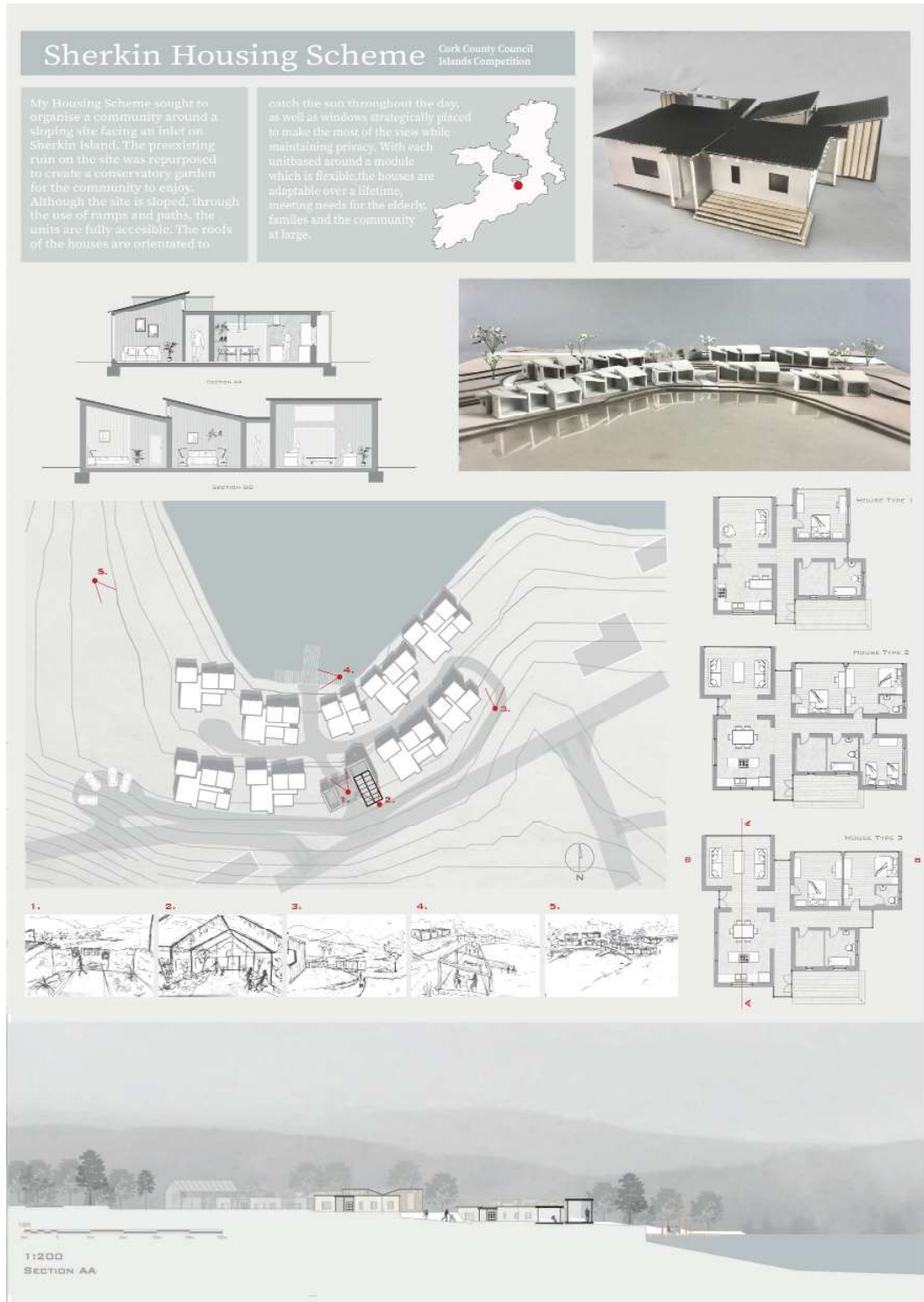
The project was run as a competition with two students being awarded prizes by Cork County Architects for 2021 and 2022.

CCAЕ wishes to thank representatives from **Cork Age-Friendly Alliance** and **UCC's Disabled Awareness** specialists who contributed to workshops and reviews. These groups also took part in the judging of the competitions.

The awards made in 2023 are to **Aoife Cowman** (1st Prize, Sherkin Island '22 Housing and **Darren O'Connor** (2nd Prize, Cobh Housing Scheme '21) This publication focuses on their work along with other 'Highly Commended Projects'.

It is hoped that this publication records the contributions of Cork County Council and the Students of CCAE in their ongoing commitment to rejuvenate sustainable, inclusive, and mixed communities within Cork County.

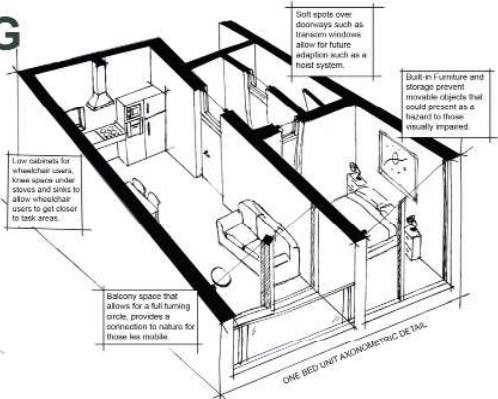




**Fig 1.05**  
Aoife Cowman, 1st Prize, Sherkin and Cape Clear Island Housing Competition Sheet



# COBH HOUSING FOR ALL



Housing for all, is a scheme that examines how housing for the most marginalised in society, is housing for all. Maintaining level access on the sloping site was one of the main problems that was faced. The slope was used to an advantage, the two story drop allowed for entrance points up the sloping street.

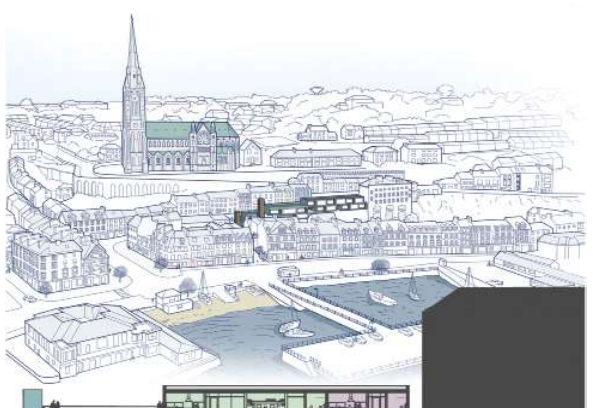
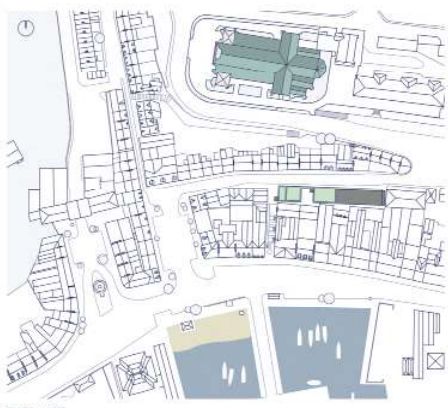


A Modular Plan was employed in the scheme, this allows the placement of the units on the site to be playful, pushing and pulling these modules apart creates intriguing spaces ideal for community interaction. A fully accessible plan was also another key focus of the project. Disabilities can appear in so many ways, accessibility is not just for wheelchair users and elderly, but can range from a pregnant occupant to an injured sports player. However by designing for the most challenging disabilities, one makes a building accessible to all.

Connection to Rahilly st. was vital to the project, the activation of this facade was achieved through walkways and greener. Glimpses of private roof gardens entice passers-by curious as to what else lies beyond.



A covered walkway with recessed bays provide moments for interaction between neighbours, built-in benches allows people with low mobility the chance to take a break or take a well earned fidget before entering their homes. Guarding supports vegetation which provides a nice environment but also provides necessary privacy from the busy road without blocking access daylight.



Connection to Cobh was another key element of my project, looking at the existing roof levels in the sloping streets. Copper cladding was used to connect with the materiality of St. Colman's Cathedral. The lift towers mirror the verticality of the cathedral's soaring bell tower. The gaps between units mimic the nature of the vacant lots in Cobh, quick glimpses out to sea.

Fig 1.06 Darren O'Connor, 2nd Prize Winner, Cobh Housing Competition Sheet



# DARRAGH BAIREAD



**Fig 1.07**  
Darragh Bairéad, Highly Commended, Sherkin and Cape Clear Island Housing Competition Sheet

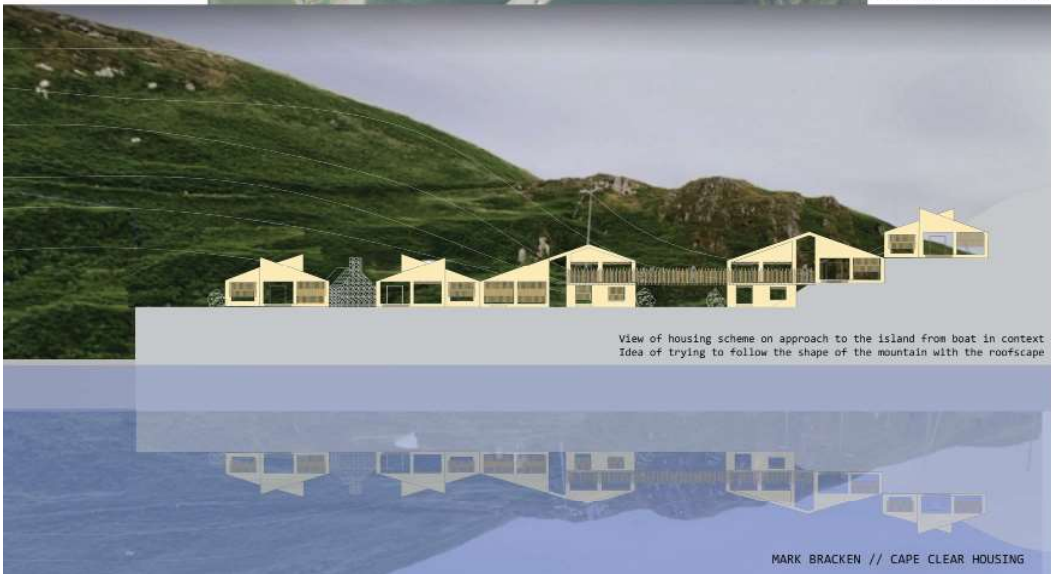
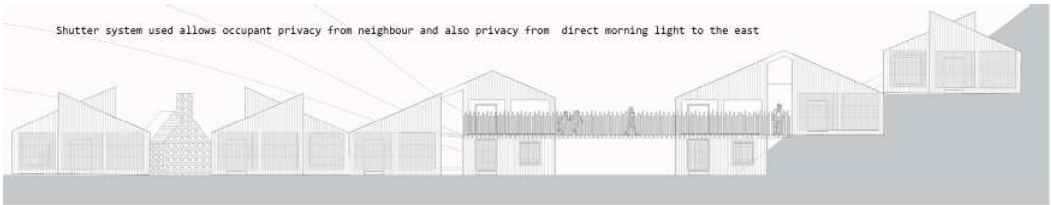


Fig 1.08 Mark Bracken, Highly Commended, Sherkin and Cape Clear Island Housing Competition Sheet





**Fig 1.09**  
Emma Bradfield, Highly Commended, Sherkin and Cape Clear Island Housing Competition Sheet

CAPE CLEAR: ISLAND HOUSING

THE JOURNEY TO CAPE CLEAR CAN BE WILD BUT UPON ARRIVING INTO THE HARBOR COMES A SENSE OF SAFETY AND SHELTER. THE SCHEME FURTHERS THIS STABILITY THROUGH THE PLACEMENT OF THE REPEATING, INTERLOCKING FORMS AS YOU SAIL INTO THE SHELTERED COVE.

SITE ONE, A LOCATION THAT IS VERY SIGNIFICANT FOR FIRST IMPRESSIONS OF CAPE CLEAR, IS A GREAT SETTING FOR MY ISLAND HOUSING. THE SCHEME PLAYS WITH PUBLIC AND PRIVATE SPACES, THAT BRINGS TOGETHER THE COMMUNITY IN ONE LOCATION WITH EXTERNAL VIEWPOINTS OF THE WONDERFUL LANDSCAPE OF CAPE CLEAR AND INTERNAL SPACES WITH FRAMED VIEWS OF THE NATURE OUTSIDE IT.

THE TAILORED MADE HOUSES ARE ALL MADE TO BE AGE AND DISABILITY ACCESSIBLE AND HAVE NO STEPS OR STAIRS IN THE SCHEME. THE HOUSES ARE MADE OF THE CYGNUM PASSIVE 350 TIMBER INSULATED STRUCTURES AND ARE CLAD IN A FOLDED ZINK FACADE, THESE ARE EFFICIENTLY ASSEMBLED AND PERFECT FOR ISLAND CONSTRUCTION. THE ORIGINAL BUILDING ON THE SITE WAS ONCE A FISHERMANS COTTAGE BUT NOW IS A COMMUNITY BASED STORAGE UNIT WITH BIKE RACKS ETC.

OVERALL THE SCHEME PLAYS ON SEQUENTIAL FORMS AND THE PLACEMENT OF NEGATIVE SPACE TO CREATE COMMUNITY HUB IN A BEAUTIFUL SETTING.

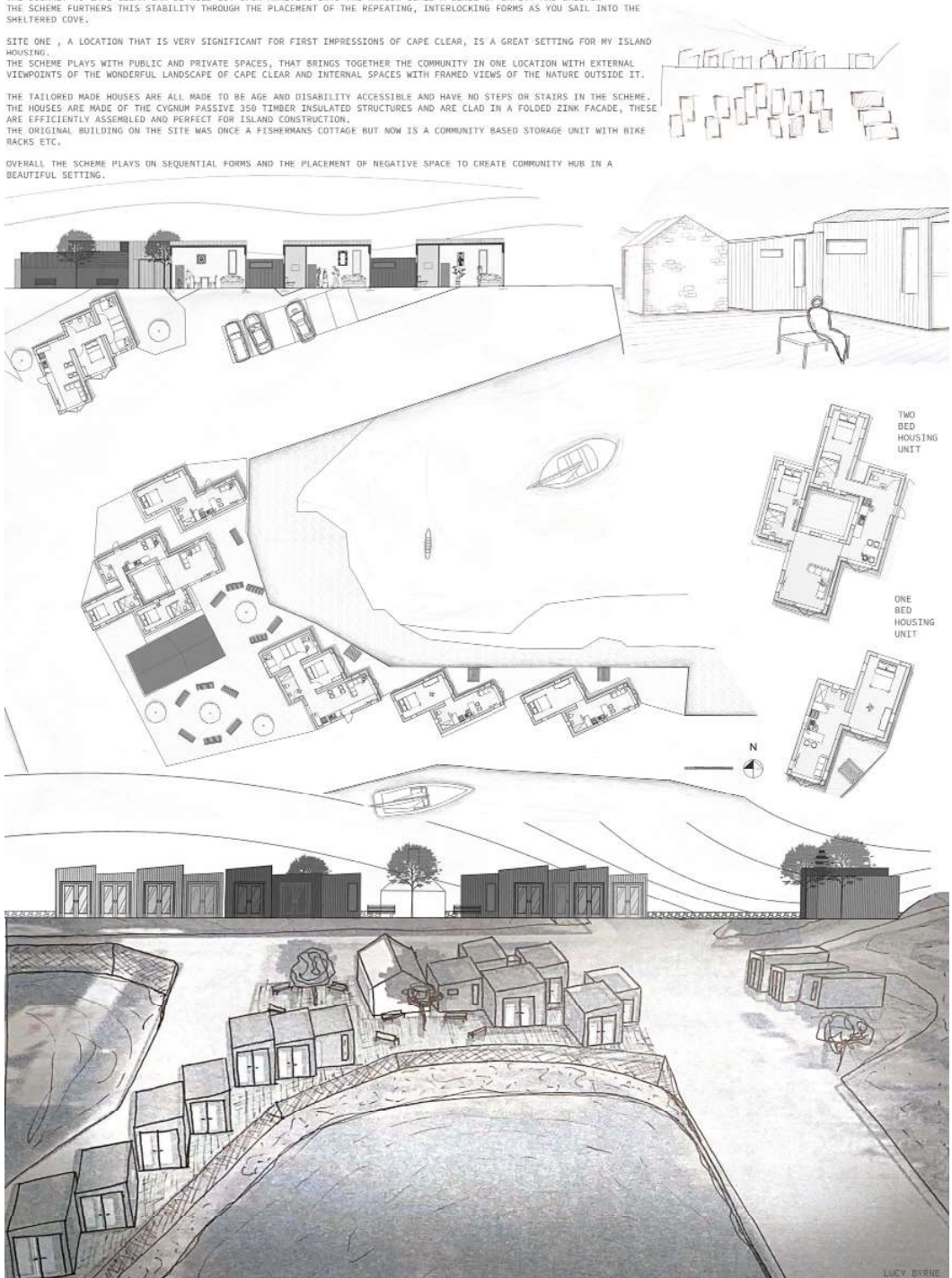


Fig 1.10  
Lucy Byrne, Highly Commended, Sherkin and Cape Clear Island Housing Competition Sheet



# ACKNOWLEDGEMENTS

---

## With Thanks to

**Cork County Council**

**Cork County Council**

**Age Awareness (Domestic)**

**Universal Housing Design**

Greg Collins

Shane Jones

Mary Creedon

Linda Horgan

## **CCAIE Director**

Prof Kevin McCartney

## **CCAIE Senior Executive Assistant**

Gerry McCarthy

## **Year 02 Co-ordinator**

Declan Fallon

## **Publication Co-ordinator**

Niamh Hurley

## **CCAIE**

Cork Centre for Architectural Education

Douglas Street

Cork

Ireland

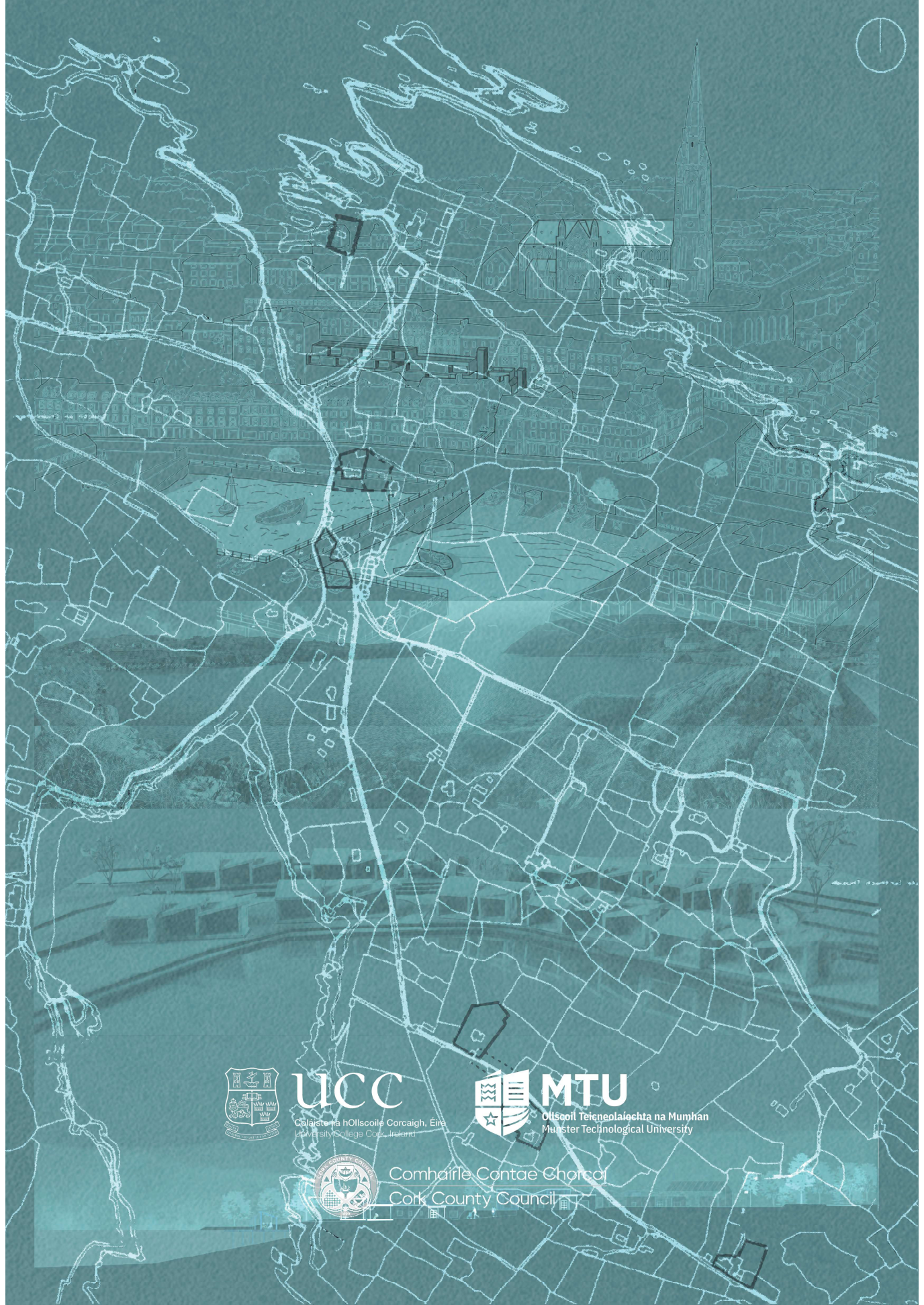
T. +353 (0)21 420 5676

E. [architecture@ucc.ie](mailto:architecture@ucc.ie)

[www.ucc.ie/en/architecture](http://www.ucc.ie/en/architecture)







**UCC**

Coláiste na hOllscoile Corcaigh, Éire  
University College Cork, Ireland



**MTU**

Ollscoil Teicneolaíochta na Mumhan  
Munster Technological University



Comhairle Contae Chorcaí  
Cork County Council