

Buildings & Estates NEWS

Issue 1 | January 2017



navigate stories

Welcome to our Newsletter

1. MaREI's New Headquarters opens at Beaufort Building
2. New Build at Brookfield Health Sciences Complex (BHSC)
3. Largest building on campus – Western Gateway Building
4. Annual Staff and Student Commuting Travel Survey
5. Library Creative Zone – foster group learning and creativity
6. SEAI Awards - Runner Up

Other News



The New Beaufort Building at Ringaskiddy, Co. Cork



BHSC



Western Gateway



Commuter Plan



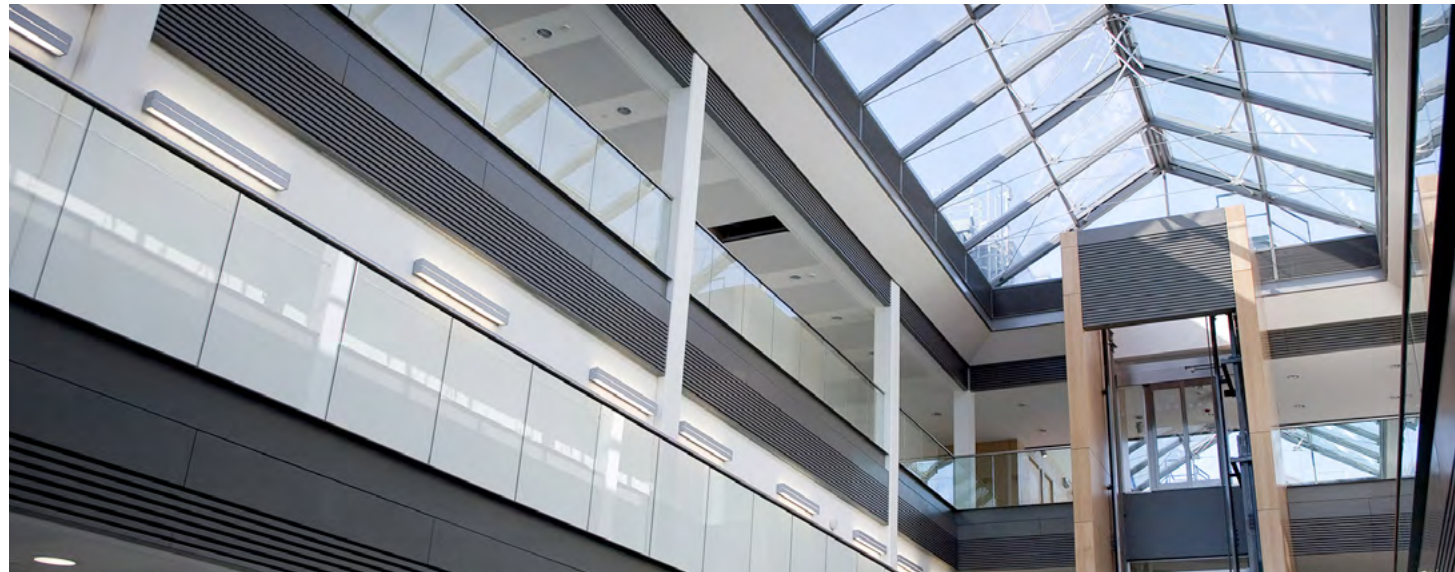
Creative Zone



SEAI Awards

go to first story

For info and submissions email: Buildings&Estates@ucc.ie



WELCOME TO THE BUILDINGS & ESTATES NEWSLETTER

We are delighted to share some of the works that have been undertaken in Buildings & Estates which we have captured in this Newsletter. The variety of work undertaken by the Buildings & Estates staff includes Capital Projects, Minor Works Projects, Grounds, Green Campus and Heritage. We plan to share updates with you on a regular basis through our Newsletters.

If you have any thoughts/feedback we would be very pleased to receive them.

Mr Mark Poland
Director of Buildings & Estates, UCC

mpoland@ucc.ie



New Building at Brookfield Health Sciences Complex (BHSC)

UCC CoMH with strategic partners developed a new build (approximately 2,400m²) at the BHSC site at a capital cost of approximately €7M. The new 2,400m² building at the Brookfield Health Sciences Complex (BHSC) will accommodate the ASSERT Centre and laboratories for the INFANT Research Centre.

The ASSERT (Application of Science to Simulation-based Education and Research on Training) Centre aims to decrease medical error and improve patient care by enabling health professionals and trainees to engage in the deliberate practice of skills to predefined proficiency standards in simulated settings. ASSERT provides world class facilities to train all healthcare professionals which include high fidelity simulation suites, clinical skills areas and a multifunctional laboratory suitable for cadaveric and part task training.

INFANT (Irish Centre for Fetal and Neonatal Translational Research) is a Science Foundation Ireland (SFI) funded research centre based in a number of locations at UCC and CUMH. INFANT is a leading centre for perinatal health care research.





WESTERN GATEWAY

The Western Gateway Building is the largest building on campus at 25,000m² and accommodates Computer Science, the School of Mathematical Sciences, Pharmacology & Therapeutics, Anatomy, Physiology and a Cancer Research unit. UCC's IGNITE Graduate Business Innovation Centre for third-level graduates is also located here. The IT Building is the single biggest project in the University's ambitious €400m capital development programme. It provided much needed new lecture theatres, undergraduate teaching laboratories, research laboratories and a new riverside cafe. It allowed UCC to bring together its successful SFI/PRTL1 funded research groups in IT (eg 4C, CUC,MISL,CEOL,BCRI etc.) www.ucc.ie/en/gateway/

A key feature of the building is the new IT incubation suite which will encourage start-up software development companies. The site is located on the western edge of the campus and was linked by a pedestrian bridge to the completed Brookfield Health Sciences complex. The building positioned UCC at the forefront of international education in key areas and allowed the University to contribute fully to the delivery of Government policy in the area of fourth level education in particular under the Strategy for Science, Technology and Innovation.





BEAUFORT

MaREI's new headquarters at University College Cork's (UCC) Beaufort Building in Ringaskiddy, Co. Cork, was officially opened on the 11th July 2015 by Taoiseach Enda Kenny and represents an investment of €15.2 million from the Irish State and private investment.

The Building covers some 4,700m² across five floors, and has provision for 135 researchers and support staff in offices and across a suite of start-of-the-art test tanks and dedicated workshops. This key national infrastructure will also house the LIR National Ocean Test Facility.

The Beaufort Building, located adjacent to the National Maritime College of Ireland, is a major extension of the University's Environmental Research Institute (ERI) and will be UCC's flagship presence on the IMERC Campus.

The facilities comprise a 2,600m² tank-hall which will house four different wave tanks and a suite of electrical test infrastructure, alongside scientists and engineers engaged in cross-disciplinary research covering a range of fields such as Marine Renewable Energy, Marine and Coastal, and Sustainable Energy Research.



COMMUTING TRAVEL SURVEY

UCC Buildings and Estates have again conducted their annual Staff and Student commuting travel survey in late March 2015. Its results show a confirmation of the overall positive trend to alternative modes, other than the single-occupancy car drive to Campus.

For staff, the latter is down to 55% (from 57% in 2014), with overall car usage (incl. P+R and car passengers) to just over 62% (from 67%). While almost 30% keep fit by walking or cycling to work, bus and train usage continues to rise to now 7.5%.

On the student side, two thirds travel by alternative modes, which would be up to 85% if P+R and lift sharing is included. 50% of all students walk or cycle (up from 46%), which is supported by the large scale offer of accommodation close to UCC.

Cycling enjoys an increasing popularity among students (up to 8%), with its mode share for staff remaining stable on high levels (12%). In comparison, the average share for cycling to work or education in Cork City is around 3%. It's worth noting that only 3 months after their introduction, the public CokeBikes already had a 1% share in staff and student commuting to UCC.

In terms of daily travel, UCC keeps straight on the right track towards a sustainable Green Campus. www.ucc.ie/en/build/commuting



LIBRARY CREATIVE ZONE

The Creative Zone (originally 'Learning Zone') was planned between spring 2014 and summer 2015. Funded by Library it was a collaboration between Students, Library Staff and Buildings & Estates Minor Works Design Team. The project brief was to create a unique space to foster group learning and creativity and to be accessible and open to all students. Builder's work, electrical containment, mechanical ventilation, flooring, furniture and decoration was completed for 'dry' opening in November 2015. The room allows for flexible layouts with options of group meetings, breakout space, seminar seating, lecture podium. It is currently home to UCC Blackstone Launchpad (an exciting international entrepreneurship support initiative) and it is fitted with projector, screen, camera, Wi-Fi, 5x40" TV screens and associated PC's. The official opening is due to take place on 3rd March 2016.



GREEN CAMPUS

STUDENT LED >
RESEARCH INFORMED >
PRACTICE FOCUSED >

Green Campus Reassessment will take place on 5th April. This will be our 3rd major assessment and if successful, UCC will be the world's first campus renew its Green Flag for a second time. The Green Campus programme was the brainchild of UCC students who contacted An Taisce (who run Green Schools programme in Ireland) and worked hand in hand with the Buildings & Estates Office to pilot the programme. The Green Campus programme has seen UCC take significant strides forward in its sustainability. Recycling rates have increased from 21% in 2007 to 80% in 2015. 100% of UCC's energy is provided from renewable energy. The number of staff cycling to work has increased from 6% in 2007 to 12% in 2015. The reassessment will involve an expert panel who will rigorously re-evaluate UCC's performance in this area. They will take a tour of sustainability features around campus, followed by a presentation by committee members and a question & answer session.





SEAI AWARDS 2015 - RUNNER UP

University College Cork Challenges Energy Consumption - Sustainable Design is a key deliverable on existing/expanding campus. This involves End Users taking Responsibility for Usage/Cost. Operational Controls and Strategic Energy Strategy which includes ISO 50001 has assisted UCC in being ranked 2nd in the UI World Green Metric University Rankings in 2014.

In 2015 UCC developed Ireland's first dedicated Energy Research Centre - The Beaufort Building. Staff receive training in their particular areas in regard to Energy Use and Reduction Methods. UCC's programme has created a culture and strategic innovative approach that ensures the future has energy reduction at the forefront of the organisations aspirations.

THE UCC STORY



If you've passed through the West Wing recently you'll have seen a storyboard exhibition about the history of QCC/UCC.

The old noticeboards have been stored and will be refurbished for use nearby or in the hub project building. The Stone Corridor itself has had a lot of work done in it for this project – wall repairs, removal of stray piping and cables, upgrading the lighting and fresh painting. Many thanks to many colleagues in B&E – engineering, maintenance, buildings, supervisory & admin - and to the General Services Duty Officers and security staff who supported it all from day to day.

Initiated as part of George Boole 200, it's designed to communicate our history and identity both to ourselves and to the wider world. Because of the realities of normal use patterns, by both the university community and the wider public(s), it has to tell the story to a very wide audience. Developing the script has been difficult, requiring lots of care to make the text accessible, interesting and as future-proof as possible.

The panels are of the same robust and practical design as those with the ogham and carved stones, making them easy to clean, easy to remove for works and easy to replace if they are vandalised or otherwise damaged. We are planning the addition of two more panels soon - a 'closing' text and one of project credits.

Longer term plans are for the development of a series of panels on the opposite walls about some of the remarkable people in UCC's history.

Michael Holland, University Curator.

We recently replaced our Tractor and Trailer with a much more Environmentally Friendly Electric Vehicle.

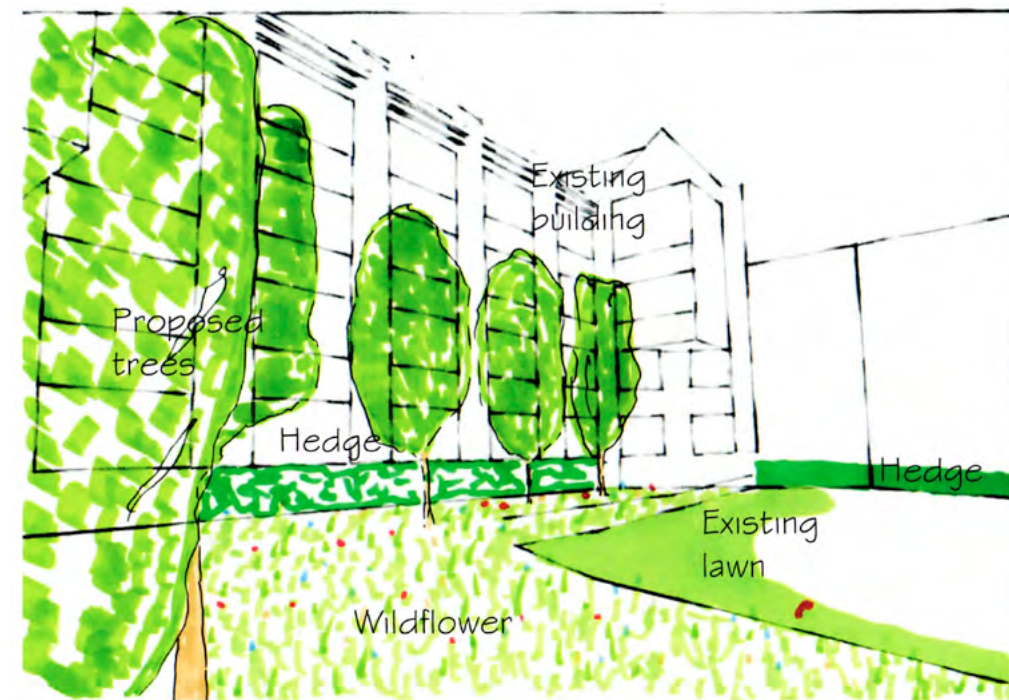


The Annual Tree Survey has been completed which has once again produced an extensive body of work which will have to be planned and carried out during the year.

'No trees were identified as needing Urgent or High priority work recommendations during the survey; on the main campus there were however, **11 trees** identified as Medium Priority and a further **211 trees** recorded as requiring Low Priority work. At the Curragheen site; no trees were identified as requiring any tree surgery works, however a summer re-inspection of the mature Beech tagged 728 was recommended. Overall the tree population of the campus is in fairly good condition, with much good work having been completed by the tree contractors over the last 12 months. Several prominent trees require ongoing work to help prevent the likelihood of storm damage; however damage has been relatively light so far this winter, despite the successive storms.'



Some new planting at Glucksman.



SCHMATIC DRAWING OF WILDFLOWER MEADOW WITH TREES & BACKGROUND PLANTING & BACKGROUND PLANTING

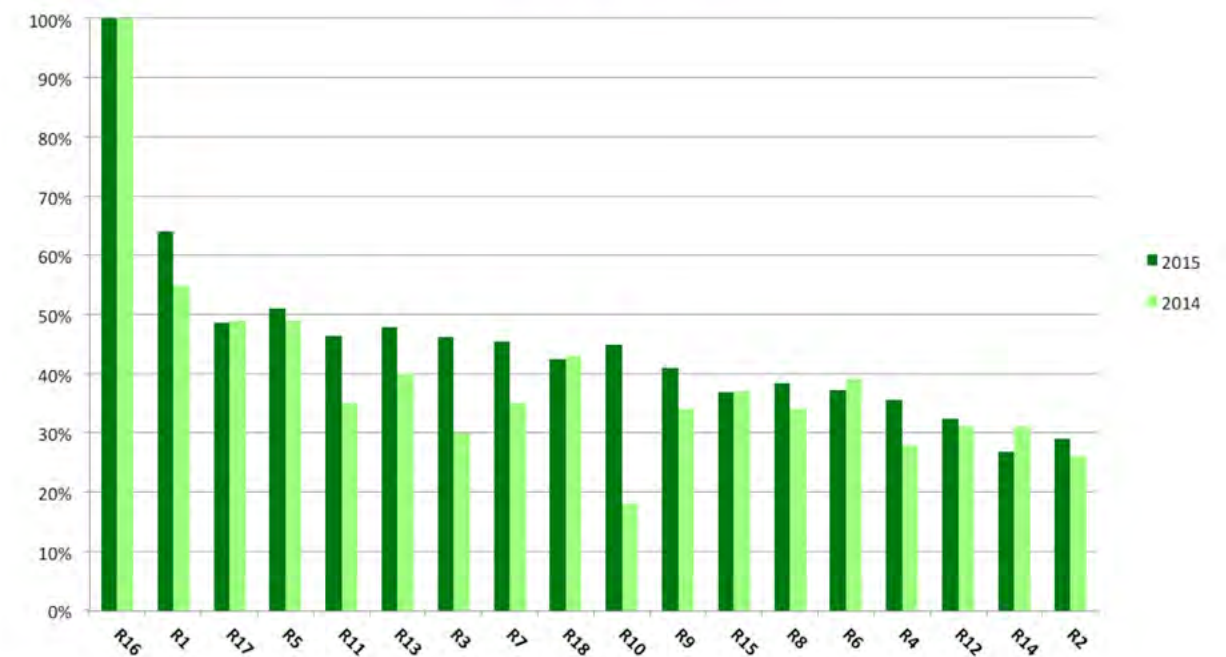
Future Plans: Planned Wildflower Meadow at O'Rahilly.

Waste Activity Report 2015 - UCC

Location	Waste Type	January		February		March		April		May		June		July		August		September		October		November		December		TOTAL	
		Lifts	Tonnes	Lifts	Tonnes	Lifts	Tonnes	Lifts	Tonnes	Lifts	Tonnes	Lifts	Tonnes	Lifts	Tonnes	Lifts	Tonnes	Lifts	Tonnes	Lifts	Tonnes	Lifts	Tonnes	Lifts	Tonnes	Lifts	Tonnes
UCC	General Waste	255	38	300	42	303	44	267	37	251	35	180	27	206	26	175	25	302	33	325	31	317	30	243	26	3,124	392.75
	Waste		15.00		16.63		17.46		14.82		14.02		10.91		10.50		9.82		13.32		11.82		10.50		0	157.10	
	Recovery		22.51		24.94		26.18		22.22		21.03		16.36		15.75		14.72		19.97		17.73		15.75		0	235.65	
	MDR	205	12.48	265	15.27	248	14.99	228	13.85	182	10.94	212	13.06	203	12.43	157	9.55	281	16.51	301	17.50	291	16.61	216	13.28	2,791	166.47
	Food	31	3.1	31	3.12	33	3.09	41	3.83	38	4.63	33	3.1	45	6.25	23	2.54	52	6.73	51	6.27	51	6.35	48	5.3	477	54.31
	Glass	10	2.98	11	2.67	4	0.55	7	1.5	10	0.79	2	1.49	0	0	0	0	7	1.76	2	0.42	1	1.15	0	0	54	13.31
	Cardboard	16	2.68	29	3.89	28	3.99	28	3.45	22	3.73	19	2.51	21	2.78	21	2.29	53	5.43	31	4.04	24	2.8	23	2.69	315	40.28
	CCS	1	3.49	1	10.59	1	2.84	1	8.02	1	8.87	1	7.29	1	21.76	1	8.91	1	7.13	1	11.40	1	2.65	1	17.12	12	110.07
	Clothes Bank	0	0.06	1	0.05	0	0.08	0	0.00	1	0.22	1	0.11	0	0.00	0	0.13	1	0.05	1	0.03	1	0.22	1	0.09	7	1.04
	Grass	1	1.10	1	0.50	1	0.80	1	1.72	1	1.80	1	2.04	1	2.42	1	1.98	1	0.20	1	0.20	1	0.30	1	0.25	12	13.31
	O'Donoghues	5	9.80	1	5.00	1	4.70	1	1.58	0	0.00	1	3.84	4	7.24	2	1.46	0	0.00	3	5.72	4	3.32	0	0.00	22	42.66
	Waste		3.92		2.00		1.88		0.63		0.00		1.54		2.90		0.58		0.00		2.29		1.33		0.00	0	17.06
	Recovery		5.88		3.00		2.82		0.95		0.00		2.30		4.34		0.88		0.00		3.43		1.99		0.00	0	25.60
	Tyndall	1	1.72	1	1.11	1	1.35	1	1.10	1	2.60	1	2.00	1	2.00	1	3.00	1	0.75	1	0.80	1	0.85	1	0.75	12	18.03
	Waste		0.69		0.44		0.54		0.44		1.04		0.80		0.80		1.20		0.30		0.32		0.34		0.30	0	7.21
	Recovery		1.03		0.67		0.81		0.66		1.56		1.20		1.20		1.80		0.45		0.48		0.51		0.45	0	10.82
	Tyndall - MDR	1	1.50	1	2.70	1	2.80	0	0.00	1	1.00	1	2.40	1	2.60	1	1.67	0	0.00	1	2.68	0	1.24	1	1.68	9	20.27
	WEEE/	1	1.90	2	4.90	1	0.75	1	1.56	1	0.95	1	0.43	1	0.68	0	0.00	0	0.00	1	0.24	1	0.85	0	0.00	10	12.26
	Cartridges	1	0.08	1	0.13	1	0.10	1	0.15	1	0.09	1	0.04	1	0.04	1	0.00	0	0.00	0	0.00	0	0.00	0	0.00	8	0.63
	Hazardous	1	1.14	0	0.00	1	0.25	0	0.00	1	1.90	0	0.00	1	1.75	1	1.37	0	0.00	3	0.75	1	0.30	0	0.00	9	7.46
	Total Waste		19.61		19.07		19.88		15.89		15.06		13.24		14.20		11.60		13.62		14.92		13.49		10.80		181.38
	Total Recycling		59.93		72.43		60.05		57.91		57.51		52.34		72.00		45.84		58.23		65.92		52.70		56.61		711.47
	% Recycling		75%		79%		75%		78%		79%		80%		84%		80%		81%		82%		80%		84%		80%



Recycling 2015 v 2014



[back to front page](#)

