



EPINews

Department of Epidemiology and Public Health Newsletter

July 2017

WELCOME

Dear Colleagues,

On behalf of the Department, I would like to thank outgoing Editor of the EPINews, [Emily Kelleher](#), for her hard work and dedication to the newsletter over the last three years. Emily is currently concentrating on completing her PhD and we wish her the very best.

This issue is once again packed full with news, research updates, events and training opportunities. It has been a busy summer so far with many colleagues travelling to seminars and conferences at home and away. Canada appears to be the current hotspot drawing staff and students for international work placements and conferences. [Mr Kieran Walsh](#) completed his international work placement in Ottawa while [Dr Martin Davoren](#) and [Dr Sheena McHugh](#) presented at the third bi-annual Global Implementation Conference in Toronto. [Professor Ivan Perry](#), [Dr Fiona Geaney](#) and [Dr Sarah Fitzgerald](#) attended the Annual Meeting of the International Society of Behavioral Nutrition and Physical Activity in Victoria, BC.

I would encourage you to circulate EPINews among your colleagues and direct any queries or comments to me at r.dennehy@ucc.ie

Rebecca Dennehy

DEPARTMENT NEWS

Congratulations Dr Karen Matvienko-Sikar

Congratulations to [Dr Karen Matvienko-Sikar](#) who was recently awarded a [HRB TMRN Study Within A Trial \(SWAT\)](#) award following successful international peer review. The study will examine if provision of information about a core outcome set increases response rates and attitudes toward trial questionnaire completion.

IN THIS ISSUE

- [Department News](#)
- [Recent Publications](#)
- [Meet...](#)
- [Events and Training Opportunities](#)

CORE TEACHING PROGRAMMES

- [BSc in Public Health](#)
- [MPH Master of Public Health](#)
- [Postgraduate Certificate in Health Protection](#)
- [Postgraduate Certificate in Health Protection \(Online\)](#)
- [MSc in Occupational Health](#)
- [PhD Programmes](#)

The BSc Public Health-Onwards and Upwards

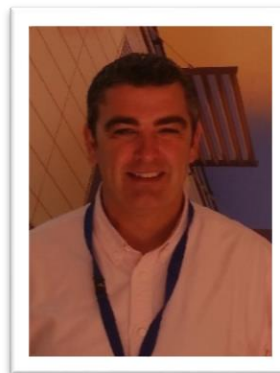
This Academic Year (2016/2017) marked the beginning of a two-year process of significant structural change for the BSc Public Health. The first of these changes is that from September this year the "BSc Public Health" will become the "BSc Public Health Sciences" to flag the scientific nature of the programme to prospective students. This is hopefully the last name change for the degree which started out in life as the "BSc Public Health & Health Promotion". The second change is that 1st year students were able to take elective options ranging from biochemistry, development studies to languages (French, German, Spanish or Irish). Informal feedback from guidance counsellors has been very positive – especially in relation to the availability of language options embedded in a science degree. In addition, the quantity and breadth of elective options for 4th Years has been increased and next year, 2nd and 3rd Year students will also be able to avail of elective options. The electives have been chosen to allow students to follow a particular area of interest such as microbiology or politics over the course of their 4 years with us, as well as availing of the opportunity to expand their disciplinary horizons by studying subjects such as philosophy and/or history. The final change has been the introduction of the option to study abroad for 3rd Year - two students will be spending next year in Maastricht University, Netherlands. The intention is to seek further exchange partnerships with high ranking universities who deliver similar programmes, to provide our students with exciting options to study abroad in Europe and beyond. So it has been, and is, 'all change' for the BSc as we strive to provide our students with a relevant educational experience and our graduates with a brighter future.



Graduating BSc Students

Welcome Christian Gould

We would like to extend a warm welcome to [Mr Christian Gould](#). Christian joined the Department in June as Co-ordinator of the MSc Occupational Health and the Master of Public Health (MPH). Christian completed his MSc in Psychology in 2016, his thesis investigated the perceived causal strength and controllability of behavioural risk factors of coronary heart disease. Whilst studying for his MSc Christian worked for The National Autistic Society in the U.K. as a learning mentor with students in London universities. Before completing his MSc, Christian was a primary school teacher.



Christian Gould

Summer Student

Ciara Griffin was awarded a HRB TMRN Summer Student Scholarship and is working in the department this June and July. The purpose of the student scholarships is to encourage an interest in methodology research and to provide opportunities to become familiar with research techniques. Ciara is assisting with core outcome set research being conducted by the project lead, [Dr Karen Matvienko-Sikar](#).



Ciara Griffin

RECENT PUBLICATIONS

Arensman, A (2017) [Suicide prevention in an international context: Progress and challenges. Crisis: The Journal of Crisis Intervention and Suicide Prevention](#), Vol 38(1), 2017, 1-6

Sinnott C, Byrne M, Bradley CP. (2017) [Improving medication management for patients with multimorbidity in primary care: a qualitative feasibility study of the MY COMRADE implementation intervention.](#) Pilot and Feasibility Studies 2017 3:14

Foley C, Droog E, Boyce M, Healy O, Browne JP. [Patient experience of different regional models of urgent and emergency care: A cross-sectional survey study.](#) BMJ Open 2017;7:e013339

Matvienko-Sikar, K., Murphy, G., & Murphy, G. (2017) ['The role of prenatal, obstetric, and post-partum factors in the parenting stress of mothers and fathers of 9-month old infants'.](#) Journal of Psychosomatic Obstetrics and Gynaecology

Spillane A, Larkin C, Corcoran P, Matvienko-Sikar K, Arensman El. [What are the physical and psychological health effects of suicide bereavement on family members? Protocol for an observational and interview mixed-methods study in Ireland.](#) BMJ Open 2017;7:e014707. doi:10.1136/bmjopen-2016-014707

[Smoking prevalence and attributable disease burden in 195 countries and territories, 1990–2015: a systematic analysis from the Global Burden of Disease Study](#) 2015, The Lancet, Volume 389, Issue 10082, 2017, Pages 1885-1906

[Caraher M, Perry I. Sugar, salt and the limits of self-regulation.](#) BMJ 2017;357:j1709 doi: 10.1136/bmj.j1709

Visit the department website for a full list of [publications](#)

Follow Us

Come join the conversation on Facebook and Twitter



Two Minute Magic

The department was well represented at the recent Faculty of Public Health Medicine Summer Scientific meeting held in the Royal College of Physician of Ireland in May. [Dr Eve Griffin](#) from the National Suicide Research Foundation presented her findings on 'Area-level variation in the incidence of hospital-treated self-harm in Northern Ireland'. [Mr Barrie Tyner](#) delivered a Two Minute Magic presentation on 'Early-life antibiotics exposures and the associated risk of developing obesity and overweight at age 5'. [Dr Martin Davoren](#) presented on his findings for 'Support of evidence-based alcohol policy: Results from the community action on alcohol pilot project'. Well done to the faculties Dean, [Dr Elizabeth Keane](#) and all involved.



From l-r, Mr Barrie Tyner, Dr Eve Griffin and Dr Martin Davoren

Annual Association for the Study of Obesity

The Association for the Study of Obesity on the island of Ireland (ASOI) Annual Conference was held on May 4th and 5th in UCD. The conference focused on childhood obesity prevention and treatment, and included 15 keynote speakers from 7 countries. The conference was organised and held in collaboration with the ESPRIT research team, through an Irish Research Council grant awarded to [Dr Karen Matvienko-Sikar](#). Karen also presented research on the development of an infant feeding intervention for preventing childhood obesity. [Prof Ivan Perry](#) Chaired one of the morning sessions. Videos of some of the keynote speakers can be accessed [here](#).

World Anti-Bullying Forum

Ms Rebecca Dennehy received a College of Medicine and Health Travel Bursary to travel to the inaugural World Anti-Bullying Forum (WABF) in unseasonably snowy Stockholm in May. The conference was opened by Prince Carl and Princess Sofia of Sweden and was well attended by international researchers and practitioners. The focus of the conference was on bullying, harassment, discrimination and violence among children and young people. The perspective of young people is largely absent from current efforts to understand and address cyberbullying, particularly in the Irish context. Rebecca's research aims to give voice to young people and ensure that they are listened to. Rebecca gave two oral presentations at the conference firstly describing her participatory approach to designing and conducting research to conceptualise cyberbullying with post-primary school students and secondly presenting findings from this study.



Rebecca Dennehy at WABF 2017

Presentations in Porto

The Department was well represented at the 24th European Congress on Obesity in Porto, Portugal, May 17-20th. [Ms Emily Kelleher](#) attended to present her research on childhood obesity treatment. During the conference Emily gave an oral presentation on user and provider perspectives of the referral process to a family-focused, multicomponent childhood weight management programme delivered in the community setting. This research contributes to a limited evidence base, an understanding of staff and parent's experiences of the referral process and also identifies the factors motivating families to enroll and complete treatment. Findings may help enhance programme uptake and completion rates. Emily also had two posters entitled "Implementation of a community-based, multi-disciplinary, family-focused childhood weight management programme: Barriers and facilitators for success" and "If you build it will they come? An analysis of the recruitment of families to a community-based, multi-disciplinary childhood weight-management programme". [Dr Karen Matvienko-Sikar](#) also presented her research on the effects of infant feeding interventions on parent feeding practices. During the poster sessions [Dr Zubair Kabir](#) showcased his work with PhD student Shelly Chakraborty on "The Impact of High BMI on Non-Communicable Diseases in the European Union" and [Dr Janas Harrington](#) presented her research on sugar sweetened beverage intake.

Canadian Connections

The Department of Epidemiology and Public Health has been well represented across the Atlantic in Canada recently. Third year [SPHeRE](#) (Structured Population and Health-services Research Education) Scholars [Kieran Walsh](#) and [Rebecca Dennehy](#) completed their international work placements in Ottawa and Toronto respectively and [Dr Martin Davoren](#) and [Dr Sheena McHugh](#) presented at the third bi-annual Global Implementation Conference in Toronto. [Professor Ivan Perry](#), [Dr Fiona Geaney](#) and [Dr Sarah Fitzgerald](#) made the long journey to Victoria to attend the Annual Meeting of the International Society of Behavioral Nutrition and Physical Activity (ISBNPA).

SPHeRE International Work Placements

[Kieran Walsh](#), completed his international work placement in [Ottawa Hospital Research Institute](#) (OHRI) in Canada in May. The placement was conducted under the supervision of the host investigator [Dr Justin Presseau](#), who is a Scientist with the Clinical Epidemiology Program. For his three-week placement, Kieran was able to meet with experts in the field of Implementation Science, Knowledge Translation and Behaviour Change such as Dr Andrea Patey, Professor Jamie Brehaut, Professor Jeremy Grimshaw and Dr Presseau to seek methodological and career advice. Kieran also presented his research to the wider research group at a local knowledge translation meeting. From these sessions, Kieran has received vital feedback on his research and recommendations for writing papers, targeting journals and collaborating. Kieran thoroughly enjoyed his time in Ottawa and is hopeful of a future collaboration with investigators in the OHRI. In May, Rebecca Dennehy completed her international work placement with renowned cyberbullying researcher [Professor Faye Mishna](#) at the [Factor-Inwentash Faculty of Social Work](#), University of Toronto (UofT). Professor Mishna's programme of research focuses on bullying, cyberbullying and cyber aggression. Over her two-week placement Rebecca was able to discuss conceptual and methodological issues with Professor Mishna and other experts in the area including Professor Mona Khoury-Kassabri a visiting scholar from Hebrew University, Jerusalem. Rebecca had the opportunity to present her research to staff and students from the faculty and a rich and engaging discussion ensued. Rebecca enjoyed a positive and rewarding work placement and was made to feel very welcome. She looks forward to ongoing collaboration with those that she worked with at UofT.



From l-r, Mr Kieran Walsh (UCC), Dr Justin Presseau (OHRI), Dr Elaine Toomey (NUIG)

Global Implementation Conference Toronto

[Dr Sheena Mc Hugh](#) and [Dr Martin Davoren](#) recently presented at the third bi-annual Global Implementation Conference in Toronto, Canada. Sheena presented e-posters of her research on the evaluation of an integrated falls pathway. She also gave an oral presentation of the co-creation project to develop process indicators and an audit and feedback loop, being undertaken between the ESPRIT Research Group, the National Clinical Care Programme for Diabetes and Clinical Nurse Specialists in Ireland. Martin completed an ignite presentation focusing on his work on the Community Action on Alcohol Pilot Project.



Dr Martin Davoren and Dr Sheena McHugh in Toronto

ISBNPA Annual Meeting Victoria

[Dr Sarah Fitzgerald](#), [Dr Fiona Geaney](#) and Department Head [Professor Ivan Perry](#) attended the ISBNPA Annual meeting in June. Sarah presented an economic evaluation of the Food Choice at Work Trial where the cost effectiveness of dietary interventions were assessed. Professor Perry acted as the discussant for a symposium entitled 'Workplace health programmes: Lessons learned from design and evaluation to practical implementation of dietary and physical activity interventions'. Fiona delivered a presentation on Food Choice at Work alongside international researchers Professor Jan Seghers from the University of Leuven, Professor Elizabeth Ablah from the University of Kansas and Dr Jennifer Coffeng from the Institute for Health and Care Research, Amsterdam.



From l-r, Prof Perry and Dr Geaney with fellow presenters

The TRUST Thyroid Trial

The Thyroid Hormone Replacement for Subclinical Hypo-thyroidism Trial ([TRUST](#)) was a multi-centre, double blind, placebo controlled, phase III clinical trial testing the efficacy of thyroxine replacement in subclinical hypothyroidism in older community dwelling adults. [Professor Patricia Kearney](#) is the lead Principal Investigator for TRUST in Ireland. The trial completed recruitment in November 2016 with a total of 115 participants in Ireland.

Professor Kearney organised a number of dissemination events to thank those who took part in the trial and present them with the results. These events included plaque presentations to study labs and satellite sites, GP information events and patient information events. Three unique patient information events were held in Cork, Waterford and Limerick. Attendees included participants, family members/friends, lab representatives, study site representatives and members of the TRUST team. Speakers included Professor Patricia Kearney and Mr Eamon Kearney (TRUST participant). The events were hugely successful and appreciated by all in attendance. The final results of the study were published in the New England Journal of Medicine in April 2017. Please find a link to the article [here](#).



From l-r, Professor Patricia Kearney and Eithne Bardon, Chief Medical Scientist, Mercy University

Dr McHugh Receives Fulbright Award

Congratulations to [Dr Sheena McHugh](#) who has been awarded a prestigious Fulbright Award to carry out implementation science research in the United States. Sheena has received one of five Fulbright-HRB Health Impact Awards. This is the first year that the HRB have co-sponsored a Fulbright scholarship. Sheena will spend six months at the Gillings School of Public Health at the University of North Carolina working with [Professor Byron Powell](#) from Department of Health Policy and Management. Her research will examine the transferability of implementation strategies between health systems. This year the Fulbright Program celebrates 60 years of exchange between Ireland and the US. The Program is unique in its equal emphasis on cultural as well as educational exchange. The next round of applications for the Fulbright Irish Awards will open on Thursday, August 31st, 2017. Interested applicants should visit www.fulbright.ie for more information.



UCC Fulbright Awardees from l-r, Aaron Barker, Sheena McHugh and Colin Bradley

Annual Alcohol Epidemiology Symposium of the Kettil Bruun Society

The 43rd Annual Alcohol Epidemiology Symposium of the [Kettil Bruun Society](#) (KBS) took place in Sheffield, UK this year from 5th to 9th June. Attending this year's international symposium were [Dr Martin Davoren](#), post-doctoral researcher, and [Ms Susan Calnan](#), PhD research candidate. The KBS symposium provides a forum for researchers involved in studies on alcohol to exchange ideas about their ongoing research, and attracts leading researchers from around the world. The scope of the symposium includes studies on determinants and consequences of alcohol consumption, drinking culture and drinking patterns, and social and institutional responses to drinking related harms, prevention and care. At this year's conference, Martin presented findings from his research on the Community Action on Alcohol Pilot Project, which involved a household survey in three pilot sites in southern Ireland and found that over half of Irish adults are drinking at hazardous levels. Susan presented her findings on a critical discourse analysis regarding Ireland's proposed Public Health (Alcohol) Bill, which examined the divergent discourses that have emerged from the debate over the proposed alcohol Bill.

Community Engaged Participatory Research and the Discipline of Public Health

There is a growing interest and practice in the area of Community Based Participatory Research (CBPR) and Teaching within the Department. On May 17th, Dr Martin Galvin, Research Support Officer with UCC's [Community Academic Research Links \(CARL\)](#) initiative, gave a seminar in the Department on '[Strengthening the Civic Mission of Higher Education: the role of Community Based Scholarship in Medicine and Health](#)'. He informed the audience of '[Campus Engage](#)' which is a national initiative to support this area of work and highlighted how UCC is well positioned to be a leader in this area with the already well-established CARL initiative and a significant number of committed staff across a wide range of disciplines. In a follow-up meeting with [Prof Ivan Perry](#) it was agreed that Public Health is a key discipline in which community engaged research and teaching partnerships can be developed. Lecturers [Ms Mary Cronin](#) and [Dr Zubair Kabir](#) have a particular interest in promoting this type of work and welcome interest from others who also wish to engage.



Traveller Women's Food Choice and Physical Activity Study

The '[Traveller Women's Food Choice and Physical Activity Study](#)' is an example of CBPR undertaken by the Department. The Southern Traveller Health Network (STHN), a Traveller-led organisation, sought to undertake research on Traveller women's difficulties in losing weight and changing food and activity behaviours. A research partnership was created between Mary Cronin and Jennifer Russell of this Department and the STHN, with the support of the HSE South Traveller Health Unit and the Health Promotion and Improvement Department. The study found that Traveller women's food choices and physical activity were strongly influenced by their experiences of chronic stress arising from racial discrimination and social exclusion, poor educational attainment, as well as some cultural factors such as a history of food insecurity and the roles of Traveller women. The findings are being shared with the Traveller community via a series of workshops and a video is in preparation. Further dissemination is planned within UCC, via the HSE at regional and national levels and through international academic media. A report on the study was published by the Department in October 2016 and can be found [here](#).

A Participatory Approach to Cyberbullying Research

Rebecca Dennehy's PhD project, CY:BER (Cyberbullying and Young People: Behaviours, Experiences, Resolutions), also uses a participatory approach to research. Supervised by [Professor Ella Arensman](#) of the [National Suicide Research Foundation](#), and [Ms Mary Cronin](#) of this Department, Rebecca collaborated with a Youth Advisory Group, comprising 16 Transition Year students from 4 schools, in the design and conduct of a study to better understand cyberbullying from the perspective of post-primary school students. The project was welcomed by local schools and was hugely supported by local Youth Worker Ross Bonner from [CDYS](#) Midleton. CDYS provided a safe, youth friendly space at My Place Youth and Community Centre, Midleton for the Youth Advisory Group to meet with researchers on 5 occasions over the school year 2016/2017. The Youth Advisory Group contributed an invaluable, contemporary perspective to the research process that would not otherwise have been accessible to the research team. Youth Advisors were awarded a Certificate of Participation from the National Suicide Research Foundation and the Department of Epidemiology and Public Health for their contribution to the project.



From l-r, CY:BER Youth Advisors pictured with their Certificates of Participation, Rebecca Dennehy and CDYS Youth Worker Ross Bonner

Midland Structured Diabetes Care Programme

Minister for Health, Simon Harris TD, officially launched the 2016 Audit Report of the Midland Diabetes Structured Care Programme (MDSCP) on July 10th at the Irish College of General Practitioners. The report was prepared in collaboration with researchers from the Department, Ms Fiona Riordan, Dr Sheena McHugh and Professor Patricia Kearney. The MDSCP is the longest running structured primary care-led diabetes programme in Ireland and was first established in 1997/1998. As of 2016, there are 3,797 patients and 30 GP practices across Longford, Westmeath, Laois and Offaly, enrolled in the programme. Practices follow a structured approach encompassing registration and recall, regular review visits, with provision of professional education, remuneration, and enhanced access to multidisciplinary specialists (e.g. clinical nurse specialists, dietetics, and podiatry). Findings from the report showed there have been significant improvements since 1998 in the quality of care delivered to patients enrolled in the programme. Over 97% of the 1190 patients audited had key processes of care performed, including measurement of blood glucose levels, blood pressure, cholesterol, triglycerides, and creatinine. Most patients with type 2 diabetes achieved targets in line with clinical guidelines, and the proportion of patients meeting blood pressure and lipid targets had improved significantly since 1998. A copy of the report can be accessed [here](#).



29th World Congress of the International Association for Suicide Prevention

SPHeRE Scholar, [Ms Ailbhe Spillane](#), received a travel bursary from the College of Medicine and Health to attend the 29th World Congress of the International Association for Suicide Prevention (IASP) in Kuching, Malaysia in July. The theme for the conference was "Preventing Suicide: A Global Commitment, from Communities to Continents". The conference was well attended by delegates, both nationally and internationally, with expertise in the area of suicide and self-harm. Ailbhe gave two oral presentations on her qualitative research into the overall impact of suicide bereavement on family members and on her systematic review examining physical and psychosomatic health outcomes following suicide bereavement. [Professor Ella Arensman](#) of the National Suicide Research Foundation gave a number of workshop and plenary presentations, in addition to her other duties as President of the IASP.



Ailbhe Spillane and fellow delegates at the 29th World Congress of the IASP

Bugs and Drugs

The 6th annual [Safe Patient Care Conference](#) will be held on the 8th of September in conjunction with the Cork / Kerry Infection Prevention and Control Committee, HSE South. The focus of the conference this year is Multidrug Resistant Organisms and Antimicrobial Resistance with the theme of "Bugs and Drugs". A wide variety of nationally recognised speakers will focus on all aspects of prevention and management of this ongoing challenge. Attendance is free and refreshments will be provided. If you would like more information please contact the conference co-ordinators Maura Smiddy m.smiddy@ucc.ie or Fiona Barry fionabarry@ucc.ie.

Diabetes in Primary Care Conference

The [10th annual Diabetes in Primary Care Conference](#) will be held in Cork on 20th of September, this conference has grown from strength to strength with an attendance of 98 at the first conference back in 2008, to an attendance of 250 booked for the last 6 years. The 2017 conference theme is "The Heroism of Incremental Care". The aim of the conference is that all participants will acquire skills and knowledge that can be used in improving the care that they provide to patients with diabetes. Further information is available [here](#).

Graduation Celebrations

The sun shone for the Summer Conferings at University College Cork in June. Friends, loved ones and colleagues attended to congratulate our outstanding PhD graduates.

[Dr Sarah Fitzgerald](#) graduated after defending her PhD entitled "*Evaluation of Complex Workplace Interventions*". Sarah conducted both a process evaluation and a multifaceted economic evaluation of the Food Choice at Work (FCW) Study. The FCW study was a cluster controlled trial of complex workplace dietary interventions, which assessed the comparative effectiveness of nutrition education and system-level dietary modification interventions both alone and in combination versus a control workplace.

Congratulations are in order for [Dr Jamie Madden](#) who successfully defended his PhD which involved the modelling of circadian blood pressure patterns where the focus was on capturing measures of short-term blood pressure variability. The association between these measures of variability and the presence of subclinical target organ damage was subsequently explored. His supervisory team included [Dr Tony Fitzgerald](#), [Professor Patricia Kearney](#) and [Dr Xia Li](#)."



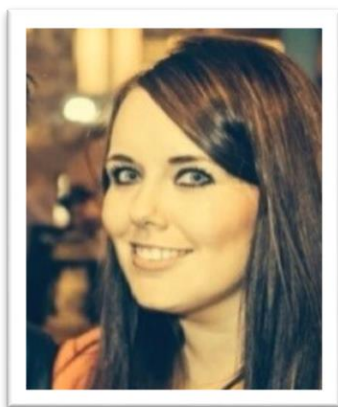
From l-r, Dr Sarah Fitzgerald, Dr Jamie Madden, Ms Vicky Murphy, Dr Sheena McHugh, Dr Dervla Hogan, Ms Ber Madden and Dr Tony Fitzgerald

[Dr Seán Millar](#) successfully defended his PhD thesis entitled "*A Comparative Evaluation of Surrogate Measures of Adiposity as Indicators of Cardiometabolic Disease*". Seán's PhD research, which was supervised by [Dr Catherine Phillips](#) and co-supervised by [Professor Ivan Perry](#), examined anthropometric measures and their utility for assessing cardiometabolic risk and discriminating patients with type 2 diabetes within clinical practice.

Our dedicated Department Manager, [Dr Dervla Hogan](#), successfully defended her PhD entitled "*Musculoskeletal symptoms in self-employed versus employed therapists: the role of training and social support*". Dervla's PhD was in the area of Occupational Health and focused on work-related musculoskeletal disorders (WRMSDs) in hand intensive healthcare occupations. The data which was used within this PhD comes from the HITS Study which was funded by the Institution of Occupational Safety & Health (IOSH).

We wish all our graduates the very best in their future careers!

MEET...



Dr Sarah Fitzgerald

Dr Sarah Fitzgerald

Sarah is the Research Lead with Food Choice at Work Ltd, which is a commercial spin-out from the Department of Epidemiology and Public Health and the HRB Centre for Health and Diet Research. Sarah completed her PhD in 2016 as part of the HRB PhD Scholars Programme, a four year structured PhD programme. Her thesis was entitled "*Evaluation of Complex Workplace Dietary Interventions*" and consisted of a process evaluation and a comprehensive economic evaluation of the Food Choice at Work Study (FCW). The FCW study was a cluster controlled trial of complex workplace dietary interventions that assessed the comparative effectiveness of environmental dietary modification and nutrition education interventions, both alone and in combination versus a control workplace. Due to the significance of the trial findings and also due to commercial interest, FCW went through a commercial spin-out process with UCC and now operates as a leading edge healthy eating management system for employees. Prior to this, Sarah completed the BSc in Public Health and Health Promotion in the Department in 2009 and then went on to complete the Master of Public Health in 2010 where she specialised in Health Protection.

Sarah's research interests include public health interventions, process evaluation, implementation of interventions and economic evaluation of public health interventions.

Did you know?

Sarah comes from a family of golfing fanatics and used to play herself when she was younger. Sarah has recently bowed to the pressure and taken back up the game.

UPCOMING EVENTS & TRAINING

July

[ICOPH](#): 3rd International Conference on Public Health, 27-29th July, Kuala Lumpur, Malaysia

August

[IEA World Congress of Epidemiology](#), 19-22nd August 2017, Saitama, Japan

September

[Society for Social Medicine Annual Meeting](#), 6-8th September, Manchester, UK

[Safe Patient Care Conference](#), 8th September, Cork, Ireland

[UKCO2017](#) - Obesity, Health and Social Inequalities, 7th September, Wales, UK

[10th Annual Diabetes in Primary Care Conference](#), 20th September, Cork, Ireland

[FFC's 22nd International Conference on Functional Foods and Chronic Diseases](#), 22-23rd September, Boston, MA, USA

[The Methods of Translating and Disseminating Epidemiology into Public Health](#), 24- 26th September, New Orleans, Louisiana

[International Association for Youth Mental Health](#) 24th – 26th September, Dublin Ireland

[International Society for Environmental Epidemiology](#): ISEE 2017, 24-28th September, Sydney, Australia

October

[IUNS 21st International Congress of Nutrition \(ICN\)](#), 15-20th October, Buenos Aires, Argentina

November

[10th European Public Health Conference - Sustaining resilient and](#)

[healthy communities](#), 1-4th November, Stockholm, Sweden

[International Bullying Prevention Association](#) 5-7th November. Nashville

[European Scientific Conference on Applied Infectious Disease Epidemiology](#) 6-8th November, Stockholm

[Obesity and Reproduction: The cradle of the Epidemic](#), 9 – 10th November, Leuven, Belgium

[27th European Childhood Obesity Group Annual Congress](#), 15-17th November, Rome, Italy

[6th Childrens Research Network for Ireland and Northern Ireland Conference](#) 29th & 30th November, Dublin

April

[Society for Behavioural Medicine 39th Annual Scientific Meeting and Sessions](#) 11th -14th April 2018, New Orleans

Ongoing

[Stata courses](#)

[Stata training](#)

[Qualitative Research Methods](#)

CONTACT US:

Epidemiology & Public Health,
Western Gateway Building, Western
Road, University College Cork, Cork,

TEL: +353 (0)21 420 5500

EMAIL: EPIDEMIOLOGY@UCC.IE

